

CORNER RECORD

Document Number 2052-V

City of _____

County of MERCED, California

Brief Legal Description CENTERLINE MONUMENT ON SOUTH END OF CURVE FOR 265.58' LONG CURVE. SEE 22 R.S. 44.



7
13

CORNER TYPE

Government Corner Control
Meander Property
Rancho Other
Date of Survey MARCH 12, 2013

COORDINATES (Optional)

N. _____
E. _____
Zone _____ NAD27 NAD83
NAD83 Epoch _____
Elev. _____
Vert. Datum: NGVD29 NAVD88
Meas. Units: Metric Imperial

Corner - Left as found Found and tagged Established Reestablished Rebuilt

Identification and type of corner found: Evidence used to identify or procedure used to establish or reestablish the corner:
FOUND 3/4" IRON PIPE TAGGED "MERCED SURVEY" IN MONUMENT WELL AT THE SOUTH END OF CURVE FOR A CURVE IS 265.58' LONG, SEE 22 R.S. 44.
MONUMENT TIED OUT PRIOR TO OVERLAY OF GURR ROAD.

A description of the physical condition of the monument as found and as set or reset: SEE PAGE 2

SURVEYOR'S STATEMENT

This Corner Record was prepared by me or under my direction in conformance with the Land Surveyor's Act on May 5, 2016

Signed [Signature] P.L.S or B.C.E. No. 4895



COUNTY SURVEYOR'S STATEMENT

This Corner Record was received May 5, 2016

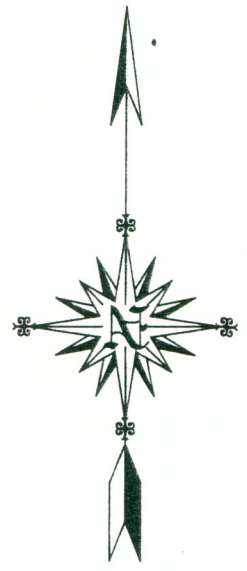
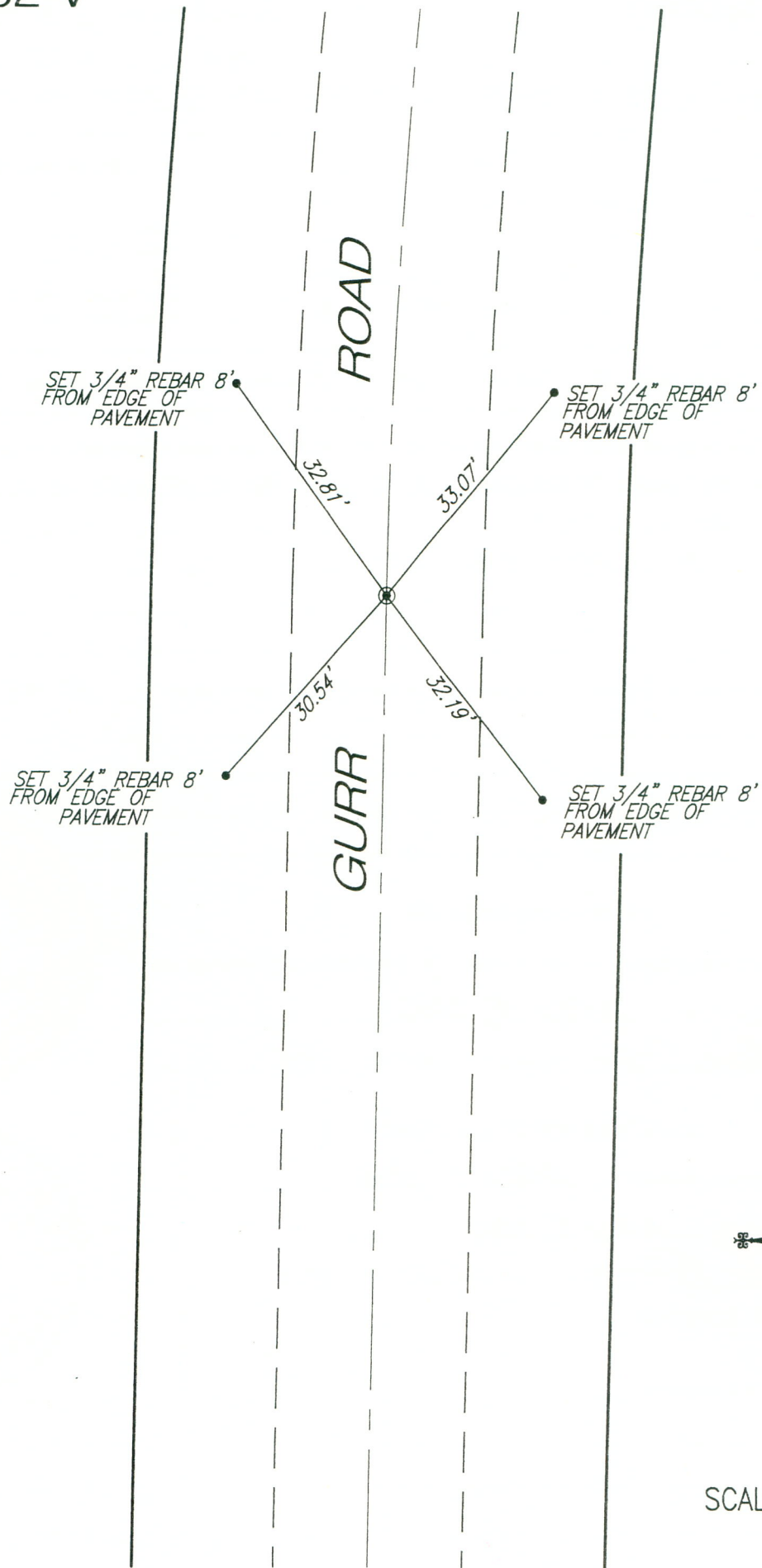
and examined and filed May 5, 2016

Signed [Signature] P.L.S or B.C.E. No. 4895

Title COUNTY SURVEYOR



County Surveyor's Comment _____



SCALE: 1" = 20'