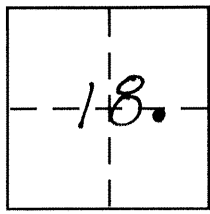


CORNER RECORD

Document Number 2041-A

City of _____ County of MERCED, California

Brief Legal Description N.W. CORNER Lot 38, 3 O.P. 60, M.C.R.



CORNER TYPE

- Government Corner Control
- Meander Property
- Rancho Other
- Date of Survey 3-12-07

COORDINATES (Optional)

N. _____
 E. _____
 Zone _____ NAD27 NAD83
 NAD83 Epoch _____
 Elev. _____
 Vert. Datum: NGVD29 NAVD88
 Meas. Units: Metric Imperial

Corner - Left as found Found and tagged Established Reestablished Rebuilt

Identification and type of corner found: Evidence used to identify or procedure used to establish or reestablish the corner:
FOUND 4x4 REDWOOD AS WE SEARCHED FOR THE N.W. CORNER OF LOT 38, 3 O.P. 60, M.C.R.

A description of the physical condition of the monument as found and as set or reset: SET 3/4" IRON PIPE WITH L.S. 7621 TAG IN CENTER OF FOUND REDWOOD.

SURVEYOR'S STATEMENT

This Corner Record was prepared by me or under my direction in conformance with the Land Surveyor's Act on APRIL 19, 2007
 Signed [Signature] P.L.S or R.G.E.-No. 7621

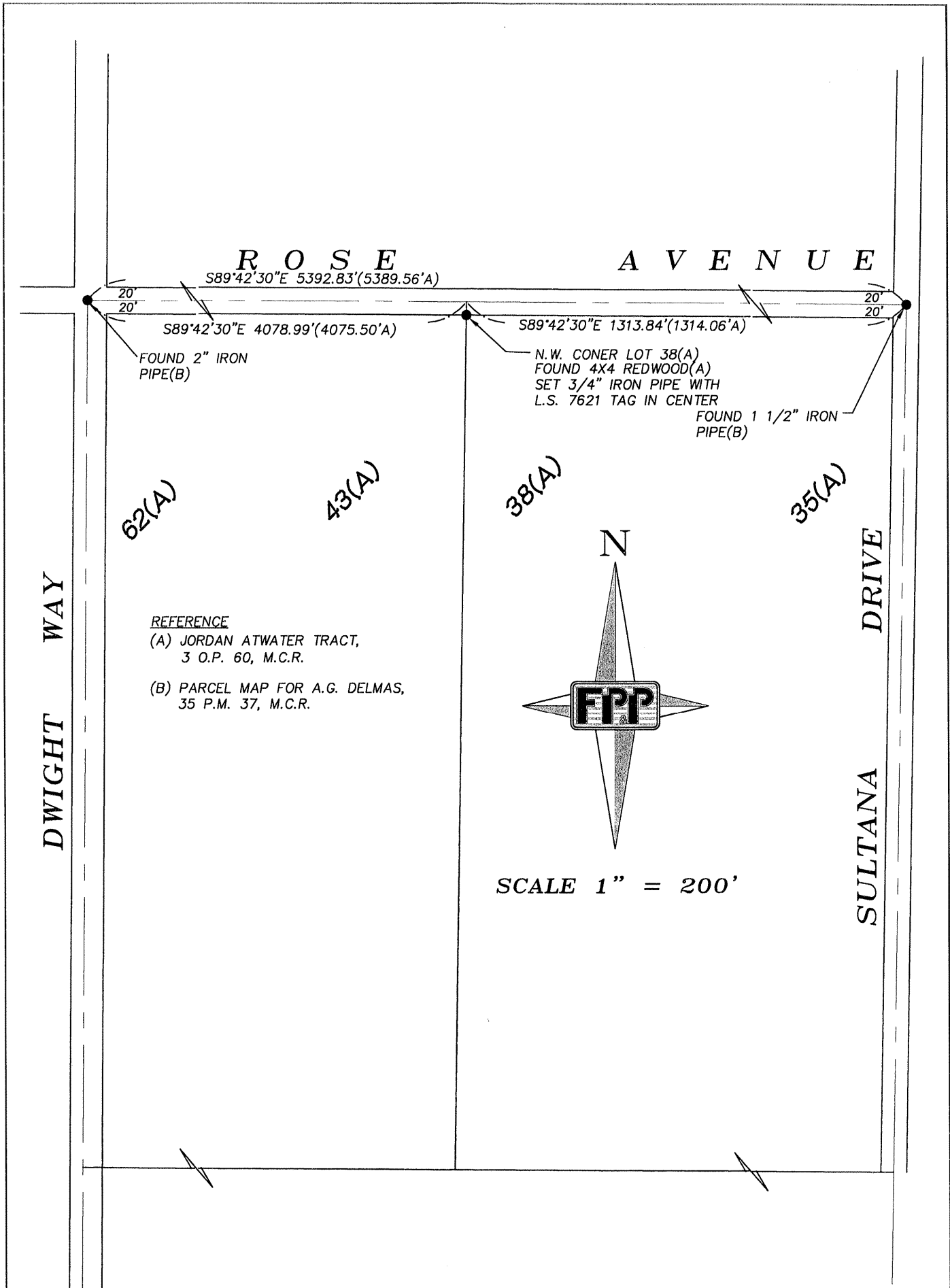


COUNTY SURVEYOR'S STATEMENT

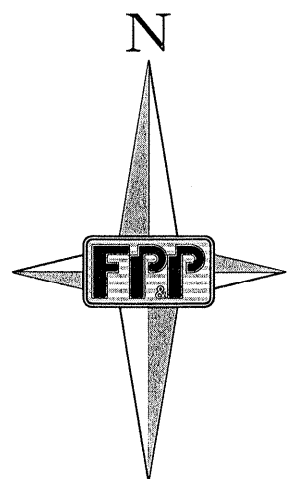
This Corner Record was received April 20, 2007
 and examined and filed May 2, 2007
 Signed [Signature] P.L.S or R.G.E. No. 4895
 Title Dep. County Surveyor



County Surveyor's Comment _____



REFERENCE
 (A) JORDAN ATWATER TRACT,
 3 O.P. 60, M.C.R.
 (B) PARCEL MAP FOR A.G. DELMAS,
 35 P.M. 37, M.C.R.



SCALE 1" = 200'