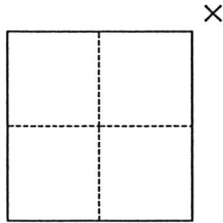


CORNER RECORD

Agency Index 2033
Document Number _____

City of _____ County of Merced, California
Brief Legal Description Northeast Corner Section 27, T. 6 S., R. 10 E., M. D. B. & M.



CORNER TYPE

- Government Corner
- Meander
- Rancho
- Control
- Property
- Other

Date of Survey September 3, 2019

COORDINATES (Optional)

N. _____ E. _____
 Elevation _____
 Units Metric U.S. Survey Foot
 Horizontal Datum _____
 Zone _____ Epoch Date _____
 Vertical Datum _____
 Complies with Public Resources Code §§8801-8819
 Complies with Public Resources Code §§8890-8902

PLS Act Ref.: 8765(d) 8771 8773 Other:

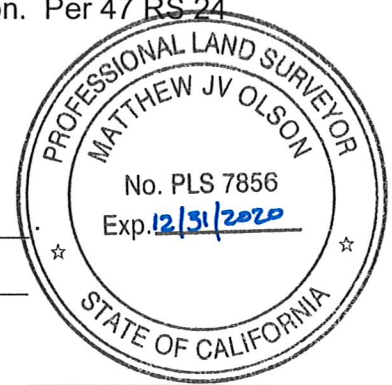
Corner/Monument: Left as found Established Rebuilt Pre-Construction
 Found and tagged Reestablished Referenced Post-Construction

Narrative of corner identified and monument as found, set, reset, replaced, or removed:
 See sheet #2 for description(s):

Found 2 1/2 in outside diameter iron pipe with tag (unreadable) in redwood plug set in monument well. Found 1 in iron pipes with yellow 'CALIF DOT' plugs on each corner. Tied 1 iron pipe on the NW and NE corners and 2 iron pipes on the SE and SW corner of the intersection. Per 47 RS 24

SURVEYOR'S STATEMENT

This Corner Record was prepared by me or under my direction in conformance with
 the Professional Land Surveyors' Act on November 18, 2019
 Signed [Signature] P.L.S. or R.C.E. No. PLS 7856

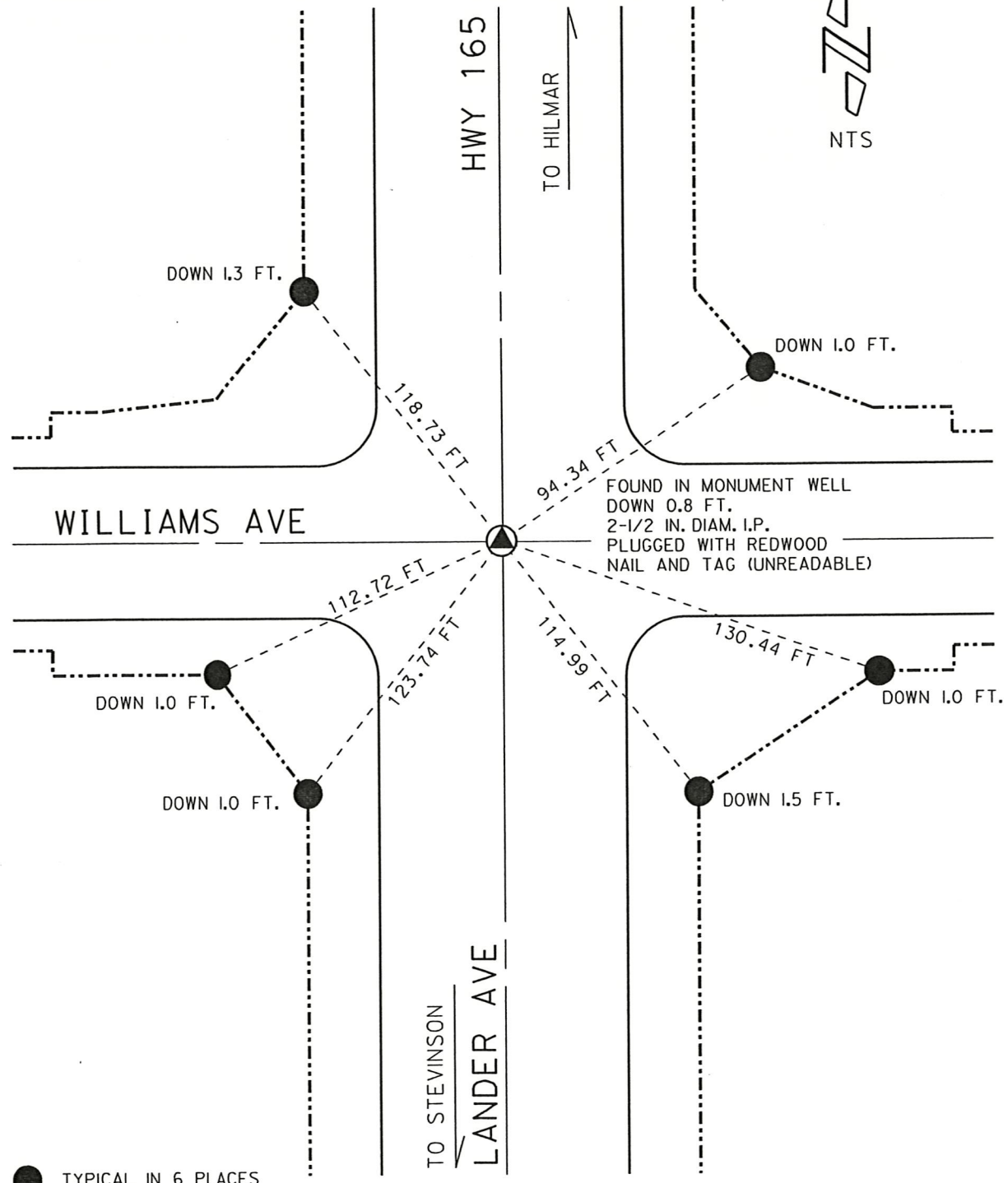


COUNTY SURVEYOR'S STATEMENT

This Corner Record was received DECEMBER 13, 2019
 and examined and filed DECEMBER 16, 2019
 Signed [Signature] P.L.S. or R.C.E. No. 8664
 Title COUNTY SURVEYOR



County Surveyor's Comment



FOUND IN MONUMENT WELL
 DOWN 0.8 FT.
 2-1/2 IN. DIAM. I.P.
 PLUGGED WITH REDWOOD
 NAIL AND TAG (UNREADABLE)

● TYPICAL IN 6 PLACES
 FOUND 1IN. IP WITH
 YELLOW PLASTIC PLUG
 STAMPED (CALIF. DOT)
 REF. R/S VOL 47 PG 24

DATE OF SURVEY: 09/03/2019