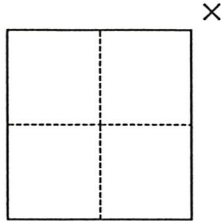


CORNER RECORD

Agency Index 2032
Document Number _____

City of _____ County of Merced, California
Brief Legal Description Northeast Corner Section 15, T. 6 S., R. 10 E., M. D. B. & M.



CORNER TYPE

- Government Corner
- Meander
- Rancho
- Control
- Property
- Other

Date of Survey October 21, 2019

COORDINATES (Optional)

N. _____ E. _____
 Elevation _____
 Units Metric U.S. Survey Foot
 Horizontal Datum _____
 Zone _____ Epoch Date _____
 Vertical Datum _____
 Complies with Public Resources Code §§8801-8819
 Complies with Public Resources Code §§8890-8902

PLS Act Ref.: 8765(d) 8771 8773 Other:
 Corner/Monument: Left as found Established Rebuilt Pre-Construction
 Found and tagged Reestablished Referenced Post-Construction

Narrative of corner identified and monument as found, set, reset, replaced, or removed:
 See sheet #2 for description(s):

Found 1/2 in iron pipe in monument well. Found 3/4 in brass washer stamped 'C.T. TIE POINT' set in concrete electric vault on the southeast corner. Set 1 1/2 in brass washers stamped 'CALTRANS' in utility poles on each corner. Per 50 RS 47.

SURVEYOR'S STATEMENT

This Corner Record was prepared by me or under my direction in conformance with
 the Professional Land Surveyors' Act on November 18, 2019
 Signed [Signature] P.L.S. or R.C.E. No. PLS 7856

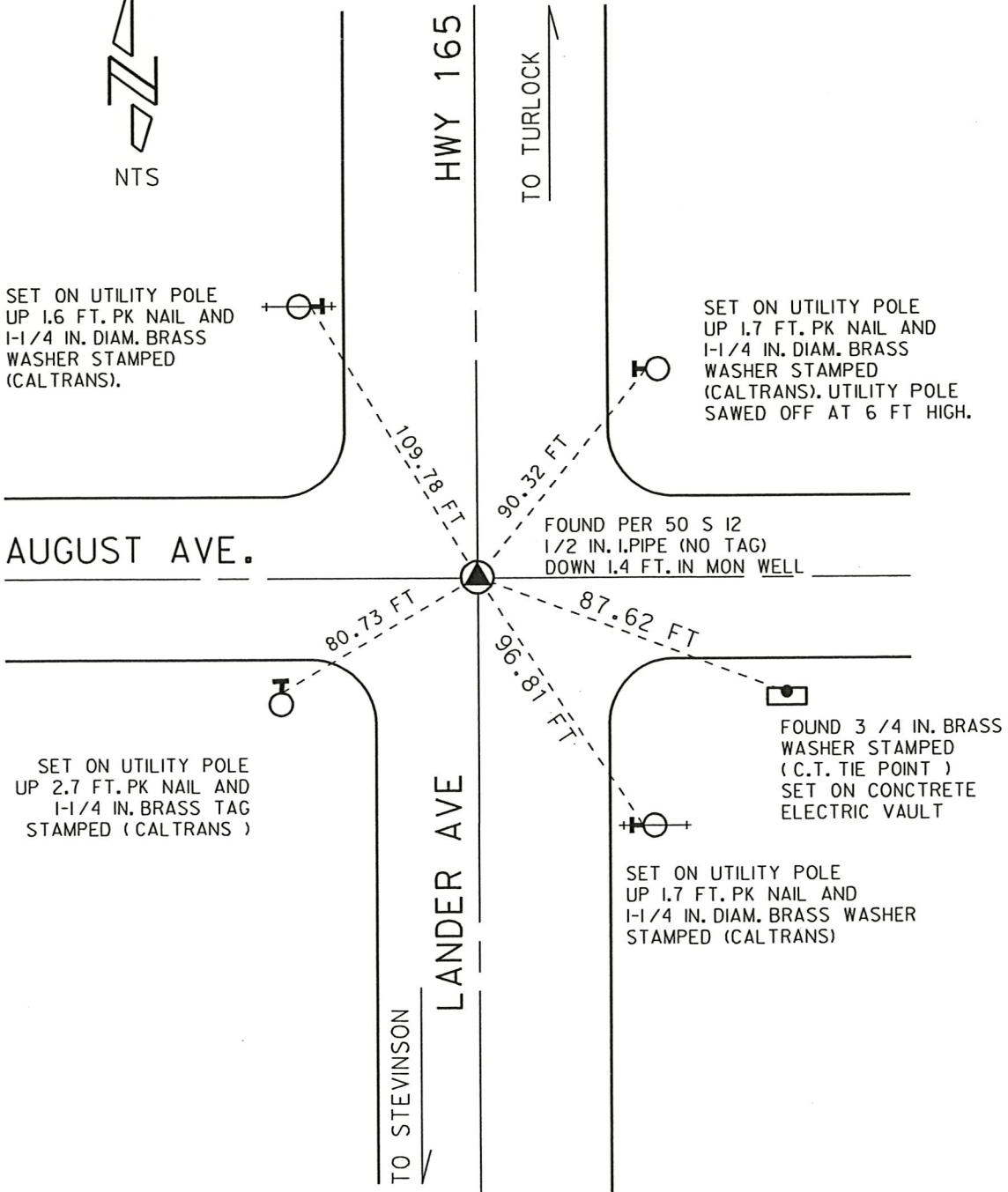


COUNTY SURVEYOR'S STATEMENT

This Corner Record was received DECEMBER 13, 2019
 and examined and filed DECEMBER 16, 2019
 Signed [Signature] P.L.S. or R.C.E. No. 8664
 Title COUNTY SURVEYOR



County Surveyor's Comment
SEE 50 PM 12.



DATE OF SURVEY: 10/21/2019