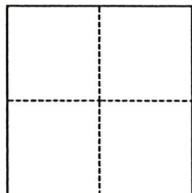


# CORNER RECORD

Agency Index 2032-LL  
Document Number \_\_\_\_\_

City of Hilmar County of Merced, California  
Brief Legal Description Lander and 2nd, 42 PM 15, section 14|15, T 6 S., R. 10 N., M. D. B. & M.



### CORNER TYPE

- Government Corner
- Meander
- Rancho
- Control
- Property
- Other

Date of Survey September 11, 2019

### COORDINATES (Optional)

N. \_\_\_\_\_ E. \_\_\_\_\_  
 Elevation \_\_\_\_\_  
 Units  Metric  U.S. Survey Foot  
 Horizontal Datum \_\_\_\_\_  
 Zone \_\_\_\_\_ Epoch Date \_\_\_\_\_  
 Vertical Datum \_\_\_\_\_  
 Complies with Public Resources Code §§8801-8819  
 Complies with Public Resources Code §§8890-8902

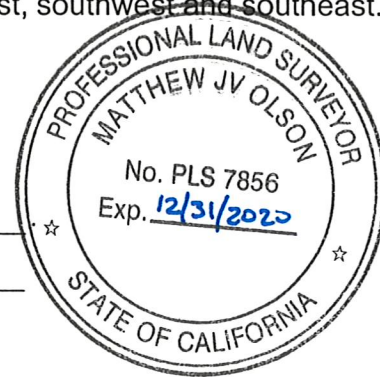
PLS Act Ref.:  8765(d)  8771  8773  Other:  
 Corner/Monument:  Left as found  Established  Rebuilt  Pre-Construction  
 Found and tagged  Reestablished  Referenced  Post-Construction

Narrative of corner identified and monument as found, set, reset, replaced, or removed:  
 See sheet #2 for description(s):

Found 1 1/2 in iron pipe with wood plug and nail hole in monument well. Placed a brass tag stamped 'CAL TRANS' in the hole in the wood plug. Tied to monument to the east in in a monument well and set PK nails with brass 'CALTRANS' washers on utility poles to the northeast, southwest and southeast.

### SURVEYOR'S STATEMENT

This Corner Record was prepared by me or under my direction in conformance with  
 the Professional Land Surveyors' Act on November 18, 2019  
 Signed [Signature] P.L.S. or R.C.E. No. 7856

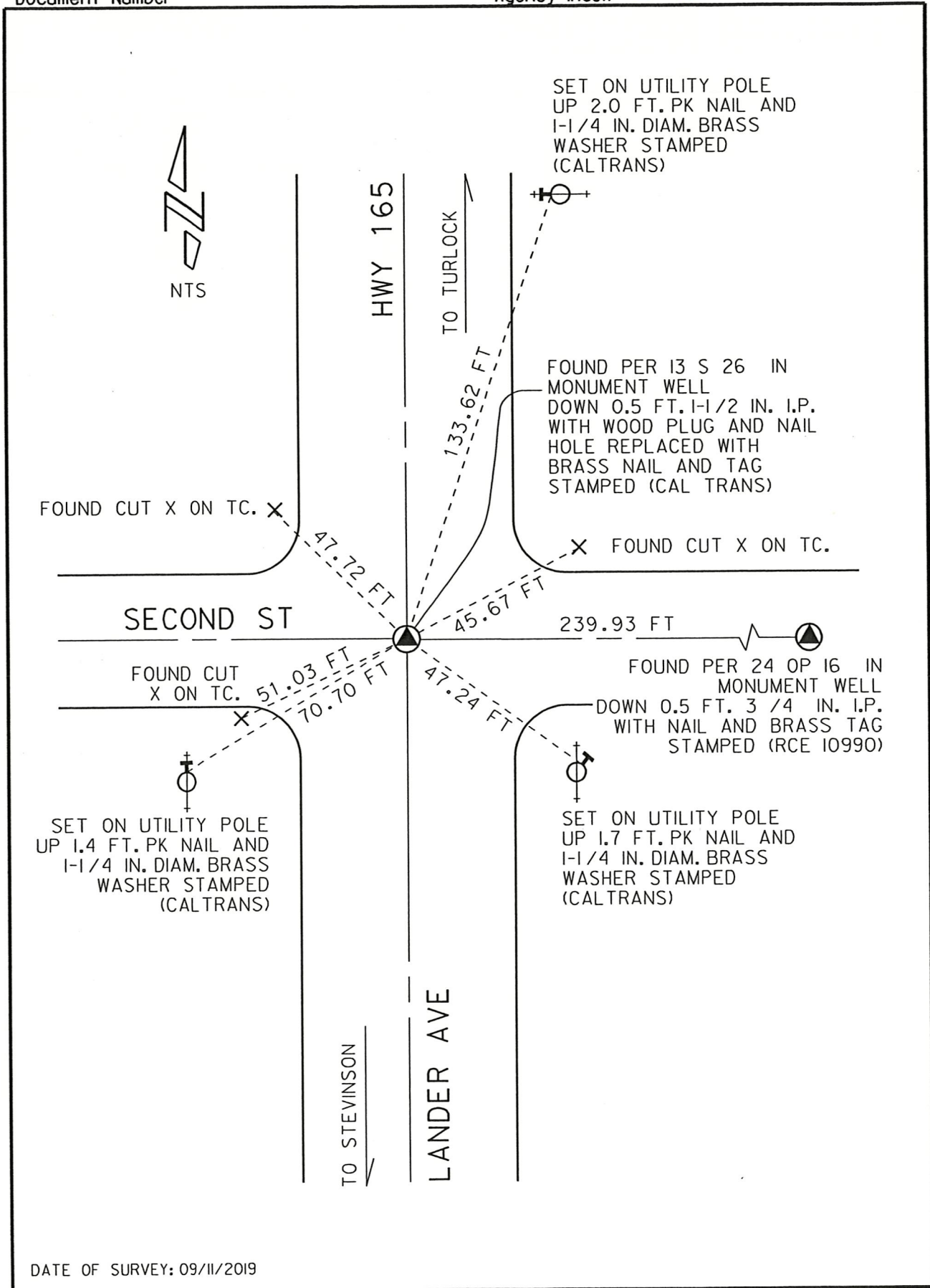


### COUNTY SURVEYOR'S STATEMENT

This Corner Record was received DECEMBER 13, 2019  
 and examined and filed DECEMBER 16, 2019  
 Signed Zach T. Janz P.L.S. or R.C.E. No. 8664  
 Title COUNTY SURVEYOR



County Surveyor's Comment



DATE OF SURVEY: 09/11/2019