

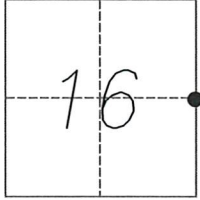
# CORNER RECORD

Agency Index 2031

Document Number \_\_\_\_\_

City of \_\_\_\_\_ County of MERCED, California

Brief Legal Description EAST 1/4 CORNER SECTION 16, T.6S.,R.10E., M.D.B.&M.



T.6S., R.10E.

### CORNER TYPE

- Government Corner  Control
- Meander  Property
- Rancho  Other

Date of Survey MARCH 13, 2019

### COORDINATES (Optional)

N. \_\_\_\_\_ E. \_\_\_\_\_

Elevation \_\_\_\_\_

Units Metric  U.S. Survey Foot

Horizontal Datum \_\_\_\_\_

Zone \_\_\_\_\_ Epoch Date \_\_\_\_\_

Vertical Datum \_\_\_\_\_

Complies with Public Resources Code §§8801-8819

Complies with Public Resources Code §§8890-8902

PLS Act Ref.:  8765(d)  8771  8773  Other:

Corner/Monument:  Left as found  Established  Rebuilt  Pre-Construction

Found and tagged  Reestablished  Referenced  Post-Construction

Narrative of corner identified and monument as found, set, reset, replaced, or removed:

See sheet #2 for description(s):

*MONUMENT MAY BE DISTURBED DUE TO CONSTRUCTION*

### SURVEYOR'S STATEMENT

This Corner Record was prepared by me or under my direction in conformance with

the Professional Land Surveyors' Act on 5-29-2019

Signed [Signature] P.L.S. or R.C.E. No. 9417



### COUNTY SURVEYOR'S STATEMENT

This Corner Record was received MAY 31, 2019

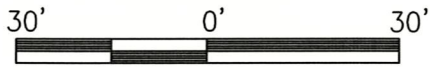
and examined and filed JUNE 6, 2019

Signed Zach T. Janz P.L.S. or R.C.E. No. 8664

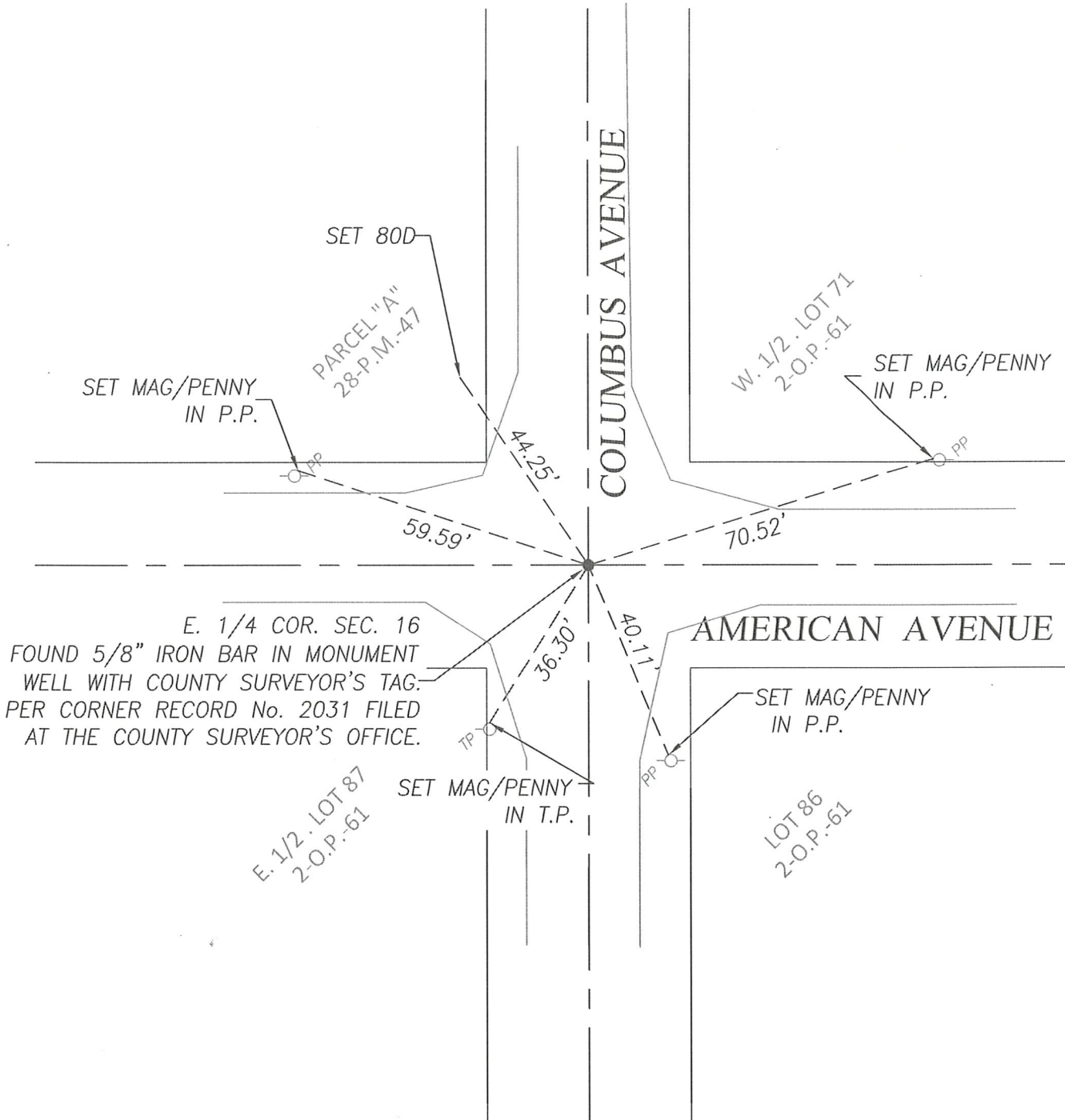
Title COUNTY SURVEYOR

County Surveyor's Comment





SCALE: 1" = 30'



E. 1/4 COR. SEC. 16  
 FOUND 5/8" IRON BAR IN MONUMENT  
 WELL WITH COUNTY SURVEYOR'S TAG.  
 PER CORNER RECORD No. 2031 FILED  
 AT THE COUNTY SURVEYOR'S OFFICE.