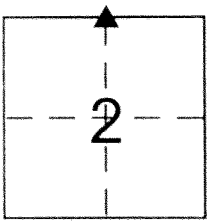


CORNER RECORD

Document Number 2028

City of _____ County of Merced, California

Brief Legal Description N1/4 Corner, Sec. 2. T.7 S, R. 10 E., M.D.B. & M.



CORNER TYPE

Government Corner Control

Meander Property

Rancho Other

Date of Survey 01-24-2013

COORDINATES (Optional)

N. _____

E. _____

Zone _____ NAD27 NAD83

NAD83 Epoch _____

Elev. _____

Vert. Datum: NGVD29 NAVD88

Meas. Units: Metric Imperial

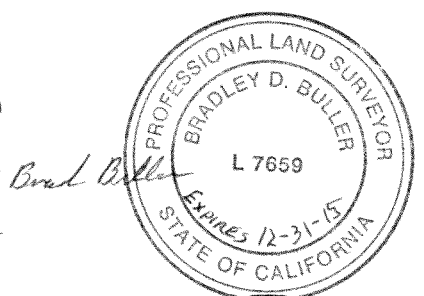
Corner - Left as found Found and tagged Established Reestablished Rebuilt

Identification and type of corner found: Evidence used to identify or procedure used to establish or reestablish the corner:
Found 1.5" Iron Pipe set in concrete with CALTRANS tag and tack in center of pipe. Monument is down 0.5' under the asphalt in the center of Westside Blvd. per R.S. vol.9 page 1.,1967.

A description of the physical condition of the monument as found and as set or reset: Monument was found in good condition.

SURVEYOR'S STATEMENT

This Corner Record was prepared by me or under my direction in conformance with the Land Surveyor's Act on MARCH 20, 2013
 Signed Bradley D. Buller P.L.S or R.C.E. No. L7659



COUNTY SURVEYOR'S STATEMENT

This Corner Record was received March 21, 2013
 and examined and filed April 4, 2013
 Signed J. Steven Reichmuth P.L.S or ~~R.C.E.~~ No. 4895
 Title Acting County Surveyor



County Surveyor's Comment 9 R.S. 1 Found an 1 1/4" iron pipe 4" below pavement.

