

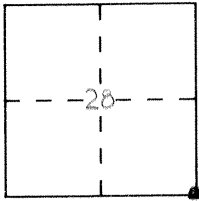
CORNER RECORD

Document Number 2022

City of \_\_\_\_\_

County of MERCED, California

Brief Legal Description SE CORNER SECTION 28



CORNER TYPE

- Government Corner  Control
- Meander  Property
- Rancho  Other
- Date of Survey 3-14-92

COORDINATES (Optional)

N. \_\_\_\_\_  
 E. \_\_\_\_\_  
 Zone \_\_\_\_\_ Datum \_\_\_\_\_  
 Elev. \_\_\_\_\_

Corner — Left as found  Found and tagged  Established  Reestablished  Rebuilt

Identification and type of corner found: Evidence used to identify or procedure used to establish or reestablish the corner:  
FOUND 1 1/2" I.P., NO TAG, IN MONUMENT BOX

A description of the physical condition of the monument as found and as set or reset: \_\_\_\_\_

Not paved over - 8-24-93

F.B. 658-28

SURVEYOR'S STATEMENT

This Corner Record was prepared by me or under my direction in conformance with the Land Surveyors' Act on Sept. 7 1993.

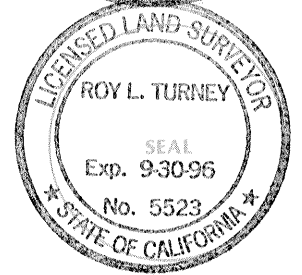
Signed [Signature] L.S. or R.C.E. Number \_\_\_\_\_



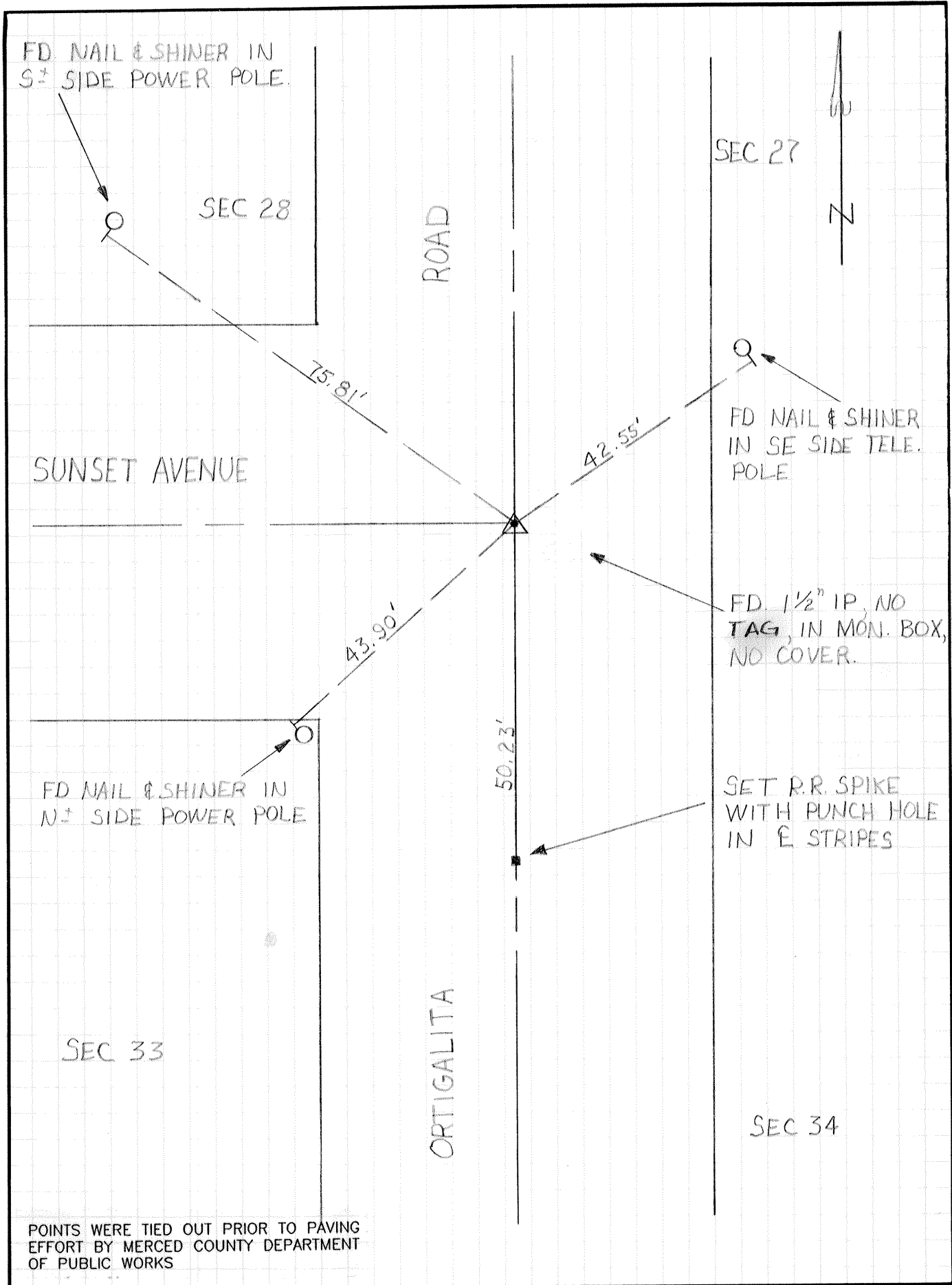
COUNTY SURVEYOR'S STATEMENT

This Corner Record was received SEPT 1993 and examined and filed SEPT. 16, 1993.

Signed [Signature] Title DEP. CO. SUR.



County Surveyor's Comment \_\_\_\_\_



POINTS WERE TIED OUT PRIOR TO PAVING EFFORT BY MERCED COUNTY DEPARTMENT OF PUBLIC WORKS