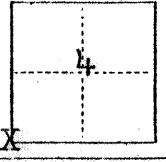


#2021

### CORNER RECORD

COUNTY OF MERCED T. 11S R. 11E MDBM MERIDIAN CALIFORNIA

CORNER TYPE: GOV'T. CORNER  MEANDER  RANCHO  CONTROL  OTHER   
CORNER IDENTIFICATION — DATE OF VISIT JAN. 26 1979



CORNER IS ALSO THE SOUTHWEST PROPERTY CORNER OF THE "OLD REEDLY GUN CLUB". VOL. 553, PAGE 343, MCR.

CORNER — LEFT AS FOUND  FOUND AND TAGGED  REESTABLISHED OBLITERATED CORNER  REBUILT

PHYSICAL DESCRIPTION OF CORNER FOUND; EVIDENCE AND METHOD USED TO IDENTIFY OR REESTABLISH

FOUND 2" I.P. IN VERY POOR CONDITION, DOWN 3.0 FT. I MEASURED WEST 5279.5 FT. FROM THE SO. E. CORNER OF SECTION 4 T11S; R11E; (RECORD 5280). LOCATION WAS CONFIRMED BY TIES SUPPLIED BY STODDARD & ASSOCIATES OF LOS BANOS. TIE = 1.0 EAST OF A POLE LINE SOUTH. 1.0 NORTH OF A POLELINE WEST.

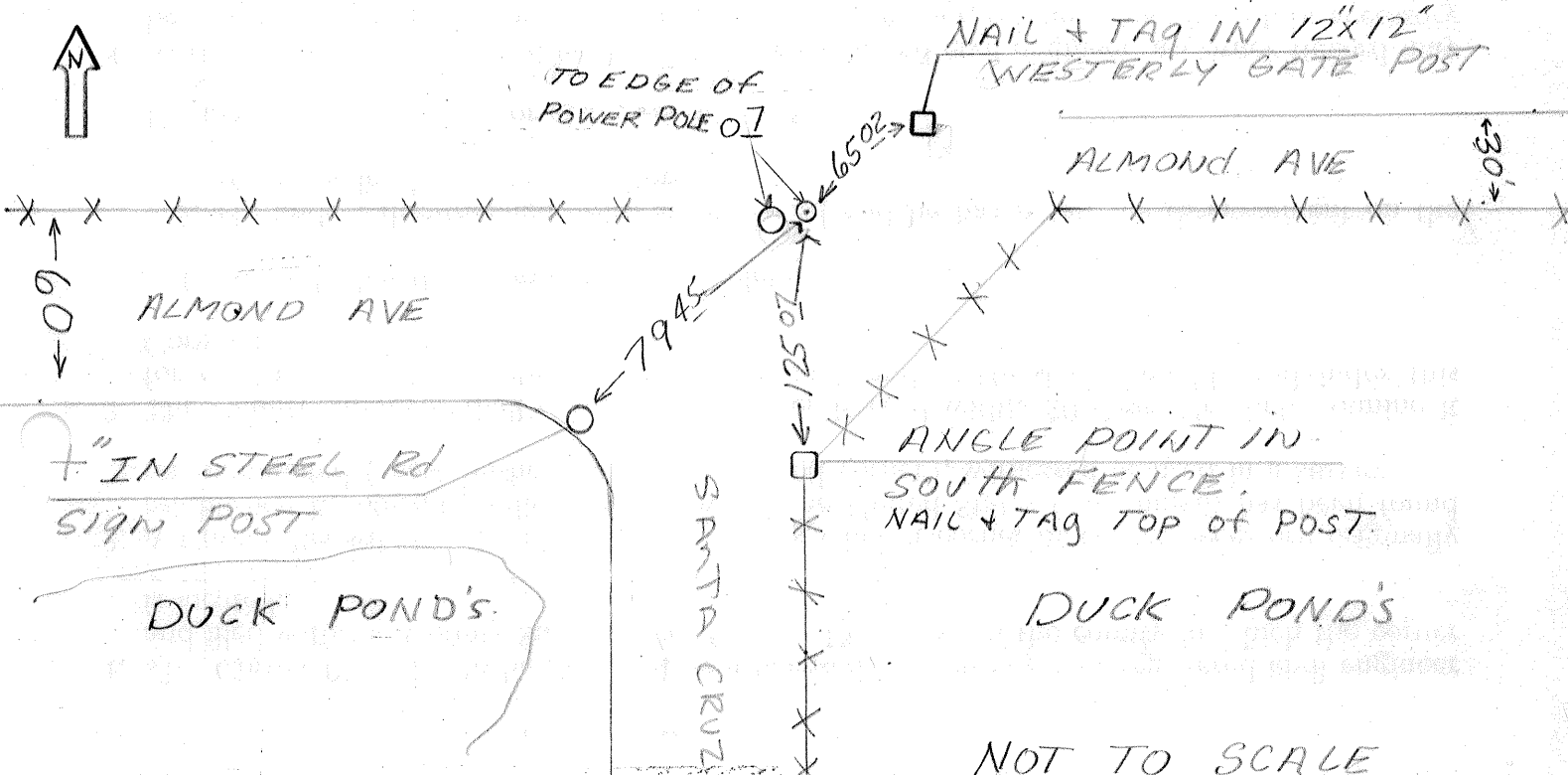
PHYSICAL DESCRIPTION OF MONUMENTS REBUILT OR PERPETUATED

DROVE A 3/4 INCH BY 5 FOOT GALVANIZED PIPE THRU THE CENTER OF THE FOUND 2 INCH PIPE. TAGGED SAME L. S. 4578. LEFT MONUMENT ABOVE GROUND .4 FEET.

CALIFORNIA COORDINATE SYSTEM ORDER: FIRST  SECOND  THIRD   
STATIONS USED: NGS (USC & GS)  STATE  COUNTY  OTHER  STATION \_\_\_\_\_ STATION \_\_\_\_\_  
ZONE \_\_\_\_\_ ELEVATION \_\_\_\_\_ NORTHINGS (Y) \_\_\_\_\_ EASTINGS (X) \_\_\_\_\_  
NOT AVAILABLE

(Fold)

SKETCH: (Include reference tie or witness points, remarks and topo of area)



SURVEYOR'S CERTIFICATE

THIS CORNER RECORD WAS PREPARED BY THE SURVEYOR IN THE \_\_\_\_\_ DIRECTION IN CONFORMANCE WITH THE \_\_\_\_\_ AND \_\_\_\_\_ OF \_\_\_\_\_ OF \_\_\_\_\_ 1-30 1979.  
SIGNED: David F. Jones  
L.S. or R.C.E. No.: L.S. 4578

COUNTY SURVEYOR'S CERTIFICATE

THE CORNER RECORD WAS RECEIVED \_\_\_\_\_ 19\_\_\_\_\_  
AND EXAMINED AND FILED \_\_\_\_\_ 19\_\_\_\_\_  
BY: \_\_\_\_\_  
TITLE: \_\_\_\_\_  
DOCUMENT No. 2021  
STATEMENT ON BACK OF SHEET YES  NO