

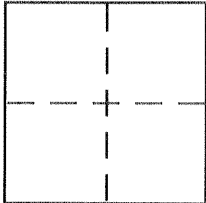
CORNER RECORD

Document Number 2006-BB

City of _____

County of MERCED, California

Brief Legal Description S.W. CORNER PARCEL 2, 87 PM 16, M.C.R.



CORNER TYPE

Government Corner Control
Meander Property
Rancho Other
Date of Survey 2-10-05

COORDINATES (Optional)

N. _____
E. _____
Zone _____ NAD27 NAD83
NAD83 Epoch _____
Elev. _____
Vert. Datum: NGVD29 NAVD88
Meas. Units: Metric Imperial

Corner - Left as found Found and tagged Established Reestablished Rebuilt

Identification and type of corner found: Evidence used to identify or procedure used to establish or reestablish the corner:

FOUND 3/4" IRON PIPE AS SET BY RECORD OF SURVEY
FOR STEPHEN TAYLOR, 22 R.S. 8, M.C.R.
MAY BE DESTROYED WITH BLOCK WALL CONSTRUCTION

A description of the physical condition of the monument as found and as set or reset: GOOD

SURVEYOR'S STATEMENT

This Corner Record was prepared by me or under my direction in conformance with

the Land Surveyor's Act on APRIL 15, 2005

Signed David Heinrichs P.L.S or R.C.E. No. 7621



COUNTY SURVEYOR'S STATEMENT

This Corner Record was received 4-15-05

and examined and filed 5-9-05

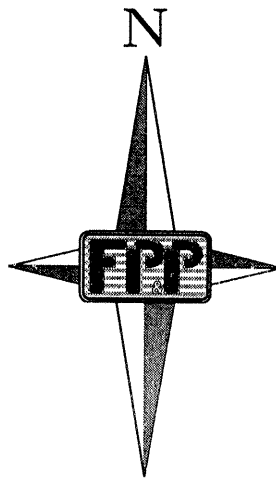
Signed Roy L. Turney P.L.S or R.C.E. No. 5523

Title Dep. Co. Surveyor

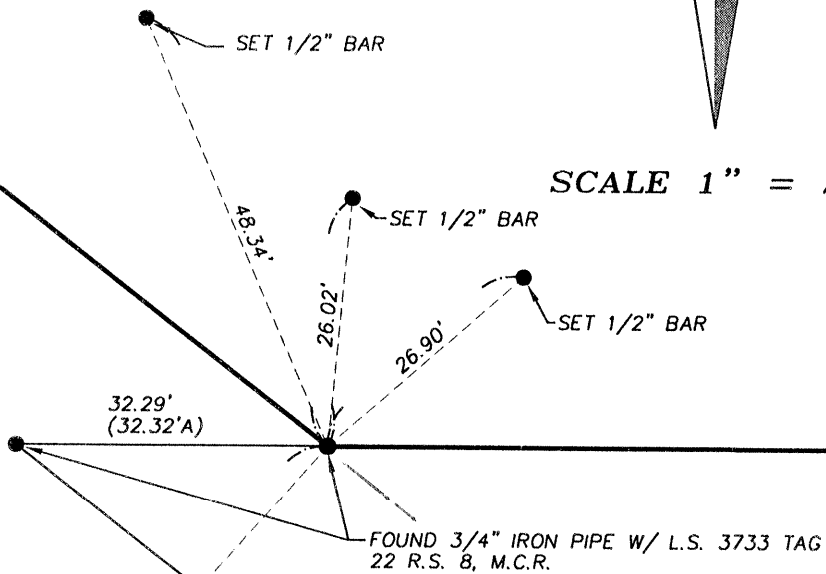


County Surveyor's Comment _____

PARCEL 2
87 P.M. 16



SCALE 1" = 20'



2492
O.R.
292

SANTA
FE
DRIVE

FUTURE RTW LINE