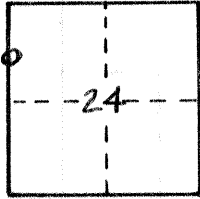


CORNER RECORD

COUNTY OF MERCED, CALIFORNIA

SECTION 24 TOWNSHIP 6 S RANGE 12 E M.D.B. & M.

BRIEF LEGAL DESCRIPTION: SOUTH LINE LOT 56 - MERCED
COLONY NO. 2 Vol. 5 O.P. P. 7



CORNER TYPE:

COORDINATES

GOV'T CORNER CONTROL N. _____

MEANDER PROPERTY _____

RANCHO OTHER ZONE _____

DATE OF SURVEY: _____ ELEV. _____

CORNER - LEFT AS FOUND FOUND AND TAGGED REESTABLISHED REBUILT

PHYSICAL DESCRIPTION OF CORNER FOUND: EVIDENCE USED TO IDENTIFY THE CORNER _____

PHYSICAL DESCRIPTION OF MONUMENTS REBUILT, PERPETUATED, OR RESET 3/4" IP RCE10990

SURVEYOR'S STATEMENT

THIS CORNER RECORD WAS PREPARED BY ME OR UNDER MY DIRECTION IN CONFORMANCE WITH THE LAND SURVEYORS ACT ON 6-8-88

19 _____

SIGNED: Ralph Werner

L.S. OR ~~R.C.E.~~ NO: 5354 EXPIRES 12-31-91

COUNTY SURVEYOR'S STATEMENT

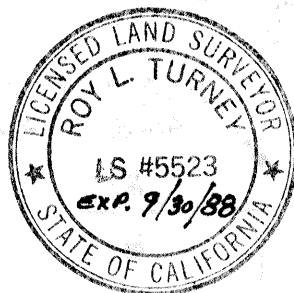
THIS CORNER RECORD WAS RECEIVED 6/8/88 19 88

AND EXAMINED AND FILED 6/14/88 19 88

BY: Roy L. Turney

TITLE: Acting County Surveyor

SEAL

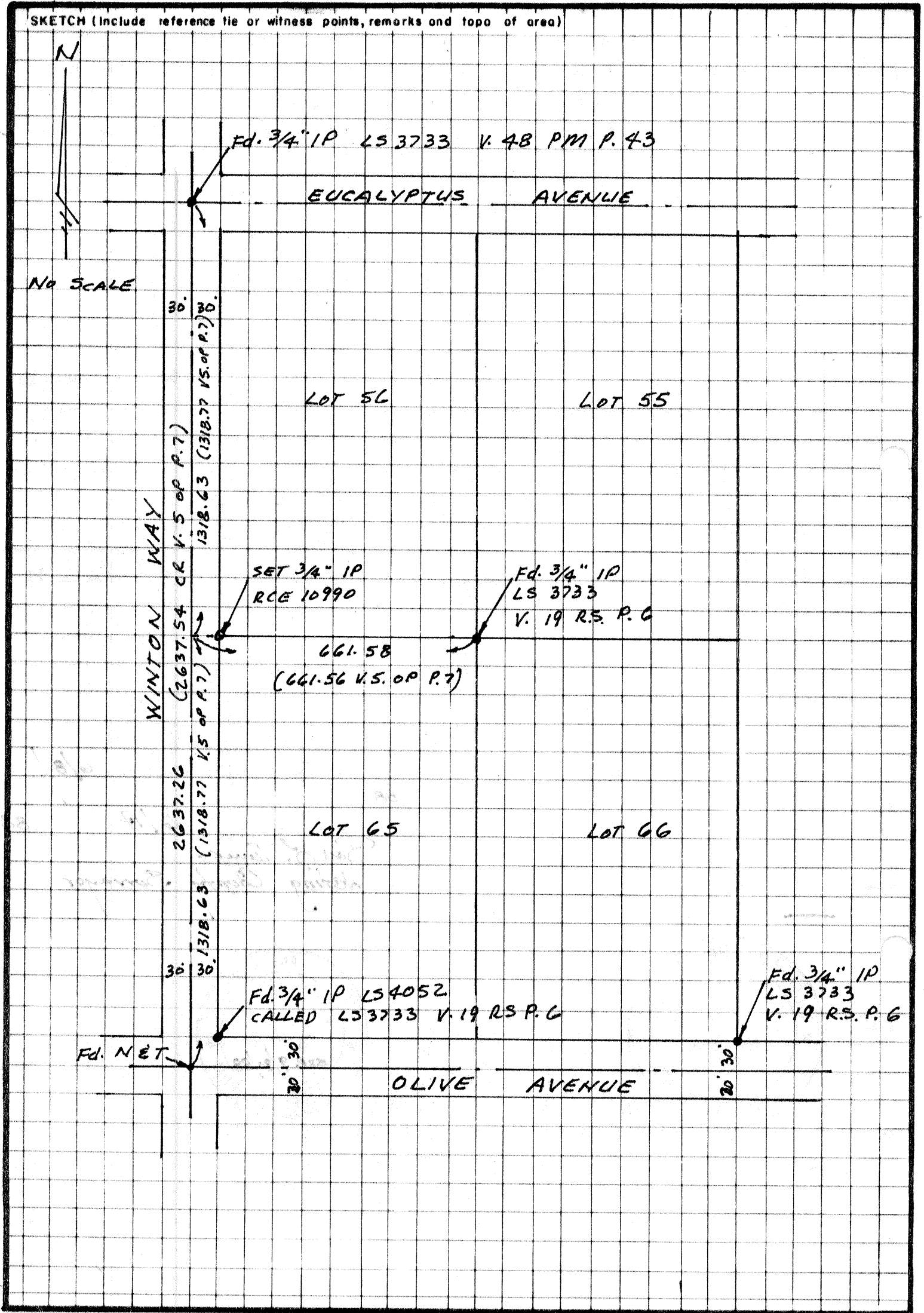


YES NO SKETCH ON BACK OF SHEET

COUNTY SURVEYOR'S STATEMENT: _____

CORNER RECORD

SKETCH (Include reference tie or witness points, remarks and topo of area)



2005-0005