

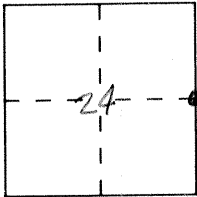
CORNER RECORD

Document Number ~~2005M~~ 2005M.

City of _____

County of MERCED, California

Brief Legal Description E. 1/4 CORNER SECTION 24 T6S R12E



CORNER TYPE

Government Corner Control
Meander Property
Rancho Other
Date of Survey 10-4-91

COORDINATES (Optional)

N. _____
E. _____
Zone _____ Datum _____
Elev. _____

Corner — Left as found Found and tagged Established Reestablished Rebuilt

Identification and type of corner found: Evidence used to identify or procedure used to establish or reestablish the corner:
Found two centerline monuments, GPS/GIS monument

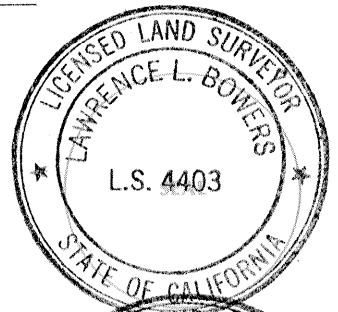
See sketch

A description of the physical condition of the monument as found and as set or reset: _____

SURVEYOR'S STATEMENT

This Corner Record was prepared by me or under my direction in conformance with the Land Surveyors' Act on 3-16 1992.

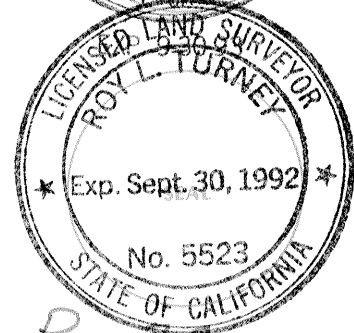
Signed Lawrence L. Bowers L.S. or R.C.E. Number _____



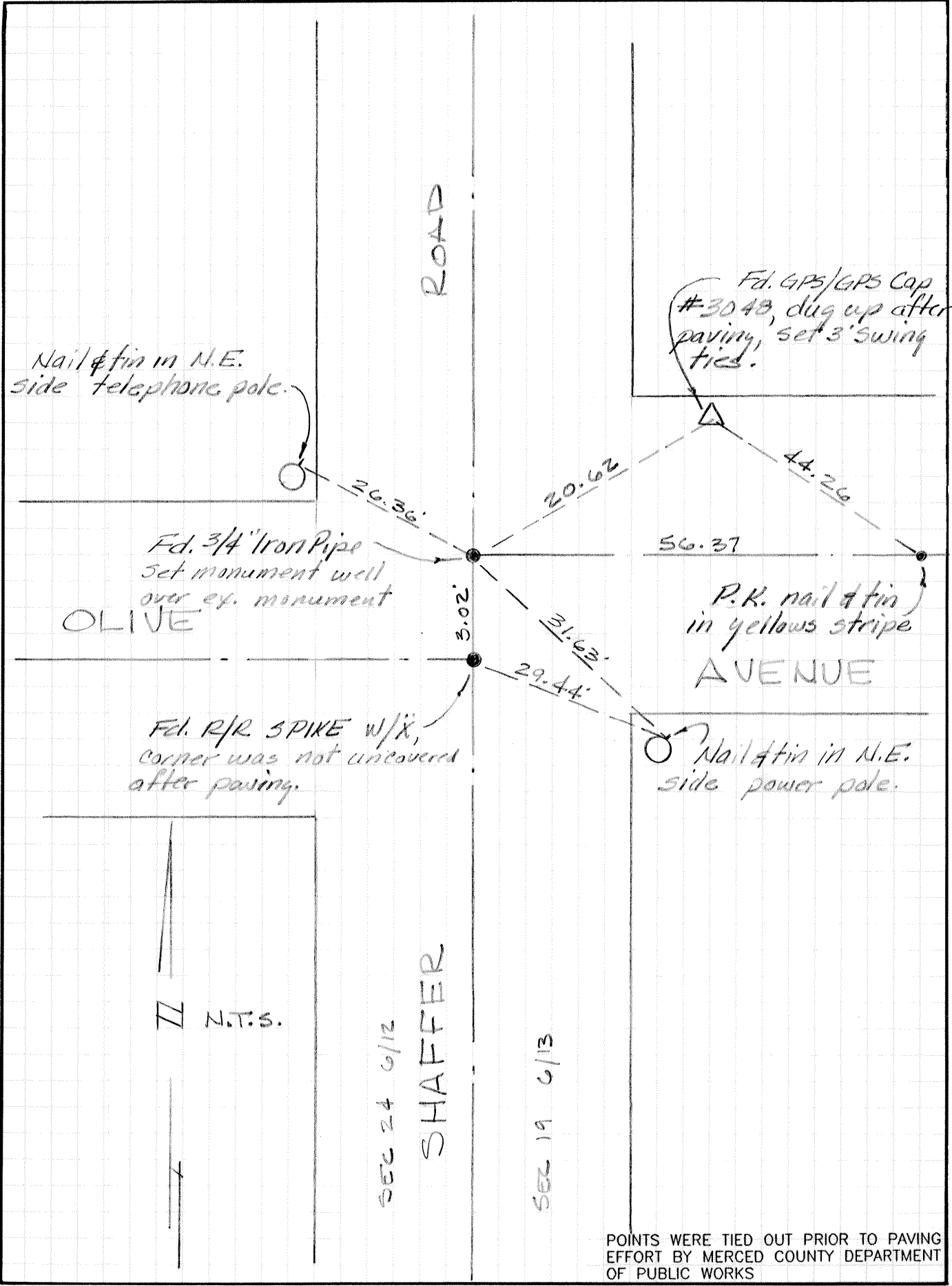
COUNTY SURVEYOR'S STATEMENT

This Corner Record was received 3-17 1992 and examined and filed 3-19 1992.

Signed Roy L. Turney Title Dep Co. Sur



County Surveyor's Comment See Parcel Map Bk. 40 Pg. 27



Fd. GPS/GPS Cap #3048, dug up after paving, set 3' swing ties.

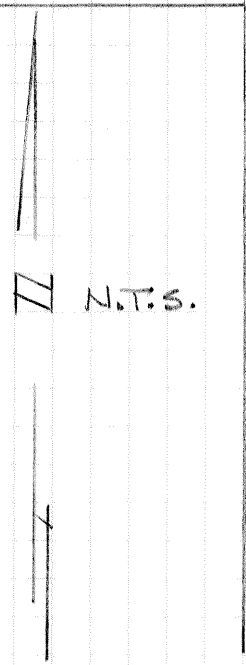
Nail & tin in N.E. side telephone pole.

Fd. 3/4" Iron Pipe Set monument well over ex. monument

P.K. nail & tin in yellow stripe AVENUE

Fd. R/R SPIKE W/X, corner was not uncovered after paving.

Nail & tin in N.E. side power pole.



DEC 24 6/12
SHAFER

DEC 19 6/13

POINTS WERE TIED OUT PRIOR TO PAVING EFFORT BY MERCED COUNTY DEPARTMENT OF PUBLIC WORKS