

1986

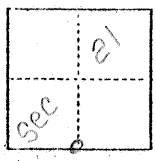
(For County Use Only)

CORNER RECORD

COUNTY OF Merced T. 7S R. 12E MDB MERIDIAN CALIFORNIA

CORNER TYPE: GOV'T. CORNER MEANDER RANCHO CONTROL OTHER

CORNER IDENTIFICATION — DATE OF VISIT March 13, 1978



South 1/4 corner section 21

CORNER — LEFT AS FOUND FOUND AND TAGGED REESTABLISHED OBLITERATED CORNER REBUILT

PHYSICAL DESCRIPTION OF CORNER FOUND; EVIDENCE AND METHOD USED TO IDENTIFY OR REESTABLISH

No existing corner was found. Found S.W. & S.E. corners of section 21. Chained 2643.50 east, from S.W. corner, on section line. Found 1" I.P. w/tag 656 over 4"x4" redwood post 30ft. north of 1/4 corner location and found 1" I.P. over 4"x4" redwood post 10' south of 1/4 corner location. Pulled proper distances from said pipes and set 5/8" iron rod, tagged County Surveyor, for 1/4 corner.

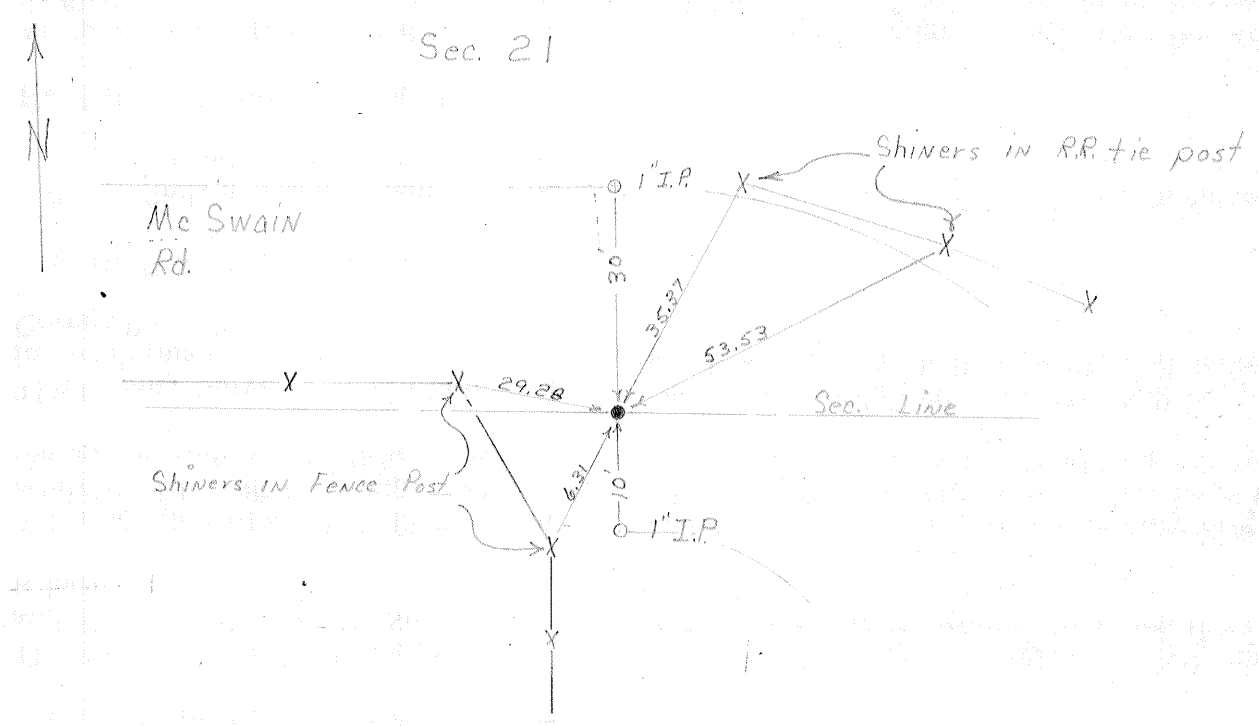
PHYSICAL DESCRIPTION OF MONUMENTS REBUILT OR PERPETUATED

5/8" x 30" iron rod tagged "County Surveyor" placed in position of obliterated 1/4 corner.

CALIFORNIA COORDINATE SYSTEM ORDER: FIRST SECOND THIRD
STATIONS USED: NGS (USC & GS) STATE COUNTY OTHER STATION _____ STATION _____
ZONE _____ ELEVATION _____ NORTHINGS (Y) _____ EASTINGS (X) _____

(Fold)

SKETCH: (Include reference tie or witness points, remarks and topo of area)



SURVEYOR'S CERTIFICATE

THIS CORNER RECORD WAS PREPARED BY ME OR UNDER MY DIRECTION IN CONFORMANCE WITH THE LAND SURVEYORS ACT OF 25 April 1978.

SIGNED: Frank R. Gill
L.S. or R.C.E. No.: 020263

SEAL

COUNTY SURVEYOR'S CERTIFICATE

THE CORNER RECORD WAS RECEIVED _____ 19____
AND EXAMINED AND FILED _____ 19____

BY: _____
TITLE: _____

DOCUMENT No. 1986

STATEMENT ON BACK OF SHEET YES NO