

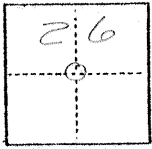
#1981

(For County Use Only)

### CORNER RECORD

COUNTY OF MERCED T. 9 S. R. 13 E. M.D. MERIDIAN CALIFORNIA

CORNER TYPE: GOV'T. CORNER  MEANDER  RANCHO  CONTROL  OTHER   
CORNER IDENTIFICATION — DATE OF VISIT October 19 1979



Interior 1/4 corner of section 26.

CORNER — LEFT AS FOUND  FOUND AND TAGGED  REESTABLISHED OBLITERATED CORNER  REBUILT

PHYSICAL DESCRIPTION OF CORNER FOUND; EVIDENCE AND METHOD USED TO IDENTIFY OR REESTABLISH

Found a 4"x4" redwood post by measuring south from the north quarter corner of section 26, 2648.63 feet,

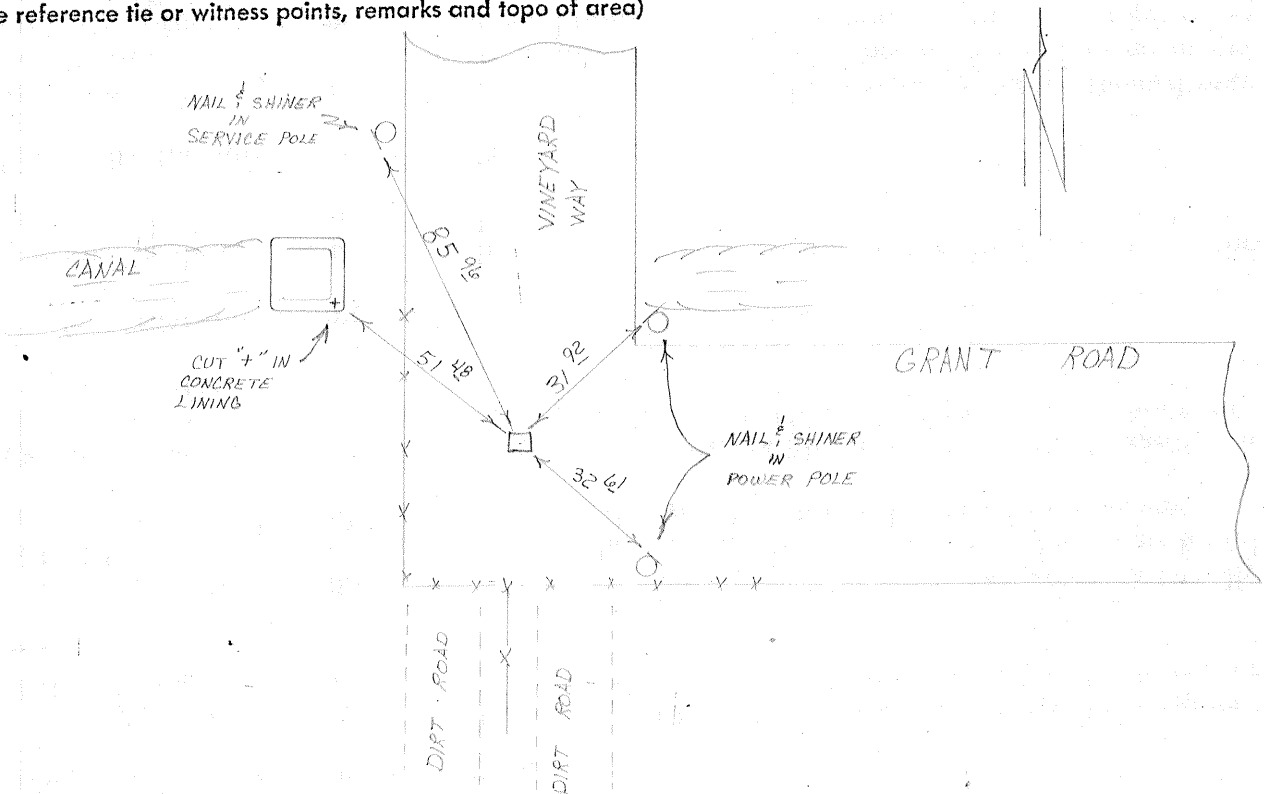
PHYSICAL DESCRIPTION OF MONUMENTS REBUILT OR PERPETUATED

Brought up 4"x4" redwood post with 1 3/8" O.D.I.P., 10" long, Tagged "MERCED COUNTY SURVEYOR"

CALIFORNIA COORDINATE SYSTEM ORDER: FIRST  SECOND  THIRD   
STATIONS USED: NGS (USC & GS)  STATE  COUNTY  OTHER  STATION \_\_\_\_\_ STATION \_\_\_\_\_  
ZONE \_\_\_\_\_ ELEVATION \_\_\_\_\_ NORTHINGS (Y) \_\_\_\_\_ EASTINGS (X) \_\_\_\_\_

(Fold)

SKETCH: (Include reference tie or witness points, remarks and topo of area)



#### SURVEYOR'S CERTIFICATE

THIS CORNER RECORD WAS PREPARED BY ME OR UNDER MY DIRECTION IN CONFORMANCE WITH THE LAND SURVEYORS ACT  
Gr. \_\_\_\_\_ 19\_\_\_\_

SIGNED: \_\_\_\_\_

L.S. or R.C.E. No.: \_\_\_\_\_

SEAL

#### COUNTY SURVEYOR'S CERTIFICATE

THE CORNER RECORD WAS RECEIVED \_\_\_\_\_ 19\_\_\_\_  
AND EXAMINED AND FILED \_\_\_\_\_ 19\_\_\_\_

BY: \_\_\_\_\_

TITLE: \_\_\_\_\_

DOCUMENT No. 1981

STATEMENT ON BACK OF SHEET

YES  NO