

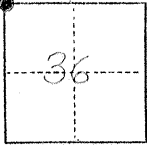
No 1979

CORNER RECORD

COUNTY OF MERCED T. 9 S R. 13 E M.D.B&M. MERIDIAN CALIFORNIA

CORNER TYPE: GOV'T. CORNER MEANDER RANCHO CONTROL OTHER

CORNER IDENTIFICATION — DATE OF VISIT Sept. 1976



SECTION CORNER: NORTH WEST CORNER OF SECTION 36

CORNER — LEFT AS FOUND FOUND AND TAGGED REESTABLISHED OBLITERATED CORNER REBUILT

PHYSICAL DESCRIPTION OF CORNER FOUND; EVIDENCE AND METHOD USED TO IDENTIFY OR REESTABLISH

FD. 1" IRON PIPE 18" DOWN. SEE FIELD BOOK 60 PAGE 33 M.C.R.D.

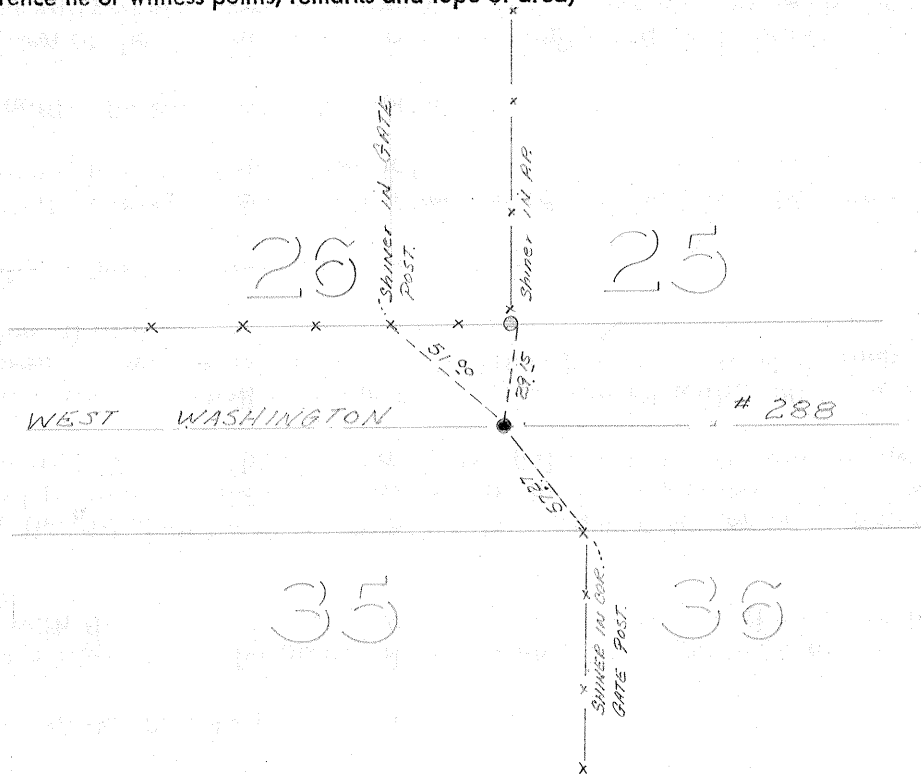
PHYSICAL DESCRIPTION OF MONUMENTS REBUILT OR PERPETUATED

Brought up with 2" IRON Pipe with tag R.C.E. 13,760 SET IN SURVEY ENCASEMENT

CALIFORNIA COORDINATE SYSTEM ORDER: FIRST SECOND THIRD
STATIONS USED: NGS (USC & GS) STATE COUNTY OTHER STATION _____ STATION _____
ZONE _____ ELEVATION _____ NORTHINGS (Y) _____ EASTINGS (X) _____

(Fold)

SKETCH: (Include reference tie or witness points, remarks and topo of area)



SURVEYOR'S CERTIFICATE

THIS CORNER RECORD WAS PREPARED BY ME OR UNDER MY DIRECTION IN CONFORMANCE WITH THE LAND SURVEYORS ACT ON _____ 19____.

SIGNED: _____

L.S. or R.C.E. No.: _____

SEAL

COUNTY SURVEYOR'S CERTIFICATE

THE CORNER RECORD WAS RECEIVED _____ 19____ AND EXAMINED AND FILED _____ 19____.

BY: _____

TITLE: _____

DOCUMENT No. 1979

STATEMENT ON BACK OF SHEET

YES NO