

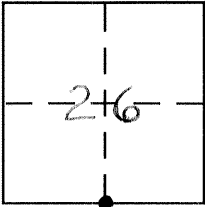
CORNER RECORD

Document Number 1978

City of _____

County of MERCED, California

Brief Legal Description S. 1/4 CORNER, SECTION 26 T.9S., R.13E.



CORNER TYPE

Government Corner Control
Meander Property
Rancho Other
Date of Survey NOV 1999

COORDINATES (Optional)

N. _____
E. _____
Zone _____ NAD27 NAD83
NAD83 Epoch _____
Elev. _____
Vert. Datum: NGVD29 NAVD88
Meas. Units: Metric Imperial

Corner -- Left as found Found and tagged Established Reestablished Rebuilt

Identification and type of corner found: Evidence used to identify or procedure used to establish or reestablish the corner:

Fd. 6" x 6" CONCRETE WITH 1" DIA. BOLT HEAD. MONUMENT FELL ON N/S
FENCE LINE. MEASURED 2647.48' FROM BOLT TO S.W. CORNER SEC. 26.
ALL EVIDENCE BASED UPON INFORMATION FROM "RECORD OF SURVEY
MADE FOR V.A. RODDEN" VOL. 2 PAGE 99

A description of the physical condition of the monument as found and as set or reset: _____

SET SURVEY ENCASEMENT OVER TOP OF CONCRETE & BOLT.
(SEE MAP BACK OF THIS SHEET)

SURVEYOR'S STATEMENT

This Corner Record was prepared by me or under my direction in conformance with the Land Surveyor's Act on DEC. 1999

Signed Roy L. Turney P.L.S or R.C.E. No. 2000



COUNTY SURVEYOR'S STATEMENT

This Corner Record was received JAN 2000

and examined and filed JAN 2000

Signed Roy L. Turney P.L.S or R.C.E. No. 5523

Title DEP. CO. SURVEYOR



County Surveyor's Comment _____

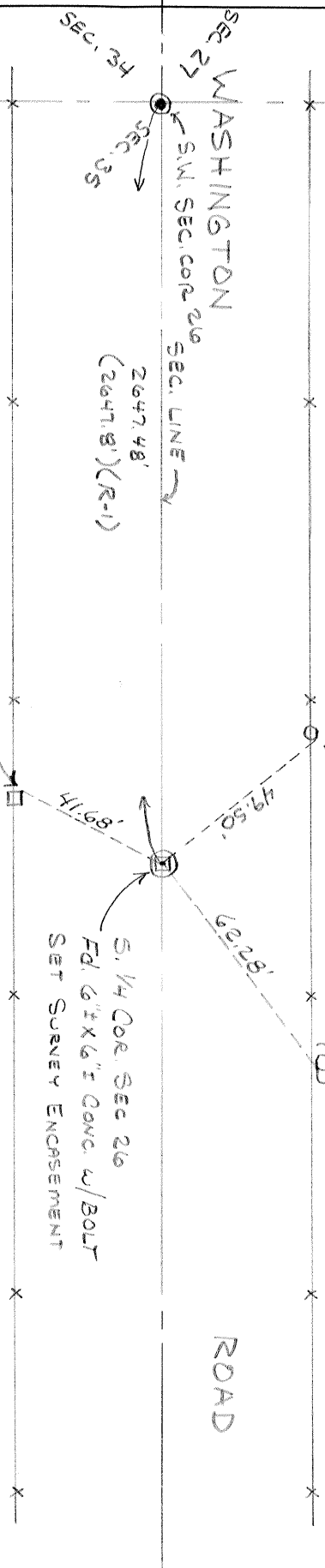


SECTION 26

SET 'X' ON EAST SIDE OF METAL GATE POST

SET NAIL & TIN ON POWER POLE

ROAD



SEC. 27 WASHINGTON
S.W. SEC. COR. 26
SEC. LINE
2647.48'
(2647.8') (R-1)

SET NAIL & TIN ON 2' TALL WOOD POST IN FENCE LINE.

5.14 COR. SEC. 26
Fol 6" x 6" CONC. w/ BOLT
SET SURVEY ENCASUREMENT

R-1 = RECORD OF SURVEY MADE

FOR V.A. RODDEN
VOL. 2 PAGE 99

SECTION 35

T. 9 S., R. 13 E.