

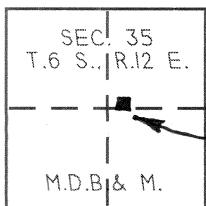
CORNER RECORD

Document Number 1965-III

City of ATWATER

County of MERCED, California

Brief Legal Description LOT 107, VILLAGE WOODS No.2, UNIT 2, BK.26 O.P., PGS.29-31, M.C.R.



APPROXIMATE LOCATION OF LOT

CORNER TYPE

Government Corner Control
Meander Property
Rancho Other
Date of Survey OCTOBER 26, 2006

COORDINATES (Optional)

N. _____
E. _____
Zone _____ NAD27 NAD83
NAD83 Epoch _____
Elev. _____
Vert. Datum: NGVD29 NAVD88
Meas. Units: Metric Imperial

Corner - Left as found Found and tagged Established Reestablished Rebuilt

Identification and type of corner found: Evidence used to identify or procedure used to establish or reestablish the corner:
REESTABLISHED THE SW CORNER OF LOT 107 OF VILLAGE WOODS No. 2, UNIT 2 AS SHOWN ON THE MAP RECORDED IN BK. 26 OF OFFICIAL PLATS AT PGS. 29-31, MERCED COUNTY RECORDS, USING STANDARD PROPORTIONATE MEASUREMENT TECHNIQUES. (SEE MAP ON REVERSE SIDE.)

A description of the physical condition of the monument as found and as set or reset: SET CHISELED "X"
AT THE ABOVE STATED CORNER AS SHOWN ON THE MAP RECORDED IN BK. 26 OF OFFICIAL PLATS AT PGS. 29-31, MERCED COUNTY RECORDS. (SEE DIAGRAM ON REVERSE).

SURVEYOR'S STATEMENT

This Corner Record was prepared by me or under my direction in conformance with the Land Surveyor's Act on 7/23/09
Signed [Signature] P.L.S or R.C.E. No. PLS 4546



COUNTY SURVEYOR'S STATEMENT

This Corner Record was received July 27, 2009
and examined and filed July 30, 2009
Signed [Signature] P.L.S or R.C.E. No. 4895
Title Dep. County Surveyor

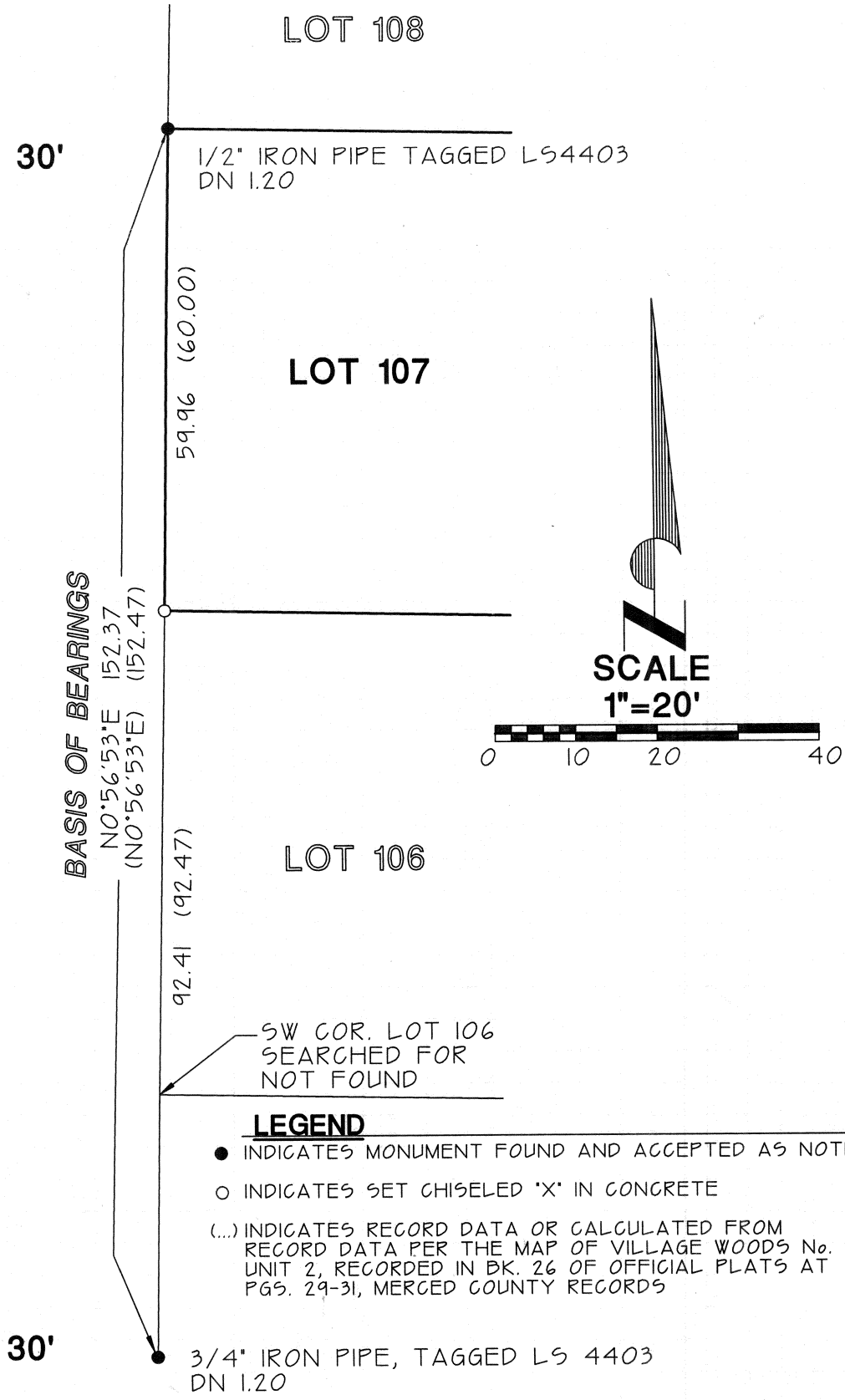


County Surveyor's Comment _____

BASIS OF BEARINGS

BASIS OF BEARINGS IS THE WEST LINE OF LOTS 106 AND 107 OF VILLAGE WOODS No. 2, RECORDED IN BK. 26 OF OFFICIAL PLATS AT PGS. 29-31, MERCED COUNTY RECORDS. TAKEN AS N0°56'53"E

VILLAGE WOODS DRIVE



LEGEND

- INDICATES MONUMENT FOUND AND ACCEPTED AS NOTED
- INDICATES SET CHISELED 'X' IN CONCRETE
- (...) INDICATES RECORD DATA OR CALCULATED FROM RECORD DATA PER THE MAP OF VILLAGE WOODS No. 2 UNIT 2, RECORDED IN BK. 26 OF OFFICIAL PLATS AT PGS. 29-31, MERCED COUNTY RECORDS