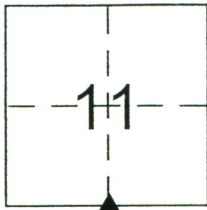


CORNER RECORD

Document Number 1961

City of \_\_\_\_\_ County of Merced, California

Brief Legal Description South 1/4 Corner Section 11, T. 8 S. R. 8 E., M. D. B. & M.



CORNER TYPE

Government Corner  Control   
Meander  Property   
Rancho  Other   
Date of Survey May 12, 2014

COORDINATES (Optional)

N. \_\_\_\_\_  
E. \_\_\_\_\_  
Zone \_\_\_\_\_ NAD27  NAD83   
NAD83 Epoch \_\_\_\_\_  
Elev. \_\_\_\_\_  
Vert. Datum: NGVD29  NAVD88   
Meas. Units: Metric  Imperial

Corner - Left as found  Found and tagged  Established  Reestablished  Rebuilt

Identification and type of corner found: Evidence used to identify or procedure used to establish or reestablish the corner: Found RxR spike with punch mark in 1" iron pipe down 0.1' set in 1.0' diameter monument well. On centerline SR 140/Sullivan Road between Orchard Road and Schmidt Road. Searched County Records and no record found for monument.

A description of the physical condition of the monument as found and as set or reset: Monument was found in good condition. 1' diameter well set during repaving.

SURVEYOR'S STATEMENT

This Corner Record was prepared by me or under my direction in conformance with the Land Surveyor's Act on May 13 2014

Signed Bradley D. Buller P.L.S or R.C.E. No. L7659



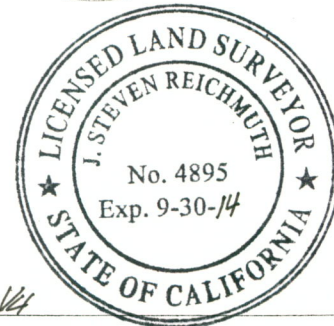
COUNTY SURVEYOR'S STATEMENT

This Corner Record was received May 20, 2014

and examined and filed May 22, 2014

Signed J. Steven Reichmuth P.L.S or R.C.E. No. 4895

Title County Surveyor



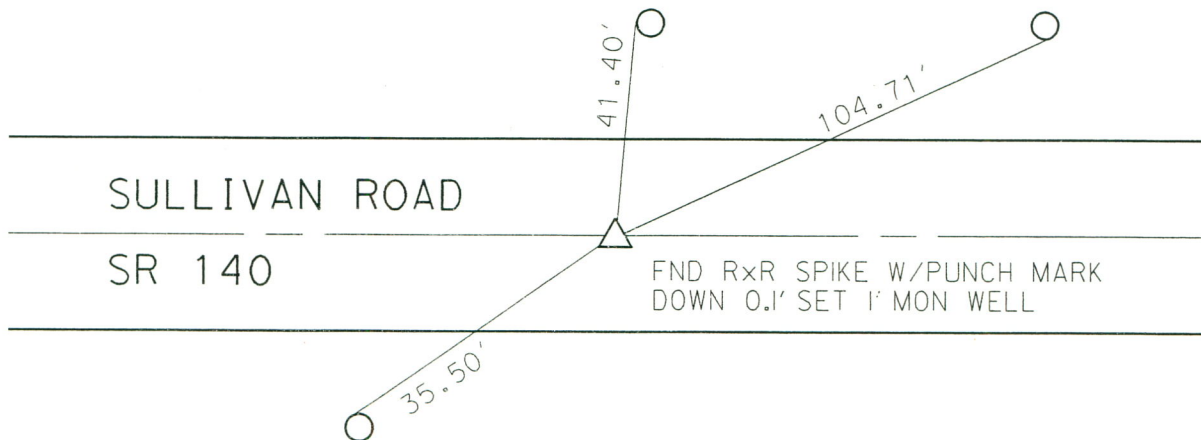
County Surveyor's Comment R.R. Spike was set for south 1/4 corner by 4:2 P.M. 7.



NTS

SET CHISELED 'T'  
ON SIDE OF 1.85' DIA  
CONCRETE STANDPIPE

FND NAIL & SHINER  
IN POWER POLE THEN  
RESET PK & BRASS  
CALTRANS WASHER



SULLIVAN ROAD

SR 140

FND R x R SPIKE W/PUNCH MARK  
DOWN 0.1' SET 1' MON WELL

FND NAIL & SHINER  
IN TELEPHONE POLE