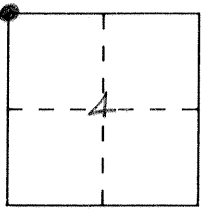


CORNER RECORD

Document Number 1953

City of _____ County of Merced, California

Brief Legal Description N.W. Corner Section 4 9/14



CORNER TYPE

- Government Corner
- Meander
- Rancho
- Date of Survey _____
- Control
- Property
- Other

COORDINATES (Optional)

N. _____
 E. _____
 Zone _____ Datum _____
 Elev. _____

Corner — Left as found Found and tagged Established Reestablished Rebuilt

Identification and type of corner found: Evidence used to identify or procedure used to establish or reestablish the corner:

A description of the physical condition of the monument as found and as set or reset: _____

Fd. 3"x4" post, L.S. 3733, set R/R spike on E. edge.

Monument well set over existing monument 8-30-93
F.B. 658-44

SURVEYOR'S STATEMENT

This Corner Record was prepared by me or under my direction in conformance with the Land Surveyors' Act on Sept. 7 19 93.

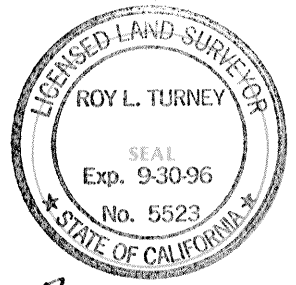
Signed [Signature] L.S. or R.C.E. Number _____



COUNTY SURVEYOR'S STATEMENT

This Corner Record was received SEPT. 19 93 and examined and filed SEPT. 16, 19 93.

Signed [Signature] Title DEP. CO. SUR.



County Surveyor's Comment Agrees with existing Cor. Rec.

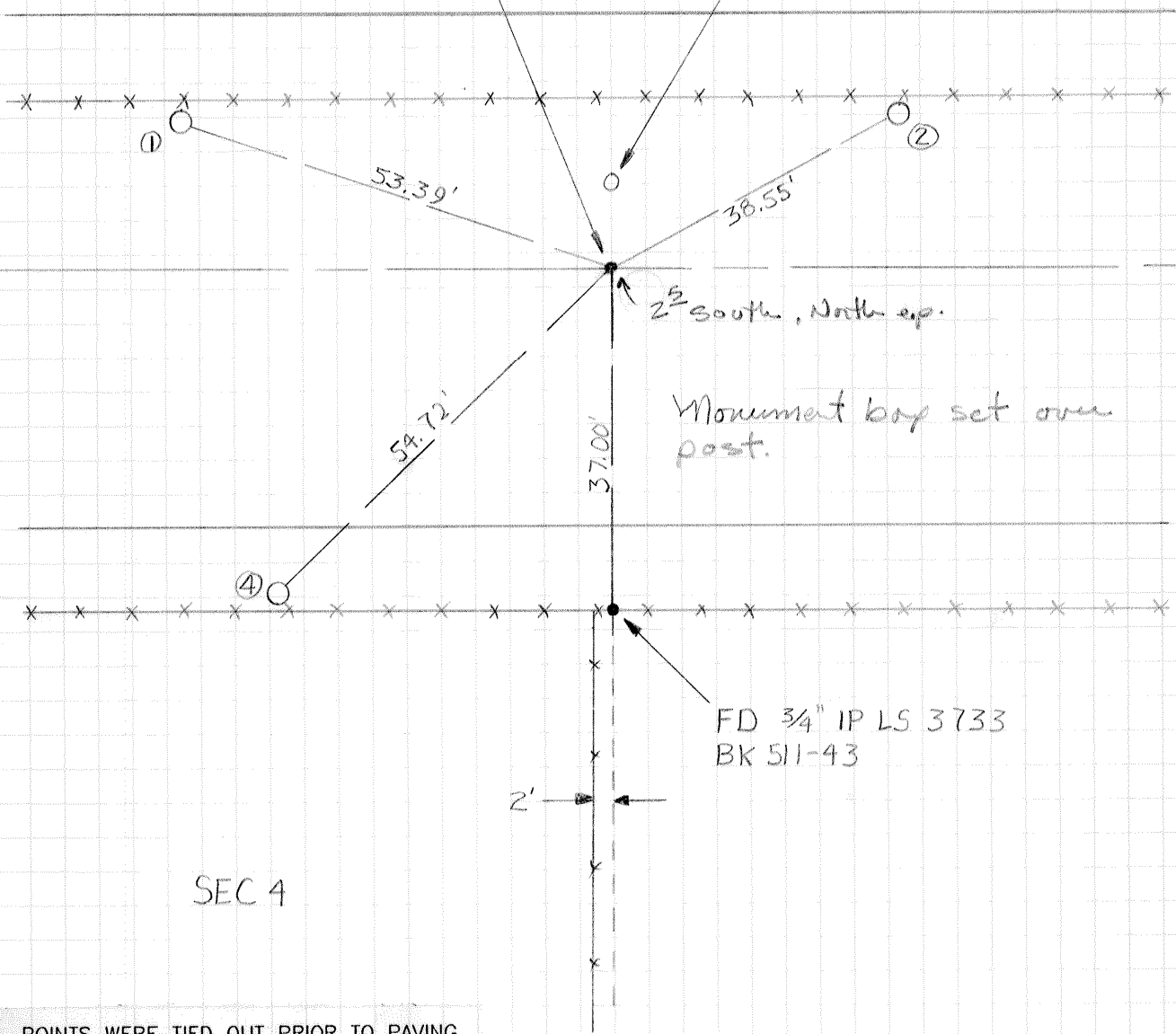
①②④ SET 3/4" IP FLUSH W/BLANK TAG

SEC 33

NW COR. SEC. 4 1/4" FD. 3" x 4"
POST W/BRASS TAG. LS 3733
SET RR SPIKE ON E. SIDE.



SHINER 2' 5/8"



Monument bay set over post.

FD 3/4" IP LS 3733
BK 511-43

SEC 4

POINTS WERE TIED OUT PRIOR TO PAVING
EFFORT BY MERCED COUNTY DEPARTMENT
OF PUBLIC WORKS