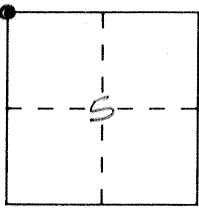


CORNER RECORD

Document Number 1951

City of _____ County of _____, California

Brief Legal Description CC. N.W. Corner Section 5 9/14



CORNER TYPE

- Government Corner Control
- Meander Property
- Rancho Other
- Date of Survey _____

COORDINATES (Optional)

N. _____
 E. _____
 Zone _____ Datum _____
 Elev. _____

Corner — Left as found Found and tagged Established Reestablished Rebuilt

Identification and type of corner found: Evidence used to identify or procedure used to establish or reestablish the corner:

A description of the physical condition of the monument as found and as set or reset: _____

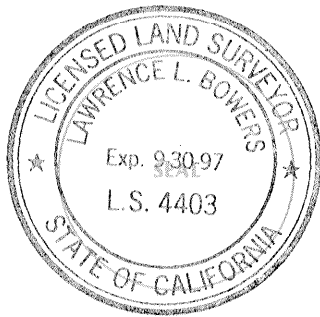
Ed. 3"x3 1/2" redwood post (painted white)

Monument bay set over existing monument. 8-30-93
F.B. 658-35

SURVEYOR'S STATEMENT

This Corner Record was prepared by me or under my direction in conformance with the Land Surveyors' Act on 9-20 19 93.

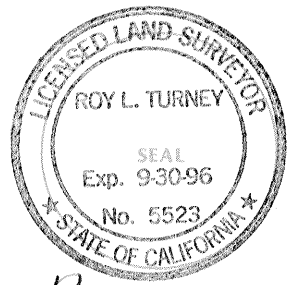
Signed [Signature] L.S. or R.C.E. Number _____



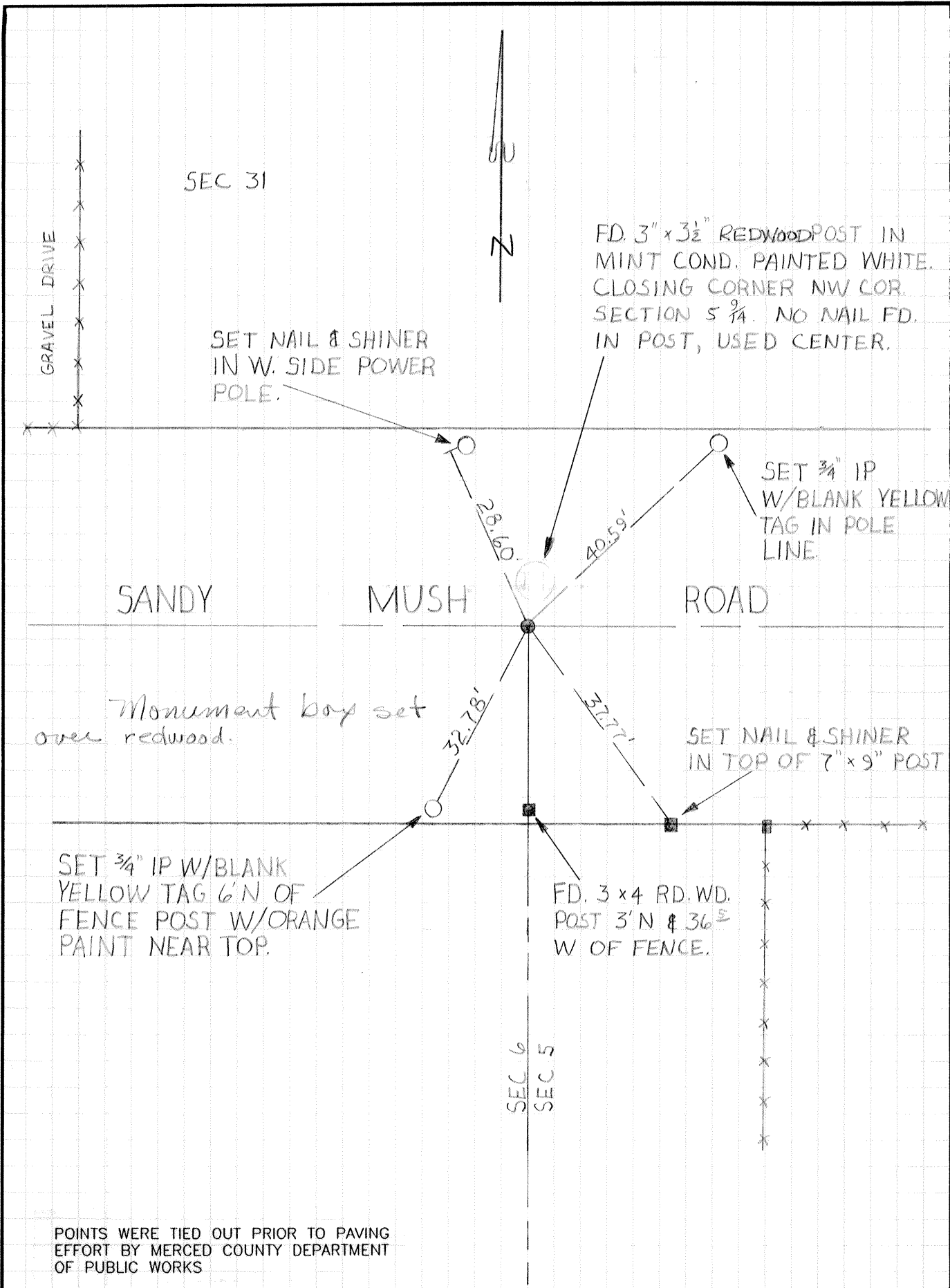
COUNTY SURVEYOR'S STATEMENT

This Corner Record was received SEPT 19 93 and examined and filed SEPT 24, 19 93.

Signed [Signature] Title DEP CO. SUR



County Surveyor's Comment Agrees with existing COR Rec.



POINTS WERE TIED OUT PRIOR TO PAVING EFFORT BY MERCED COUNTY DEPARTMENT OF PUBLIC WORKS