

CORNER RECORD

1911

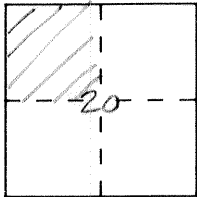
Document Number \_\_\_\_\_

City of \_\_\_\_\_

County of Merced, California

Brief Legal Description NW 1/4 Section 20

7/15



CORNER TYPE

COORDINATES (Optional)

Government Corner  Control   
Meander  Property   
Rancho  Other   
Date of Survey \_\_\_\_\_

N. \_\_\_\_\_  
E. \_\_\_\_\_  
Zone \_\_\_\_\_ Datum \_\_\_\_\_  
Elev. \_\_\_\_\_

Corner — Left as found  Found and tagged  Established  Reestablished  Rebuilt

Identification and type of corner found: Evidence used to identify or procedure used to establish or reestablish the corner:

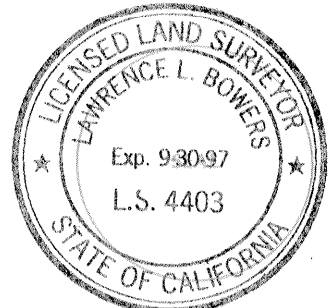
See back

A description of the physical condition of the monument as found and as set or reset: See back

SURVEYOR'S STATEMENT

This Corner Record was prepared by me or under my direction in conformance with the Land Surveyors' Act on 2-24 1997.

Signed [Signature] L.S. or R.C.E. Number L.S. 4403



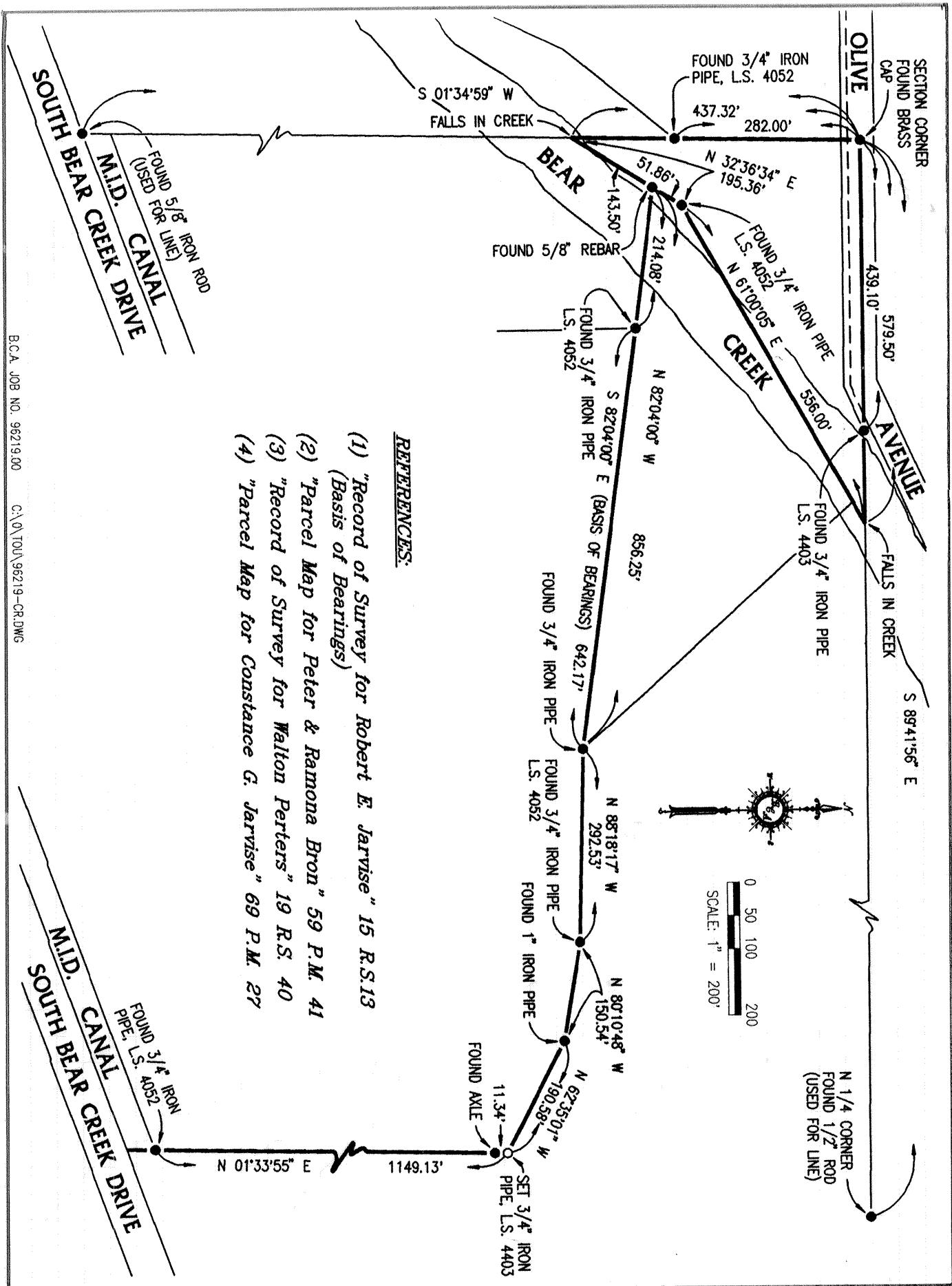
COUNTY SURVEYOR'S STATEMENT

This Corner Record was received FEBRUARY 1997 and examined and filed MARCH 5 1997.

Signed [Signature] Title DEP CO. SDR



County Surveyor's Comment \_\_\_\_\_



- REFERENCES:**
- (1) "Record of Survey for Robert E. Jarvise" 15 R.S.13 (Basis of Bearings)
  - (2) "Parcel Map for Peter & Ramona Bron" 59 P.M. 41
  - (3) "Record of Survey for Walton Perters" 19 R.S. 40
  - (4) "Parcel Map for Constance G. Jarvise" 69 P.M. 27

