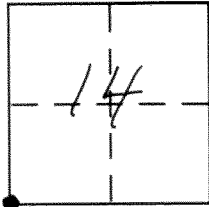


CORNER RECORD

Document Number 1857

City of _____ County of Merced, California

Brief Legal Description Southwest Corner of Section 14, T.7S, R.14E.



CORNER TYPE

Government Corner Control
Meander Property
Rancho Other
Date of Survey October 3, 2012

COORDINATES (Optional)

N. _____
E. _____
Zone _____ NAD27 NAD83
NAD83 Epoch _____
Elev. _____
Vert. Datum: NGVD29 NAVD88
Meas. Units: Metric Imperial

Corner - Left as found Found and tagged Established Reestablished Rebuilt

Identification and type of corner found: Evidence used to identify or procedure used to establish or reestablish the corner:
Found 2" OD. iron pipe, no tag, top 1' bent to the north.
Accepted the bottom of pipe as the southwest corner of
Sec 14, T.7S, R.14E. Tied out prior to reconstruction of
Olive Avenue.

A description of the physical condition of the monument as found and as set or reset: See page 2

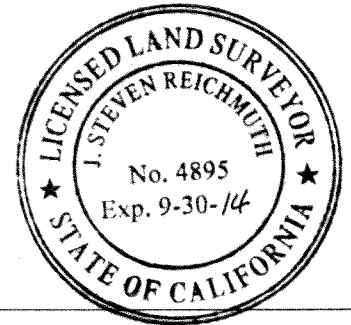
SURVEYOR'S STATEMENT

This Corner Record was prepared by me or under my direction in conformance with
the Land Surveyor's Act on October 30, 2012
Signed [Signature] P.L.S or ~~SEE~~ No. 4895

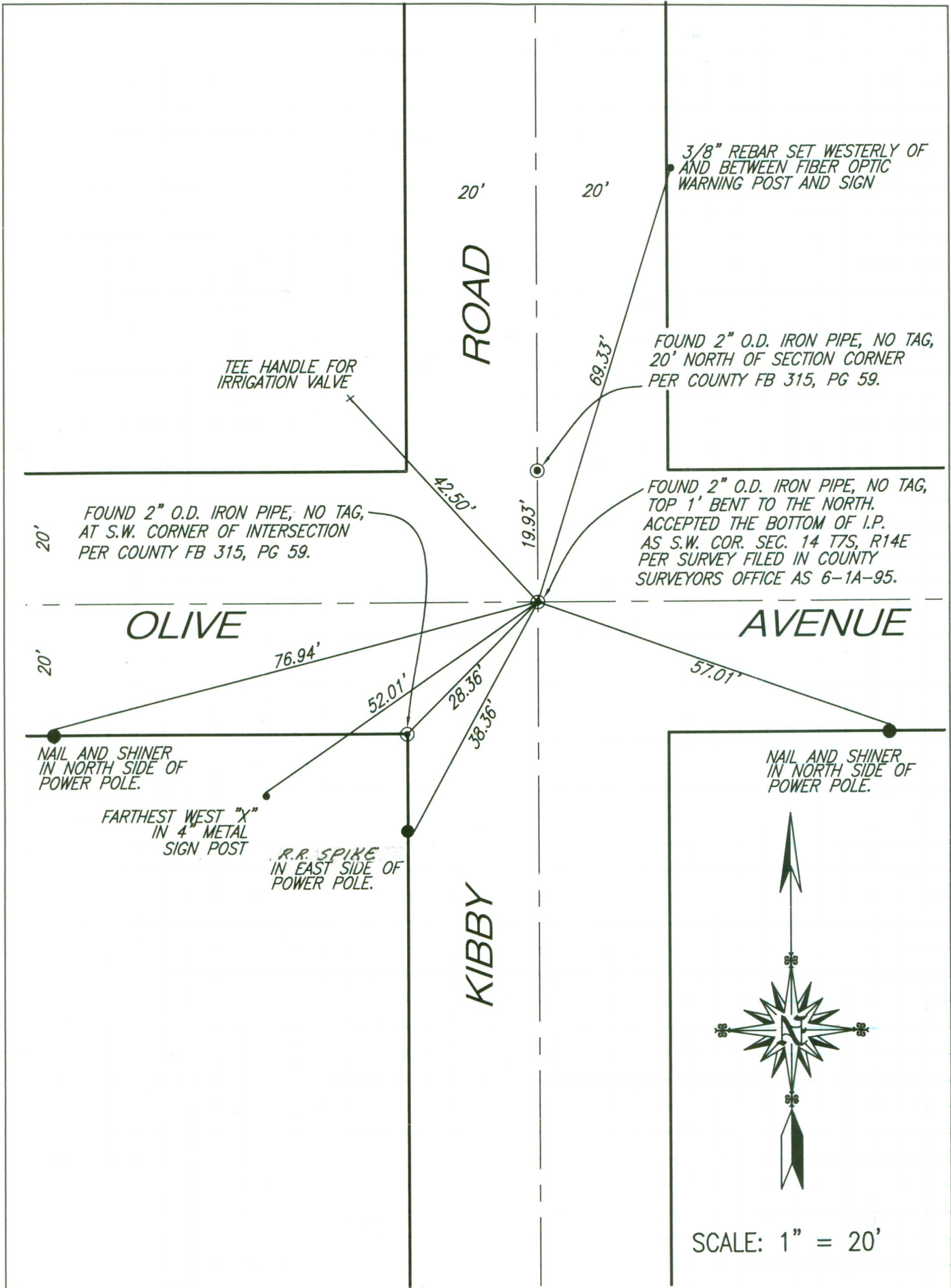


COUNTY SURVEYOR'S STATEMENT

This Corner Record was received October 30, 2012
and examined and filed October 30, 2012
Signed [Signature] P.L.S or ~~SEE~~ No. 4895
Title Acting County Surveyor



County Surveyor's Comment _____



3/8" REBAR SET WESTERLY OF AND BETWEEN FIBER OPTIC WARNING POST AND SIGN

FOUND 2" O.D. IRON PIPE, NO TAG, 20' NORTH OF SECTION CORNER PER COUNTY FB 315, PG 59.

FOUND 2" O.D. IRON PIPE, NO TAG, TOP 1' BENT TO THE NORTH. ACCEPTED THE BOTTOM OF I.P. AS S.W. COR. SEC. 14 T7S, R14E PER SURVEY FILED IN COUNTY SURVEYORS OFFICE AS 6-1A-95.

FOUND 2" O.D. IRON PIPE, NO TAG, AT S.W. CORNER OF INTERSECTION PER COUNTY FB 315, PG 59.

NAIL AND SHINER IN NORTH SIDE OF POWER POLE.

FARTHEST WEST "X" IN 4" METAL SIGN POST

R.R. SPIKE IN EAST SIDE OF POWER POLE.

NAIL AND SHINER IN NORTH SIDE OF POWER POLE.



SCALE: 1" = 20'