

**CORNER RECORD**

COUNTY OF FRESNO T. 11 S. R. 12 E. M.D. BASE + MERIDIAN CALIFORNIA  
 CORNER TYPE: GOVT. CORNER  MEASURE  RANCHO  CONTROL  OTHER   
 CORNER IDENTIFICATION - DATE OF VISIT OCT 7 19 82

2-3

N.W. COR. SEC. 23 T. 11 S. R. 12 E. M.D.B. + M.  
 @ INTERSECTION OF SHAIN AND DOS PALOS AVENUES  
 (HWY. 33)

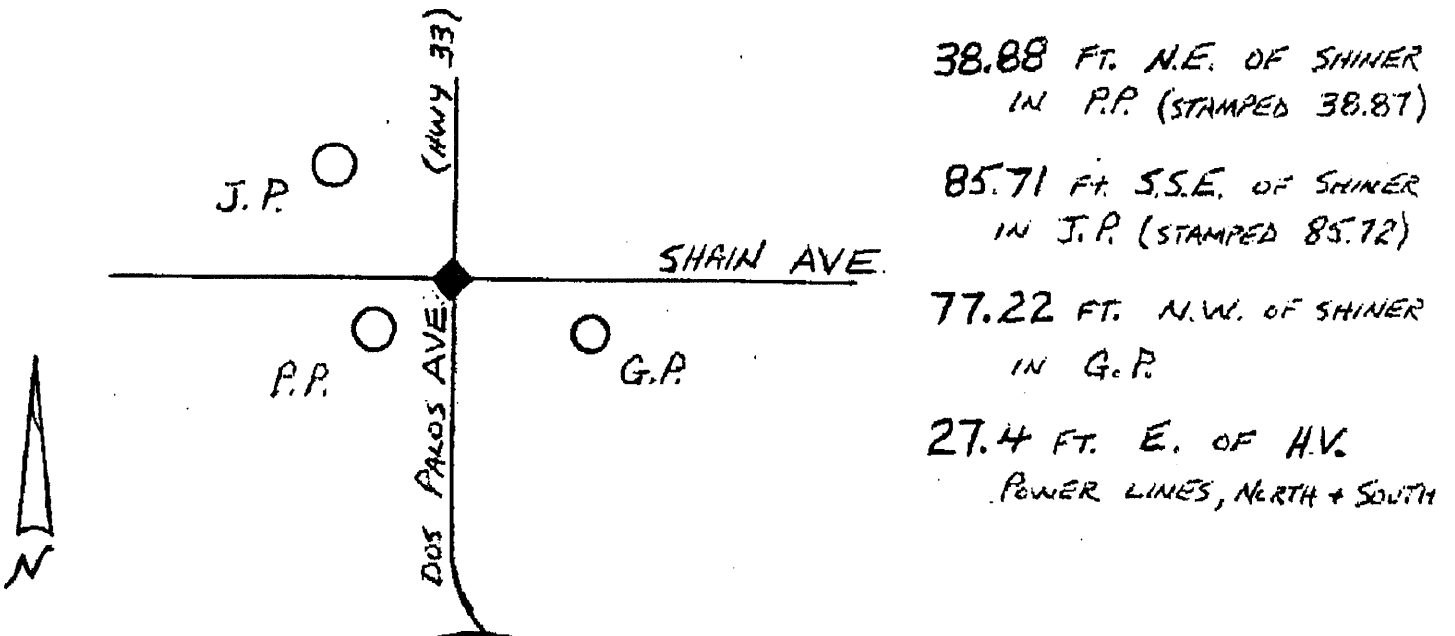
CORNER - LEFT AS FOUND  FOUND AND TAGGED  REESTABLISHED OBLITERATED CORNER  RESULT

PHYSICAL DESCRIPTION OF CORNER FOUND; EVIDENCE AND METHOD USED TO IDENTIFY OR REESTABLISH  
 FOUND CAL. STATE DIV. OF HIGHWAYS BRASS MONUMENT  
 AS PER FRESNO COUNTY TIES ON RECORD

PHYSICAL DESCRIPTION OF MONUMENTS RESULT OR PERPETUATED

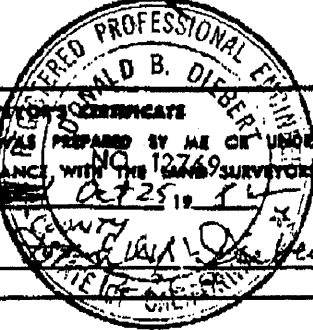
CALIFORNIA COORDINATE SYSTEM ORDER: FIRST  SECOND  THIRD   
 STATIONS USED: NGS (USC & OS)  STATE  COUNTY  OTHER  STATION \_\_\_\_\_ STATION \_\_\_\_\_  
 ZONE \_\_\_\_\_ ELEVATION \_\_\_\_\_ NORTHINGS (Y) \_\_\_\_\_ LASTINGS (X) \_\_\_\_\_

SKETCH: (Include reference tie or witness points, remarks and topo of area)



BY RAW. + CREW

**SURVEYOR'S CERTIFICATE**  
 THIS CORNER RECORD WAS PREPARED BY ME OR UNDER MY DIRECTION IN CONFORMANCE WITH THE LAND SURVEYORS ACT ON OCT 25 19 82 FOR FRESNO COUNTY  
 SIGNED: Donald B. Diebert  
 L.S. or R.C.E. No. \_\_\_\_\_  
 SEAL



**COUNTY SURVEYOR'S CERTIFICATE**  
 THE CORNER RECORD WAS RECEIVED OCT 26 19 82 AND EXAMINED AND FILED OCT 27 1982  
 BY: [Signature]  
 TITLE: SE  
 DOCUMENT No. 2730\*  
 STATEMENT ON BACK OF SHEET  
 \*Merced County Corner Record No. 1783 YES  NO