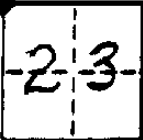


CORNER RECORD

COUNTY OF FRESNO T. 11 S. R. 12 E. M.D. BRSE + MERIDIAN CALIFORNIA

CORNER TYPE: GOVT. CORNER MEANDER RANCHO CONTROL OTHER

CORNER IDENTIFICATION - DATE OF VISIT OCT 7 19 82



N.W. COR. SEC. 23 T. 11 S. R. 12 E. M.D. B. + M.

@ INTERSECTION OF SHAIN AND DOS PALOS AVENUES
(HWY. 33)

CORNER - LEFT AS FOUND FOUND AND TAGGED REESTABLISHED OBLITERATED CORNER RESULT

PHYSICAL DESCRIPTION OF CORNER FOUND; EVIDENCE AND METHOD USED TO IDENTIFY OR REESTABLISH

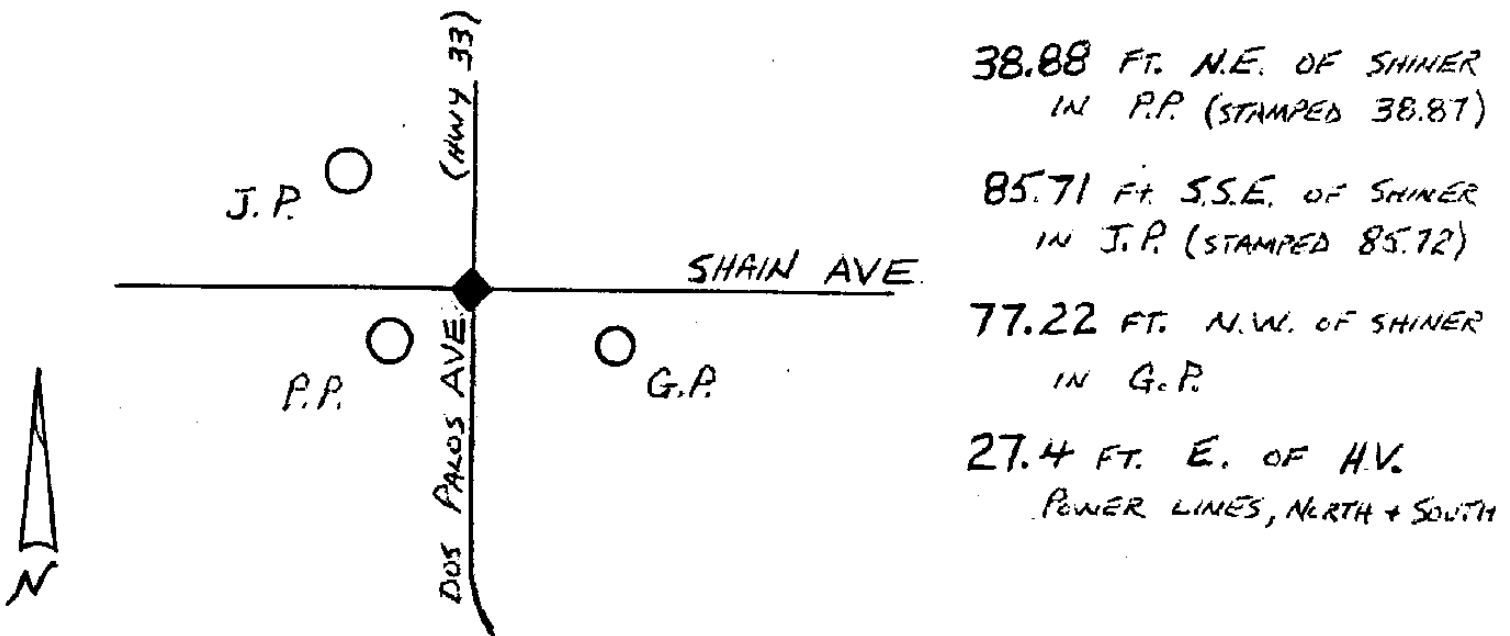
FOUND CAL. STATE DIV. OF HIGHWAYS BRASS MONUMENT

AS PER FRESNO COUNTY TIES ON RECORD

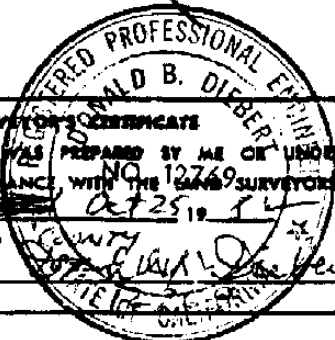
PHYSICAL DESCRIPTION OF MONUMENTS RESULT OR PERPETUATED

CALIFORNIA COORDINATE SYSTEM ORDER: FIRST SECOND THIRD
 STATIONS USED: NGS (USC & GS) STATE COUNTY OTHER STATION _____ STATION _____
 ZONE _____ ELEVATION _____ NORTHINGS (N) _____ EASTINGS (E) _____

SKETCH: (Include reference tie or witness points, remarks and topo of area)



BY RAW. & CREW



SURVEYOR'S CERTIFICATE
 THIS CORNER RECORD WAS PREPARED BY ME OR UNDER MY DIRECTION IN CONFORMANCE WITH THE LAND SURVEYORS ACT ON OCT 25 1982 FOR FRESNO COUNTY
 SIGNED: [Signature]
 I.C. or A.C.E. No. _____

COUNTY SURVEYOR'S CERTIFICATE
 THE CORNER RECORD WAS RECEIVED OCT 26 1982 AND EXAMINED AND FILED OCT 27 1982
 BY: [Signature]
 TITLE: [Signature]
 DOCUMENT No. 2730

STATEMENT ON BACK OF SHEET YES NO