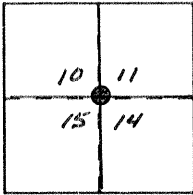


# CORNER RECORD

Document Number \_\_\_\_\_

City of DOS PALOS County of MERCED, California

Brief Legal Description N.E. CORNER SECT. 15., T. 11 S., R. 12 E., M.D.B.E.M.



### CORNER TYPE

Government Corner  Control   
 Meander  Property   
 Rancho  Other   
 Date of Survey 6-26-90

### COORDINATES (Optional)

N. \_\_\_\_\_  
 E. \_\_\_\_\_  
 Zone \_\_\_\_\_ Datum \_\_\_\_\_  
 Elev. \_\_\_\_\_

Corner — Left as found  Found and tagged  Established  Reestablished  Rebuilt

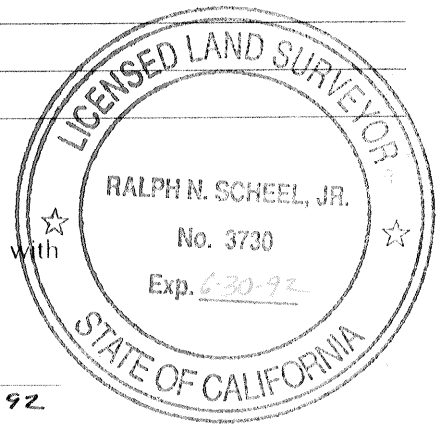
Identification and type of corner found: Evidence used to identify or procedure used to establish or reestablish the corner: FOUND BRASS CAP IN MONUMENT WELL - SCRIBED WITH + AND STAMPED 10, 11, 14, 15, PER PREVIOUS TIES.

A description of the physical condition of the monument as found and as set or reset: MONUMENT IN GOOD CONDITION, DOWN 1" IN MONUMENT WELL

### SURVEYOR'S STATEMENT

This Corner Record was prepared by me or under my direction in conformance with the Land Surveyors' Act on 6 JUNE 26 1990.

Signed Ralph N. Scheel, Jr. L.S. or R.C.E. Number LS 3730  
 LIC. EXP. 6-30-92



### COUNTY SURVEYOR'S STATEMENT

This Corner Record was received Aug 3 1990 and examined and filed August 3 1990.

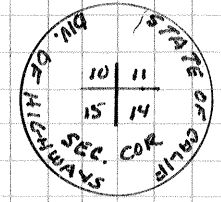
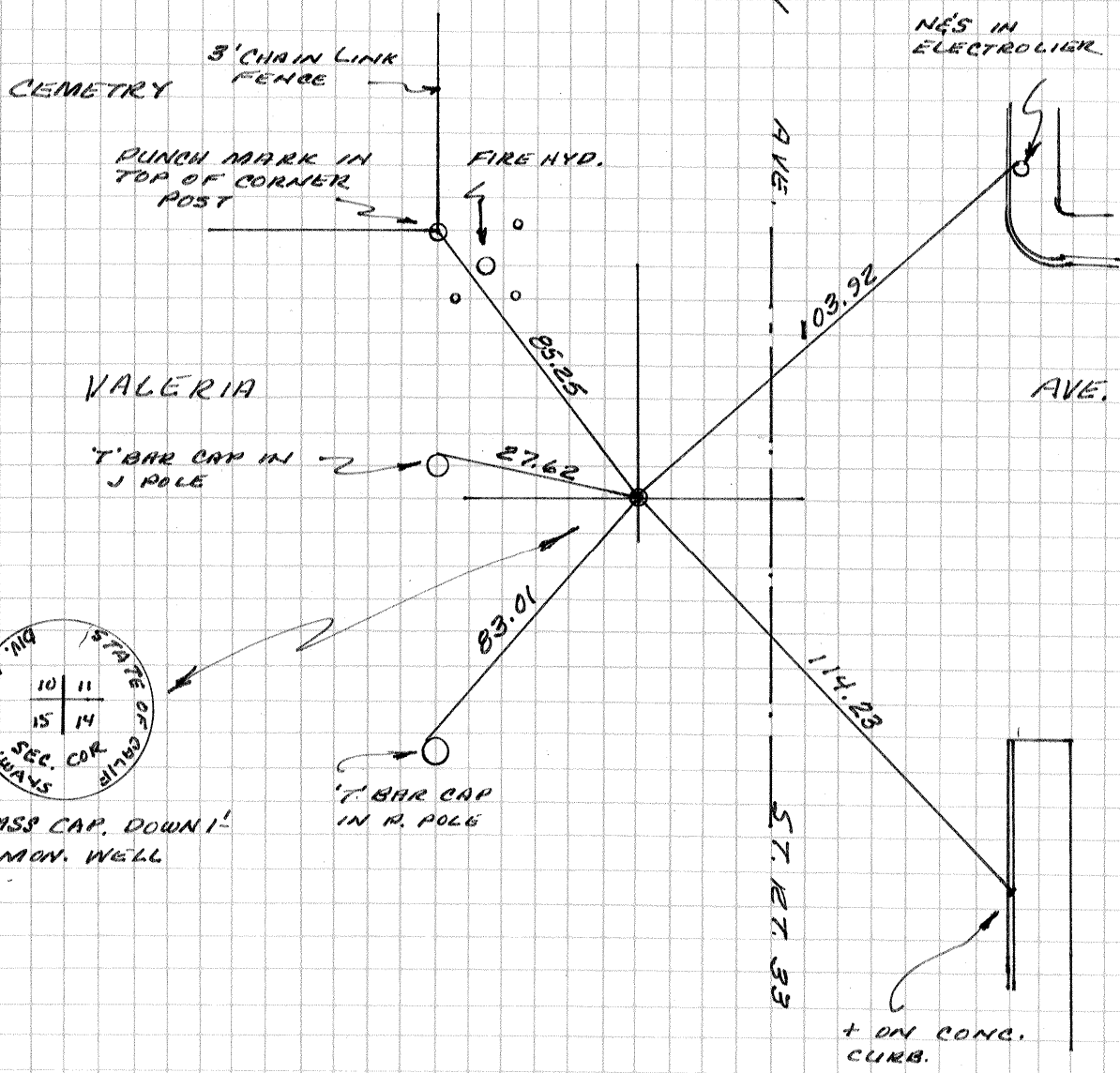
Signed Roy L. Turney Title Deputy Co. Surveyor

County Surveyor's Comment COR. NO. 1782



10 11  
15 14

T. S., R. E.,  
M. D. B. & M.



BRASS CAP. DOWN 1'-  
IN MON. WELL