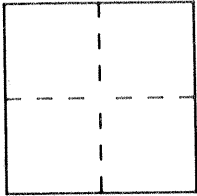


CORNER RECORD

Document Number 1781

City of DOS PALOS County of MERCED, California

Brief Legal Description STA 246+83.68 ELGIN AVE. (ST. RT. 33) IN SECTION 11, T. 11 S. R. 12 E., M. D. BEM



CORNER TYPE

Government Corner Control
Meander Property
Rancho Other
Date of Survey 6-26-90

**COORDINATES
(Optional)**

N. _____
E. _____
Zone _____ Datum _____
Elev. _____

Corner — Left as found Found and tagged Established Reestablished Rebuilt

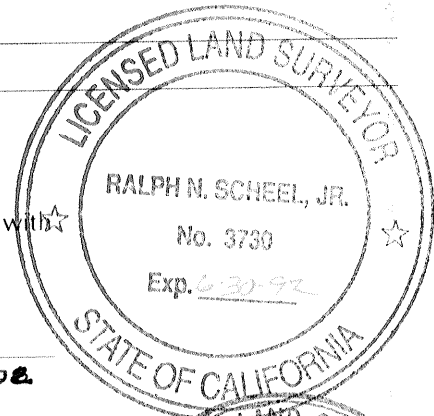
Identification and type of corner found: Evidence used to identify or procedure used to establish or reestablish the corner: FOUND 2 1/2" BRASS DISK STAMPED 246+83.68, DOWN 1' IN A MONUMENT WELL PER PREVIOUS TIES.

A description of the physical condition of the monument as found and as set or reset: MONUMENT IS IN GOOD CONDITION.

SURVEYOR'S STATEMENT

This Corner Record was prepared by me or under my direction in conformance with the Land Surveyors' Act on June 26 1990.

Signed Ralph N. Scheel, Jr. L.S. or R.C.E. Number LS3730
LIC. EXP. 6-30-92



COUNTY SURVEYOR'S STATEMENT

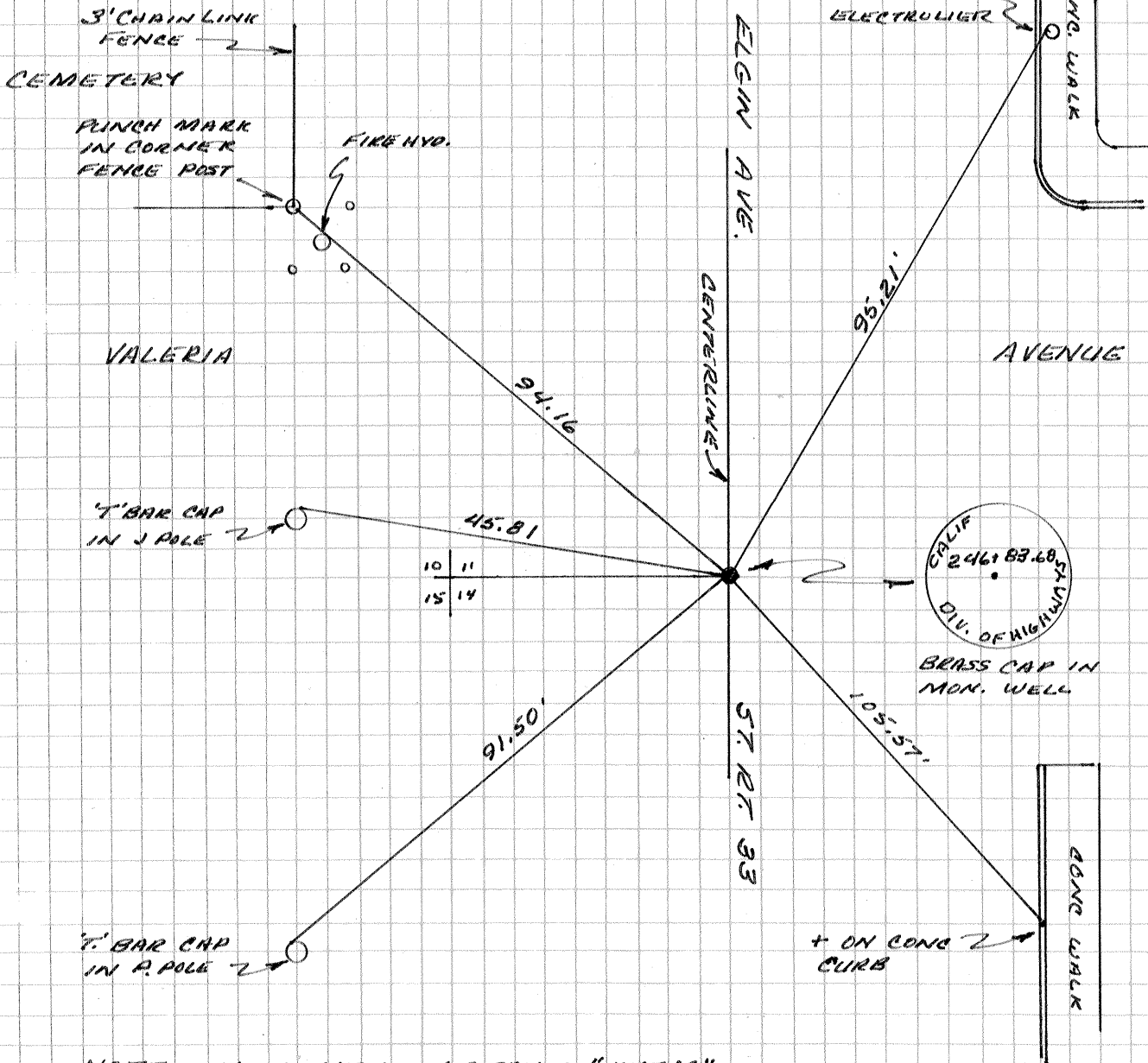
This Corner Record was received August 3 1990 and examined and filed August 3 1990.

Signed Roy L. Turney Title Deputy Co. Surveyor



County Surveyor's Comment COR. N. 1781

STA 246+83.68
 STATE RT. 33
 DOS PALOS



NOTE - MON. WELL CAP SAYS "WATER"