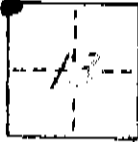


CORNER RECORD

COUNTY OF FRESNO T. 11 S. 16 E. M.D.B.E. MERIDIAN CALIFORNIA

CORNER TYPE: GOV'T. CORNER MEANDER RANCHO CONTROL OTHER

CORNER IDENTIFICATION - DATE OF VISIT APR. 19 1976



NW COR SEC 13
MILLUX and Valeria

CORNER - LEFT AS FOUND FOUND AND TAGGED REESTABLISHED OR LITERATED CORNER REBUILT

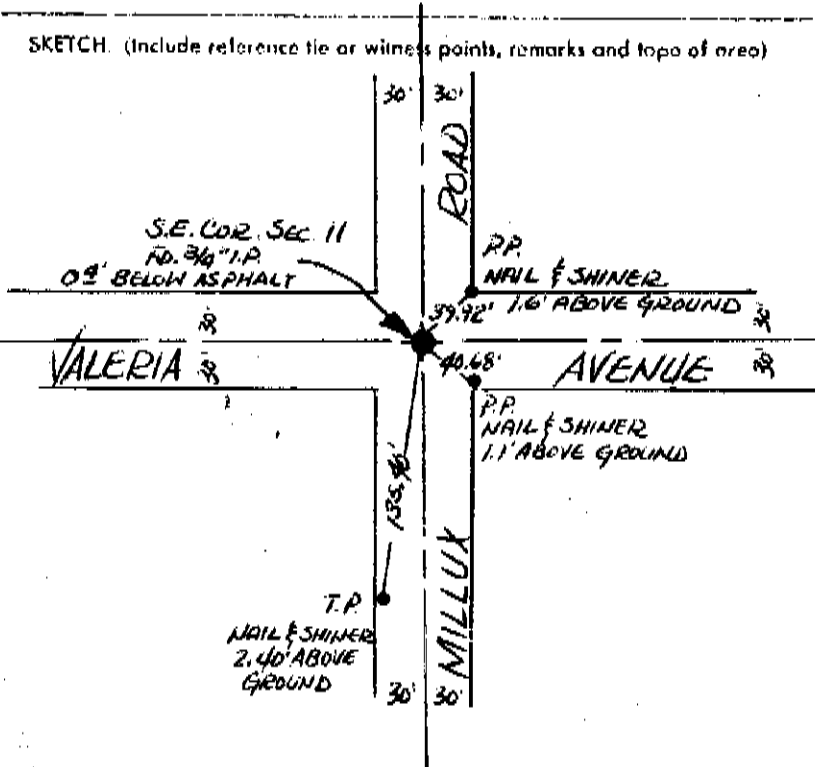
PHYSICAL DESCRIPTION OF CORNER FOUND; EVIDENCE AND METHOD USED TO IDENTIFY OR REESTABLISH

3/4" I.P. 0' BELOW PAVEMENT
TAGGED L.S. 3733

PHYSICAL DESCRIPTION OF MONUMENTS RESULT OR PERPETUATED

CALIFORNIA COORDINATE SYSTEM ORDER: FIRST SECOND THIRD
STATIONS USED NOS (USL & GS) STATE COUNTY OTHER STATION _____ STATION _____
ZONE _____ ELEVATION _____ NORTHINGS (Y) _____ EASTINGS (X) _____

SKETCH. (Include reference tie or witness points, remarks and topo of area)



SURVEYOR'S CERTIFICATE
THIS CORNER RECORD WAS PREPARED BY ME UNDER MY DIRECTION IN CONFORMANCE WITH THE LAND SURVEYORS ACT ON July 10

SIGNED: _____
I.S. or R.C.E. No. _____



COUNTY SURVEYOR'S CERTIFICATE
THE CORNER RECORD WAS RECEIVED Sept. 13 1976
AND EXAMINED AND FILED Oct. 25 1976

BY: _____
TITLE: _____
DOCUMENT No. 00813

STATEMENT ON BACK OF SHEET

YES NO