

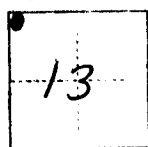
# CORNER RECORD

COUNTY OF FRESNO T. 11 S R. 12 E MDBY MERIDIAN CALIFORNIA

CORNER TYPE: GOV'T. CORNER  MEANDER  RANCHO  CONTROL  OTHER

CORNER IDENTIFICATION — DATE OF VISIT JAN 8 1977

DR PERRY  
E. BOYLE  
B. GARCIA



NW 13 VALERIA & MILLUX

CORNER — LEFT AS FOUND  FOUND AND TAGGED  REESTABLISHED OBLITERATED CORNER  REBUILT

PHYSICAL DESCRIPTION OF CORNER FOUND; EVIDENCE AND METHOD USED TO IDENTIFY OR REESTABLISH  
ROUND A 3/4" IRON PIPE WITH LS. TAB # 3733 6" UNDER ROAD WITH 2, 2.00 SPREADERS. OLD TIES DESCRIBE A SCOTT MCKAY MONT. HERE, WE FOUND NO EVIDENCE OF SUCH

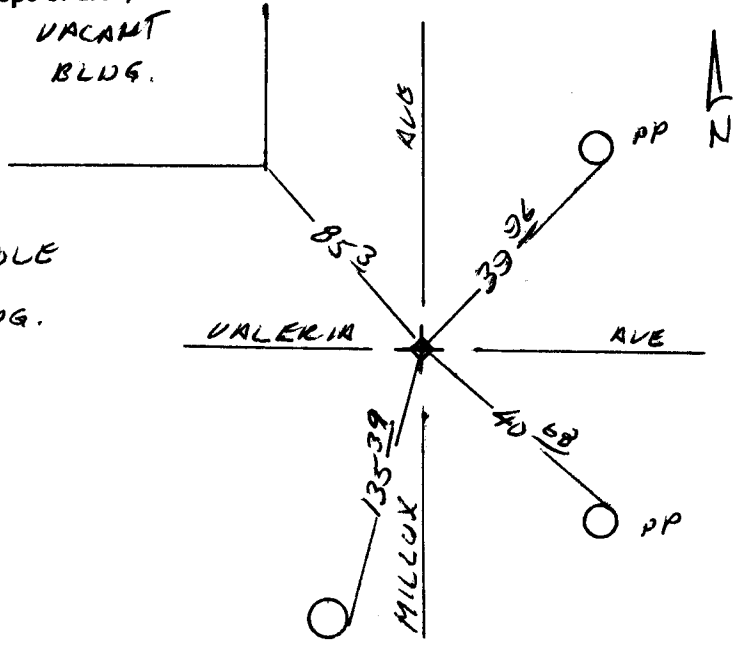
PHYSICAL DESCRIPTION OF MONUMENTS REBUILT OR PERPETUATED

NONE

CALIFORNIA COORDINATE SYSTEM ORDER: FIRST  SECOND  THIRD   
 STATIONS USED: NGS (USC & GS)  STATE  COUNTY  OTHER  STATION \_\_\_\_\_ STATION \_\_\_\_\_  
 ZONE \_\_\_\_\_ ELEVATION \_\_\_\_\_ NORTHINGS (Y) \_\_\_\_\_ EASTINGS (X) \_\_\_\_\_

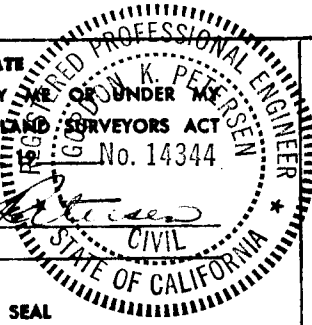
SKETCH: (Include reference tie or witness points, remarks and topo of area)

39 96 SW OF O IN PP  
40 68 NW OF O IN PP  
135 39 NHE OF O IN SERVICE AVE  
853 SE OF CONC BLOCK BLDG.  
27 1/2 W OF PL-N  
290 N OF PL-E&W



**SURVEYOR'S CERTIFICATE**

THIS CORNER RECORD WAS PREPARED BY GORDON K. PETERSEN REGISTERED PROFESSIONAL ENGINEER  
 DIRECTION IN CONFORMANCE WITH THE LAND SURVEYORS ACT  
 ON JANUARY 7, 1977 No. 14344  
 FOR THE COUNTY OF FRESNO  
 SIGNED: Gordon K. Petersen  
 R.C.E. No.: 14344



**COUNTY SURVEYOR'S CERTIFICATE**

THE CORNER RECORD WAS RECEIVED FEB 11, 1977  
 AND EXAMINED AND FILED MAY 27, 1977  
 BY [Signature]  
 TITLE CE III  
 DOCUMENT No. 1086  
 STATEMENT ON BACK OF SHEET YES  NO