

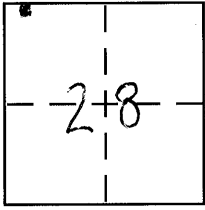
CORNER RECORD

Document Number 1775-M

City of _____

County of MERCED, California

Brief Legal Description PARCEL 1 3 P.M. 1 SEC. 28 10/10



CORNER TYPE

Government Corner Control
Meander Property
Rancho Other
Date of Survey 2-12-09

COORDINATES (Optional)

N. _____
E. _____
Zone _____ NAD27 NAD83
NAD83 Epoch _____
Elev. _____
Vert. Datum: NGVD29 NAVD88
Meas. Units: Metric Imperial

Corner - Left as found Found and tagged Established Reestablished Rebuilt

Identification and type of corner found: Evidence used to identify or procedure used to establish or reestablish the corner:
SEE SKETCH

A description of the physical condition of the monument as found and as set or reset:
SEE SKETCH

SURVEYOR'S STATEMENT

This Corner Record was prepared by me or under my direction in conformance with the Land Surveyor's Act on 2-27-09

Signed [Signature] P.L.S or R.C.E. No. _____



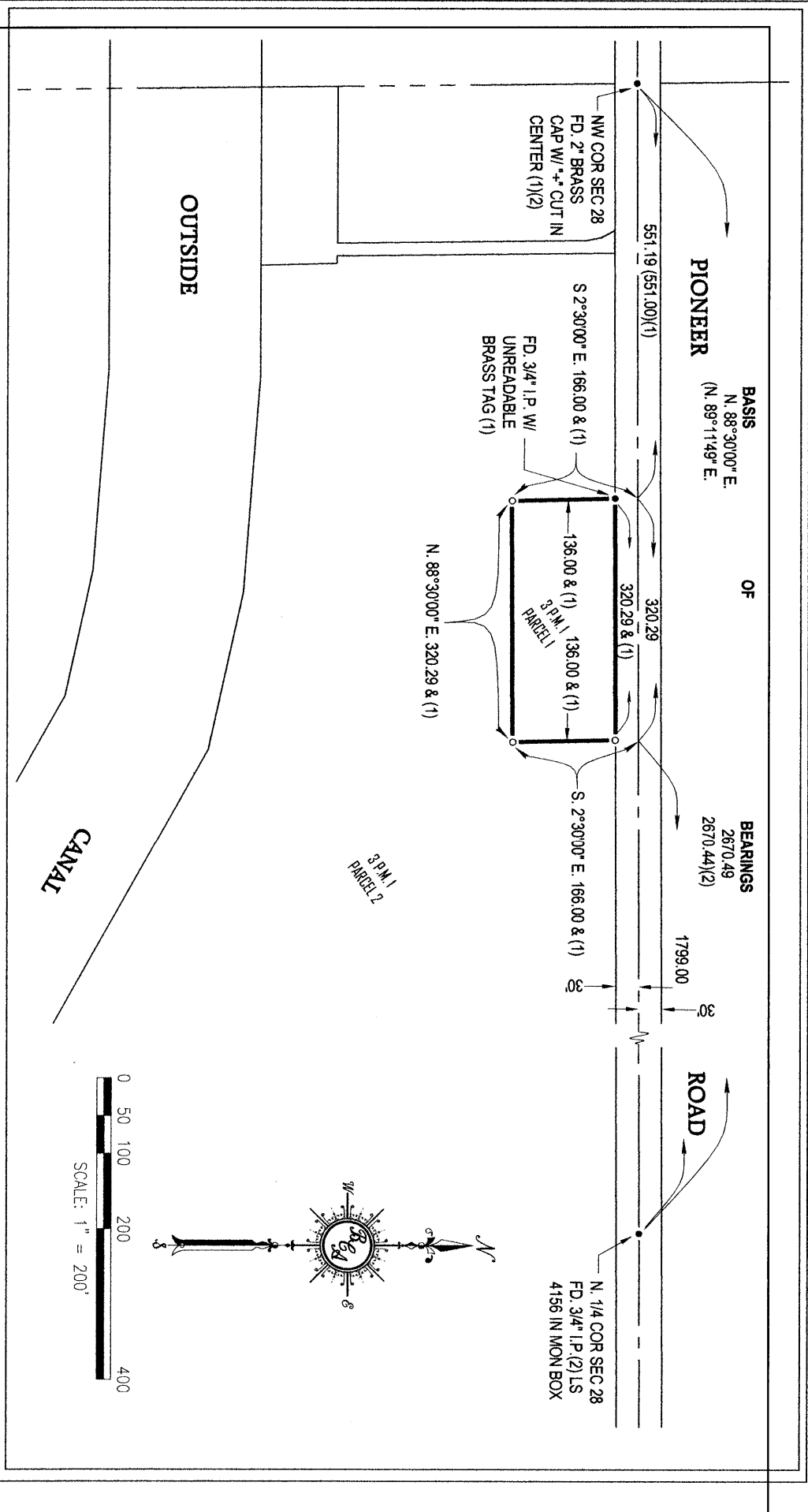
COUNTY SURVEYOR'S STATEMENT

This Corner Record was received March 24, 2009 and examined and filed March 24, 2009

Signed [Signature] P.L.S or ~~R.C.E.~~ No. 4895
Title Dep. County Surveyor



County Surveyor's Comment _____



BASIS OF BEARINGS
 N. 88°30'00" E.
 (N. 89°11'49" E.)

BEARINGS
 2670.49
 2670.44(2)

- LEGEND**
- FOUND AND ACCEPTED MONUMENT AS INDICATED
 - SET 3/4" IRON PIPE, L.S. 4403

BASIS OF BEARINGS
 N. 88°30'00" E. FOR THE CENTERLINE OF PIONEER ROAD AS SHOWN ON THE PARCEL MAP FOR DOMINGOS FREITAS, RECORDED IN VOLUME 3 OF PARCEL MAPS, PAGE 1, MERCED COUNTY RECORDS.

- REFERENCES**
- (1) PARCEL MAP FOR DOMINGOS FREITAS, 3 P.M. 1 M.C.R.
 - (2) RECORD OF SURVEY FOR COUNTRY DEVELOPMENT COMPANY, 14 R.S. 21 M.C.R.

