

CORNER RECORD

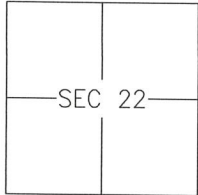
Agency Index 1771-TT

Document Number _____

City of LOS BANOS

County of MERCED, California

Brief Legal Description MONUMENTS FOR LOTS 1 & 2 AS SHOWN ON 11-O.P.-37



T10S/R10E

CORNER TYPE

- Government Corner Control
 Meander Property
 Rancho Other

Date of Survey 2018-10-04

COORDINATES (Optional)

- N. _____ E. _____
 Elevation _____
 Units Metric U.S. Survey Foot
 Horizontal Datum _____
 Zone _____ Epoch Date _____
 Vertical Datum: _____
 Complies with Public Resources Code §§8801-8819
 Complies with Public Resources Code §§8890-8902

PLS Act Ref.: 8765(d) 8771 8773 Other: _____

Corner/Monument: Left as found Established Rebuilt Pre-Construction
 Found and tagged Reestablished Referenced Post-Construction

Narrative of corner identified and monument as found and set or reset:
 See sheet #2 for description(s):

SURVEYOR'S STATEMENT

This Corner Record was prepared by me or under my direction in conformance with
 the Land Surveyor's Act on 11 FEBRUARY, 2019.
 Signed [Signature] P.L.S. or R.C.E. No.: 8040

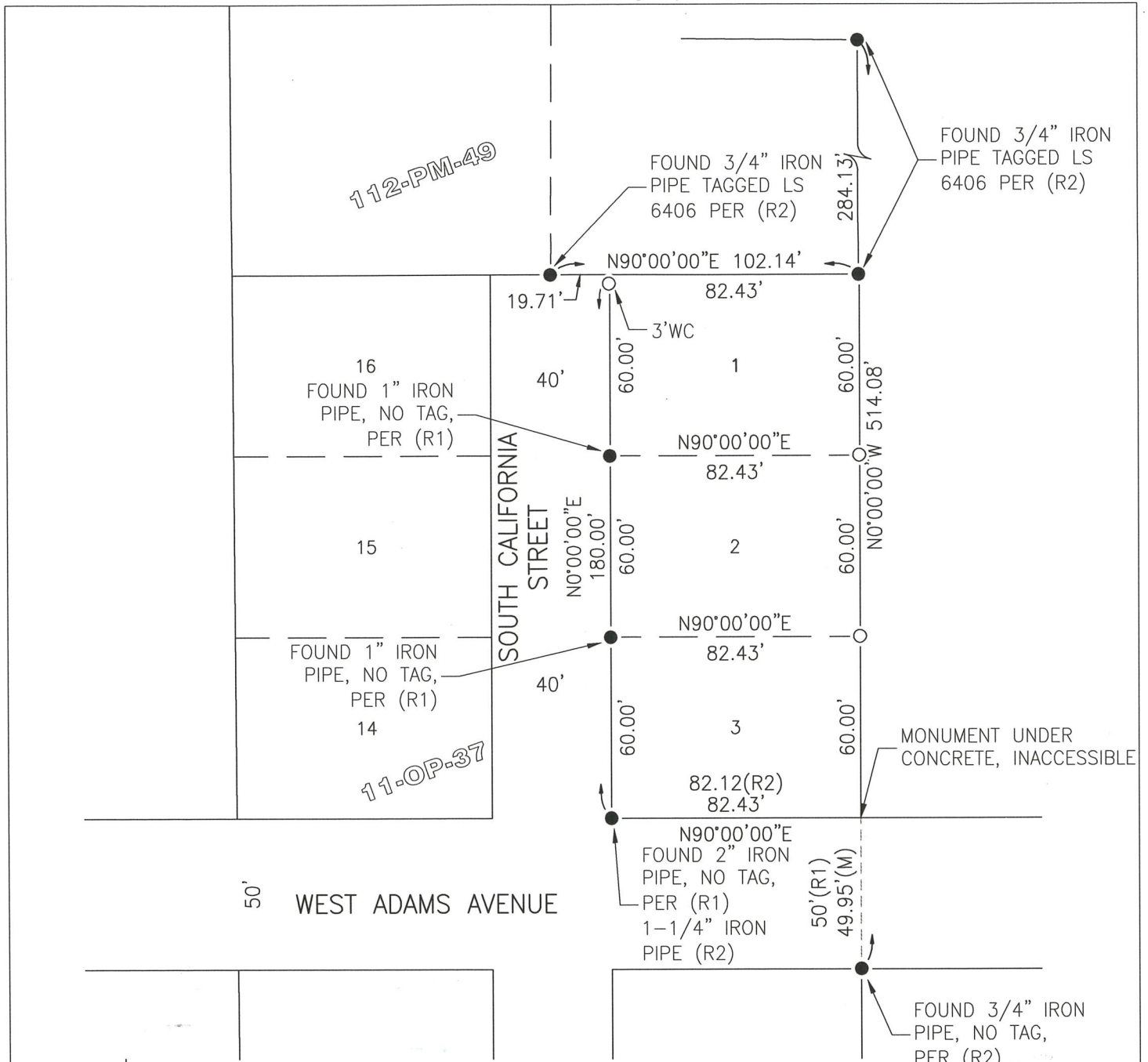


COUNTY SURVEYOR'S STATEMENT

This Corner Record was received FEBRUARY 14, 2019 and examined
 and filed FEBRUARY 15, 2019.
 Signed Zach T. Janz P.L.S. or R.C.E. No.: 8664
 Title COUNTY SURVEYOR



County Surveyor's Comment _____



LEGEND

- FOUND MONUMENT AS NOTED.
- SET 3/4" IRON PIPE TAGGED LS 8040
- SFN SEARCHED FOUND NOTHING
- WC WITNESS CORNER SET ALONG LINE AT DISTANCE NOTED

REFERENCES

- (R1) VOLUME 11 OF OFFICIAL PLATS, PAGES 37, MERCED COUNTY RECORDS
- (R2) VOLUME 112 OF PARCEL MAPS, PAGES 49-51, MERCED COUNTY RECORDS

SCALE  1" = 50'