

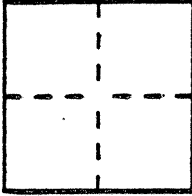
# CORNER RECORD

Document Number 1771-MM

City of Los Banos

County of Merced, California

Brief Legal Description Lot corner on south side of Pacheco Blvd (State Hwy 152) approx 255 Ft west of Nevada Ave. centerline, in SEC 22 T10S R10E MDM



### CORNER TYPE

- Government Corner
- Meander
- Rancho
- Date of Survey 3-17-96
- Control
- Property
- Other

### COORDINATES (Optional)

N. \_\_\_\_\_  
 E. \_\_\_\_\_  
 Zone \_\_\_\_\_ Datum \_\_\_\_\_  
 Elev. \_\_\_\_\_

Corner — Left as found  Found and tagged  Established  Reestablished  Rebuilt

Identification and type of corner found: Evidence used to identify or procedure used to establish or reestablish the corner:

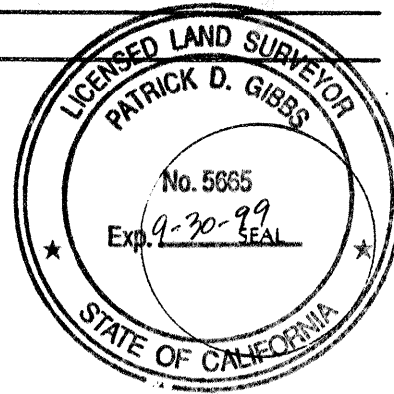
Found 3/4" iron pipe w/plastic plug (LS 4403), see 73/PM/8  
Merced County Records.

A description of the physical condition of the monument as found and as set or reset: Good

### SURVEYOR'S STATEMENT

This Corner Record was prepared by me or under my direction in conformance with the Land Surveyors' Act on 3-13 1996.

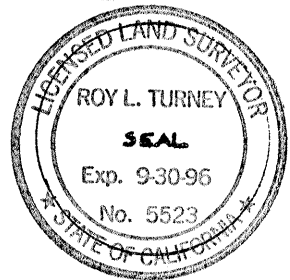
Signed Patrick D. Gibbs LS. or R.C.E. Number LS 5665



### COUNTY SURVEYOR'S STATEMENT

This Corner Record was received MAY 1996 and examined and filed MAY 22 1996.

Signed Roy L. Turney Title Dep Co. SUR



County Surveyor's Comment \_\_\_\_\_

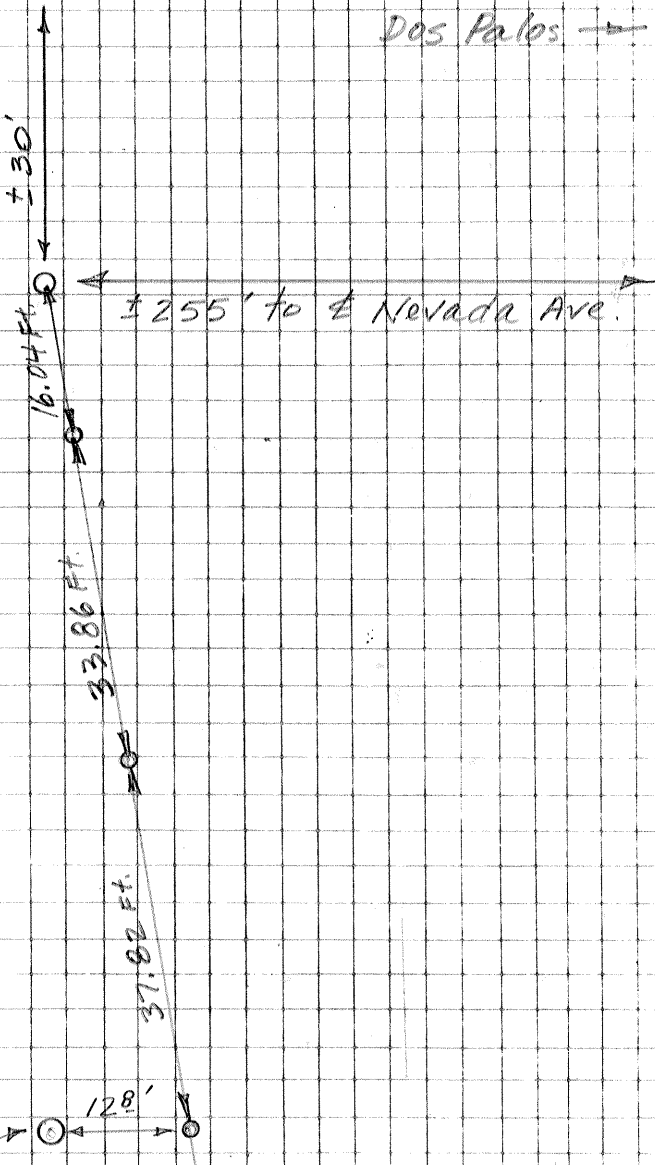


SEC 22 TIOS RIDE MDM.

No Scale  
P. Gibbs 3-13-96



Fd 3/4" Iron pipe  
w/plas. plug (LS4403)  
see 73/PM/8  
MER. CO. REC.



Set PK & Shiner RP'S

The ties shown hereon are for the purpose of perpetuating the monumentation currently existing. No attempt was made to determine the validity of the monuments or their proper location in relation to local boundary lines in the area.