

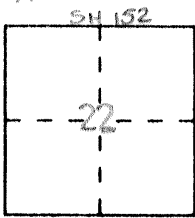
CORNER RECORD

Document Number 1771 MM

City of LOS BANOS

County of MERCED, California

Brief Legal Description LOT CORNER SOUTH SIDE PACHECO BLVD. (STATE RTE 152)
appx. 255 feet west of So. Nevada Ave. centerline, in Sec. 22, T10S, R10E, MDM



CORNER TYPE

Government Corner Control
Meander Property
Rancho Other
Date of Survey 6/03/1998

**COORDINATES
(Optional)**

N. _____
E. _____
Zone _____ Datum _____
Elev. _____

Corner — Left as found Found and tagged Established Reestablished Rebuilt

Identification and type of corner found: Evidence used to identify or procedure used to establish or reestablish the corner: FOUND & USED REFERENCE POINTS SHOWN ON 1771-MM CR MCR. ORIGINAL MONUMENT WAS DESTROYED BY ROAD CONSTRUCTION.

A description of the physical condition of the monument as found and as set or reset: Set 1" IP with yellow plastic plug "CALTRANS" (down 0.04 feet) in A/C pavement.

SURVEYOR'S STATEMENT

This Corner Record was prepared by me or under my direction in conformance with the Land Surveyors' Act on July 8th 1998.

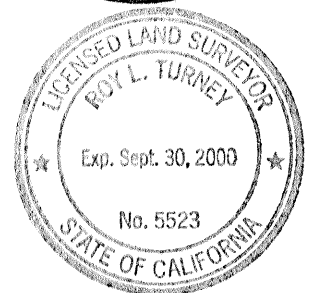
Signed Robin L. Wickline L.S. or R.C.E. Number 7026
Expires 6/30/02



COUNTY SURVEYOR'S STATEMENT

This Corner Record was received 7-20-98 1998 and examined and filed JULY 27 1998.

Signed Roy L. Turney Title DEP. CO. SUR.



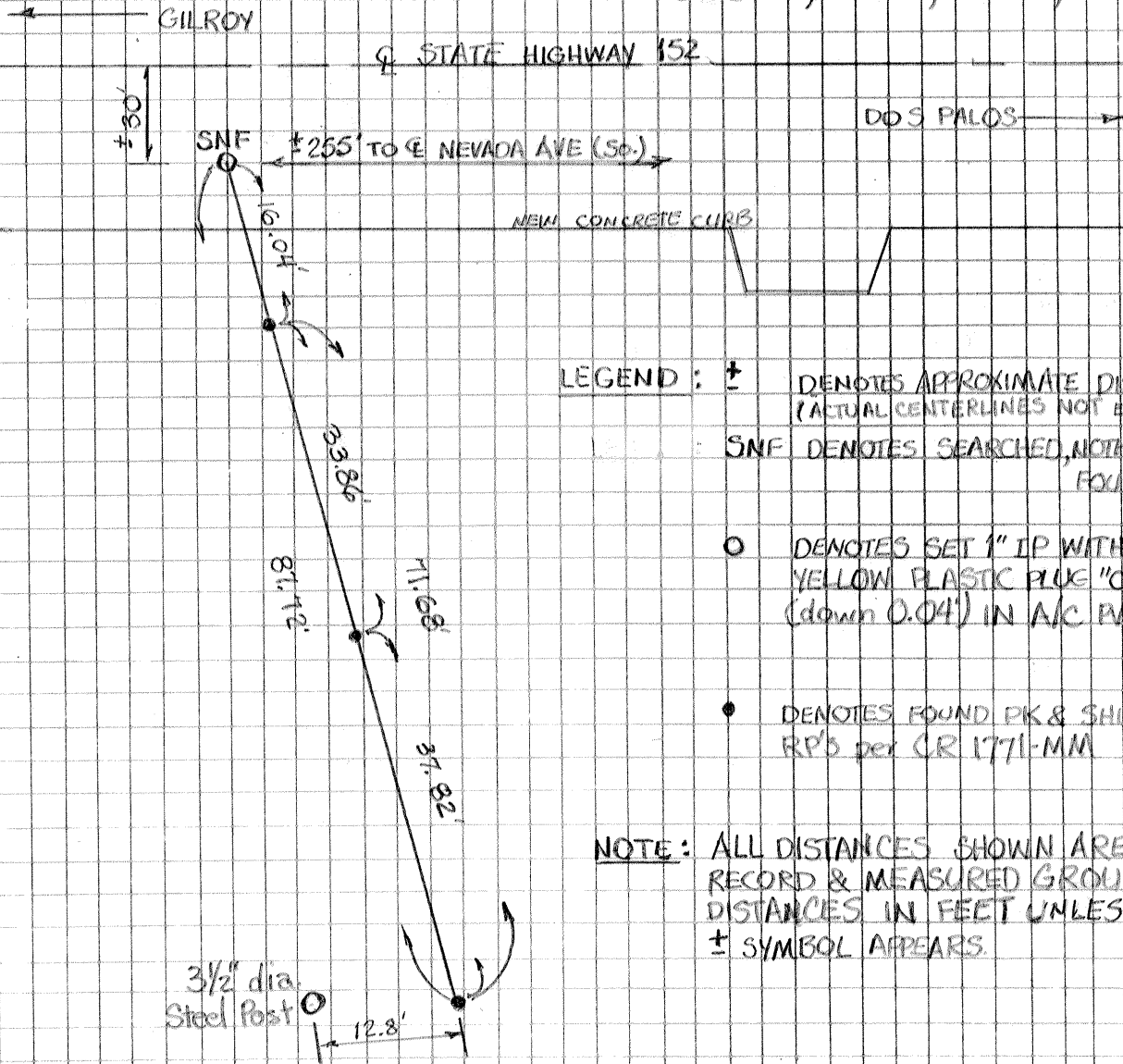
County Surveyor's Comment _____

SR 980219

REF: CORNER RECORD 1771-MM, dated May 22, 1996
73 PM 8 MCR



NO SCALE
CITY OF LOS BANOS
SEC. 22, T10S, R10E, MDM



- LEGEND :
- ± DENOTES APPROXIMATE DISTANCE (ACTUAL CENTERLINES NOT ESTABLISHED)
 - SNF DENOTES SEARCHED, NOTHING FOUND
 - DENOTES SET 1" IP WITH YELLOW PLASTIC PLUG "CALTRANS" (down 0.04") IN A/C PAVT.
 - DENOTES FOUND PK & SHINER RP'S per CR 1771-MM

NOTE: ALL DISTANCES SHOWN ARE RECORD & MEASURED GROUND DISTANCES IN FEET UNLESS ± SYMBOL APPEARS.