

CORNER RECORD

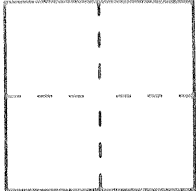
Document Number 1771 K.

City of LOS BANOS

County of MERCED California

Brief Legal Description S.W. CORNER OF INTERSECTION OF PARADISE LANE & ARHECO BLVD.

SECTION 22, T10S, R10E, MDM



CORNER TYPE

- Government Corner [] Control []
Meander [] Property [x]
Rancho [] Other []
Date of Survey 3-15-93

COORDINATES

(Optional)

N. 202951.0
E. 1895484.2
Zone 3 Datum 27'
Elev.

Corner - Left as found [x] Found and tagged [] Established [] Reestablished [] Rebuilt []

Identification and type of corner found: Evidence used to identify or procedure used to establish or reestablish the corner: 3/4" I.D.I. Pipe, NO TAG, REF. 12/0P/27

A description of the physical condition of the monument as found and as set or reset: Pipe found in semi-corroded condition, intact and stable - TO BE destroyed by construction

SURVEYOR'S STATEMENT

This Corner Record was prepared by me or under my direction in conformance with the Land Surveyors' Act on 3-15 1993.

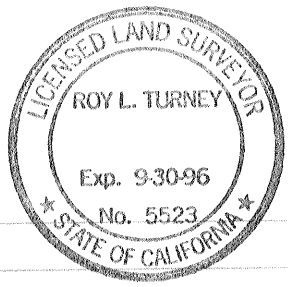
Signed Ralph Scheel L.S. or R.C.E. Number 3730
PARTY CHIEF, CALTRANS License Expiration Date



COUNTY SURVEYOR'S STATEMENT

This Corner Record was received 2-23 1994 and examined and filed 2-25 1994.

Signed Ray Turney Title DEP. CO. SUR.

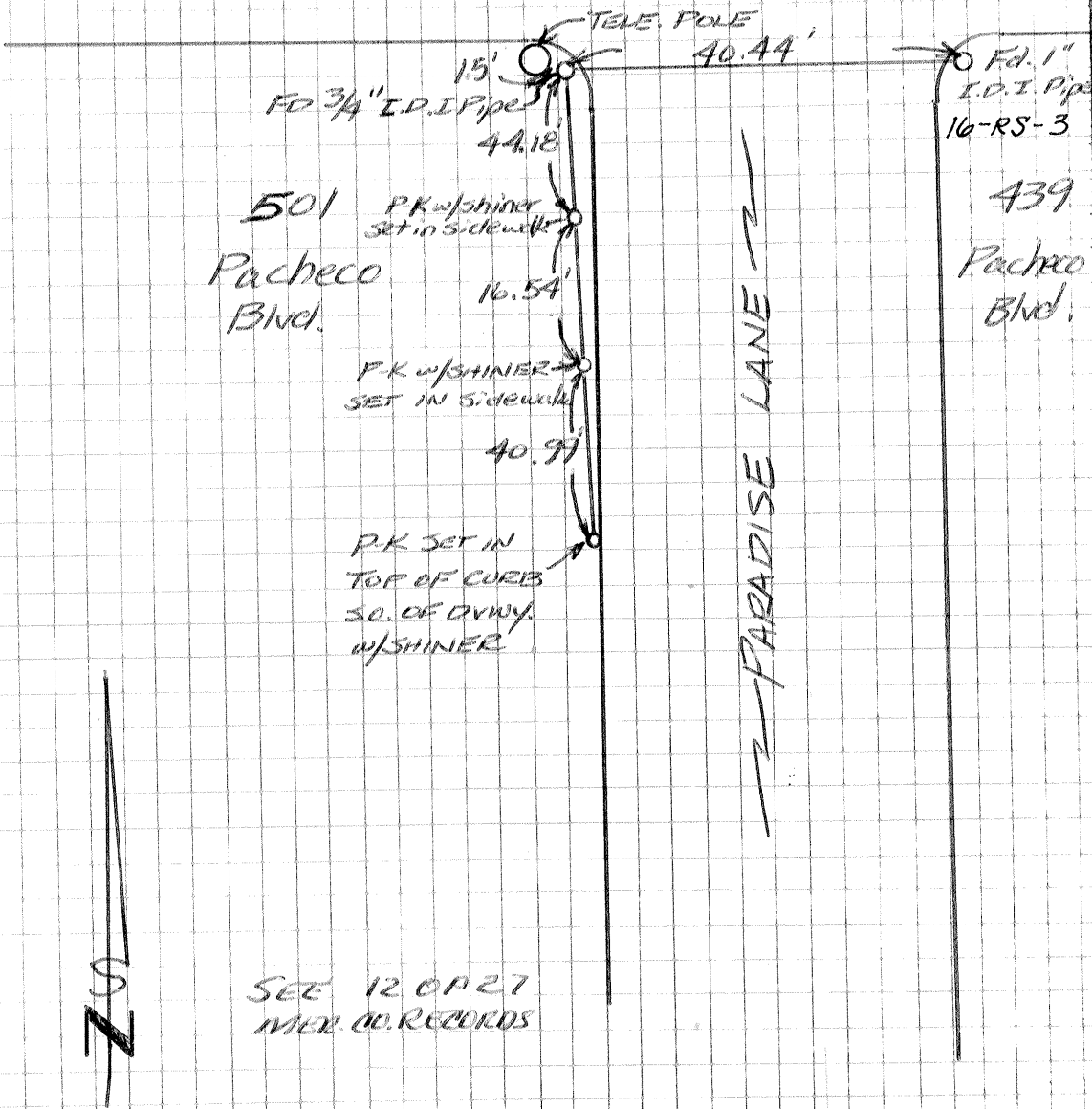


County Surveyor's Comment

SECTION 22
T10S, R10E, MDM

ST. RTE 152

PACHECO BLVD.



SEE 120127
MER. CO. RECORDS

The lines shown hereon are for the purpose of perpetuating the monumentation currently on file. No attempt was made to determine the validity of the monuments or their proper location in relation to legal boundary lines in the area.