

# CORNER RECORD

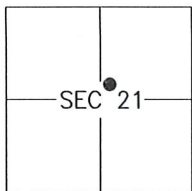
AGENCY INDEX 1769-W

Document Number \_\_\_\_\_

City of LOS BANOS

County of MERCED, California

Brief Legal Description MONUMENTS ON LOT 17, PER 79-OP-16, M.C.R.



T10S/R10E

### CORNER TYPE

- Government Corner  Control   
 Meander  Property   
 Rancho  Other

Date of Survey 2019-11-13

### COORDINATES (Optional)

- N. \_\_\_\_\_ E. \_\_\_\_\_  
 Elevation \_\_\_\_\_  
 Units Metric  U.S. Survey Foot   
 Horizontal Datum \_\_\_\_\_  
 Zone \_\_\_\_\_ Epoch Date \_\_\_\_\_  
 Vertical Datum: \_\_\_\_\_  
 Complies with Public Resources Code §§8801-8819  
 Complies with Public Resources Code §§8890-8902

PLS Act Ref.:  8765(d)  8771  8773 Other: \_\_\_\_\_

Corner/Monument:  Left as found  Established  Rebuilt  Pre-Construction  
 Found and tagged  Reestablished  Referenced  Post-Construction

Narrative of corner identified and monument as found and set or reset:

See sheet #2 for description(s):

SET MONUMENTS AS NOTED ON SHEET 2.

### SURVEYOR'S STATEMENT

This Corner Record was prepared by me or under my direction in conformance with the Professional Land Surveyor's Act on 4 December, 2019.

Signed [Signature] P.L.S. or R.C.E. No.: 8040



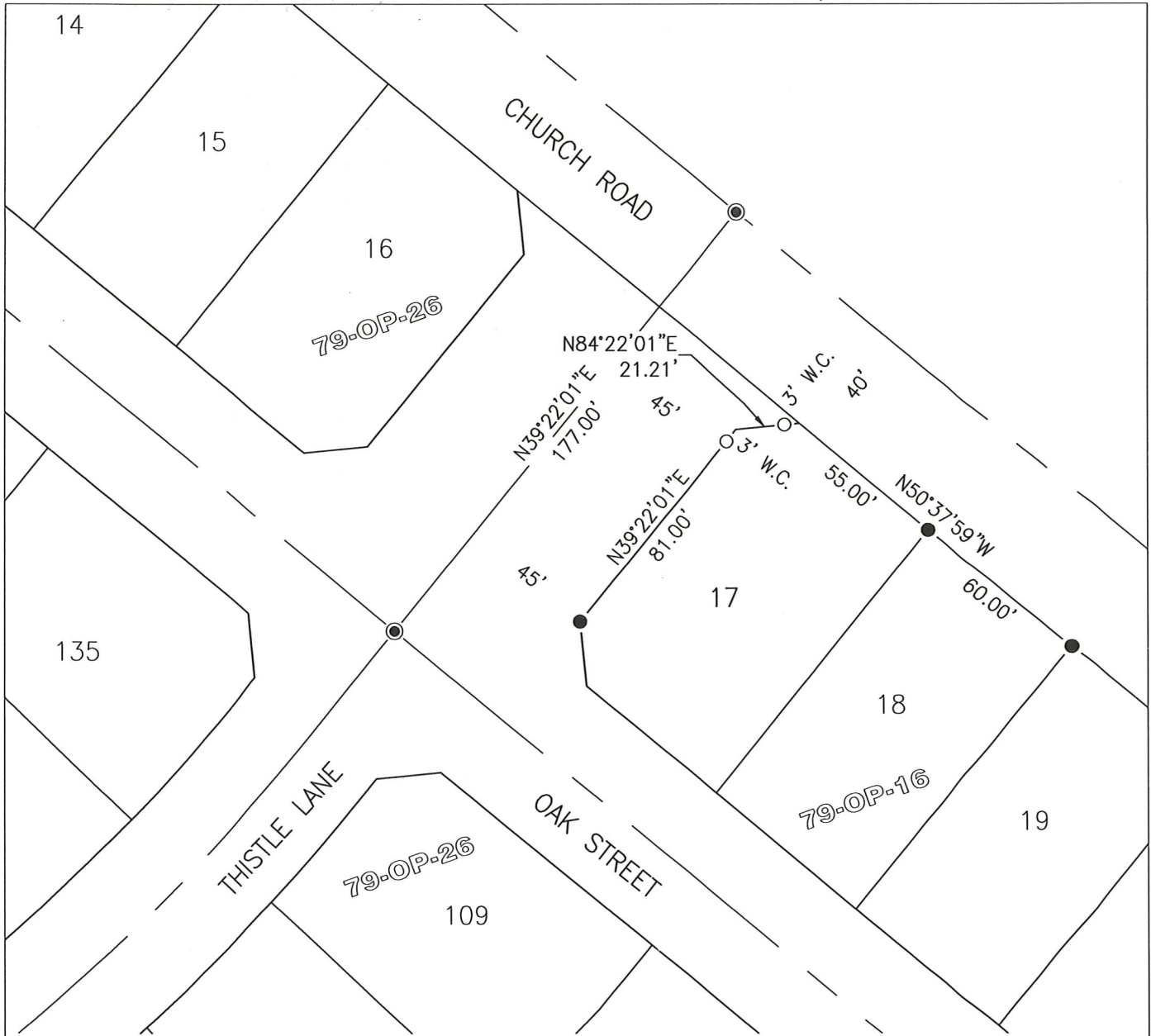
### COUNTY SURVEYOR'S STATEMENT

This Corner Record was received DECEMBER 13, 2019 and examined and filed DECEMBER 13, 2019.

Signed Zachary T. Janz P.L.S. or R.C.E. No.: 8664  
 Title COUNTY SURVEYOR

County Surveyor's Comment \_\_\_\_\_





LEGEND

- FOUND 3/4" IRON PIPE TAGGED RCE 29851 PER VOLUME 79 OF OFFICIAL PLATS, PAGES 16-25 M.C.R.
- SET 3/4" IRON PIPE WITH TAG STAMPED "LS 8040"
- ⊙ FOUND 2" BRASS DISK IN CONCRETE IN MONUMENT WELL STAMPED RCE 29851 PER VOLUME 79 OF OFFICIAL PLATS, PAGES 16-25 M.C.R.
- O.P. OFFICIAL PLATS
- M.C.R. MERCED COUNTY RECORDS
- W.C. WITNESS CORNER AT DISTANCE NOTED

