

CORNER RECORD

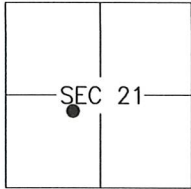
AGENCY INDEX 1769-V

Document Number _____

City of LOS BANOS

County of MERCED, California

Brief Legal Description MONUMENTS ON LOTS 120-123, PER 79-OP-26, M.C.R.



CORNER TYPE

- Government Corner Control
 Meander Property
 Rancho Other

Date of Survey 2019-11-13

COORDINATES (Optional)

- N. _____ E. _____
 Elevation _____
 Units Metric U.S. Survey Foot
 Horizontal Datum _____
 Zone _____ Epoch Date _____
 Vertical Datum: _____
 Complies with Public Resources Code §§8801-8819
 Complies with Public Resources Code §§8890-8902

PLS Act Ref.: 8765(d) 8771 8773 Other: _____

Corner/Monument: Left as found Established Rebuilt Pre-Construction
 Found and tagged Reestablished Referenced Post-Construction

Narrative of corner identified and monument as found and set or reset:

See sheet #2 for description(s):

SET MONUMENTS AS NOTED ON SHEET 2.

SURVEYOR'S STATEMENT

This Corner Record was prepared by me or under my direction in conformance with the Professional Land Surveyor's Act on 4 December, 2019.

Signed [Signature] P.L.S. or R.C.E. No.: 8040



COUNTY SURVEYOR'S STATEMENT

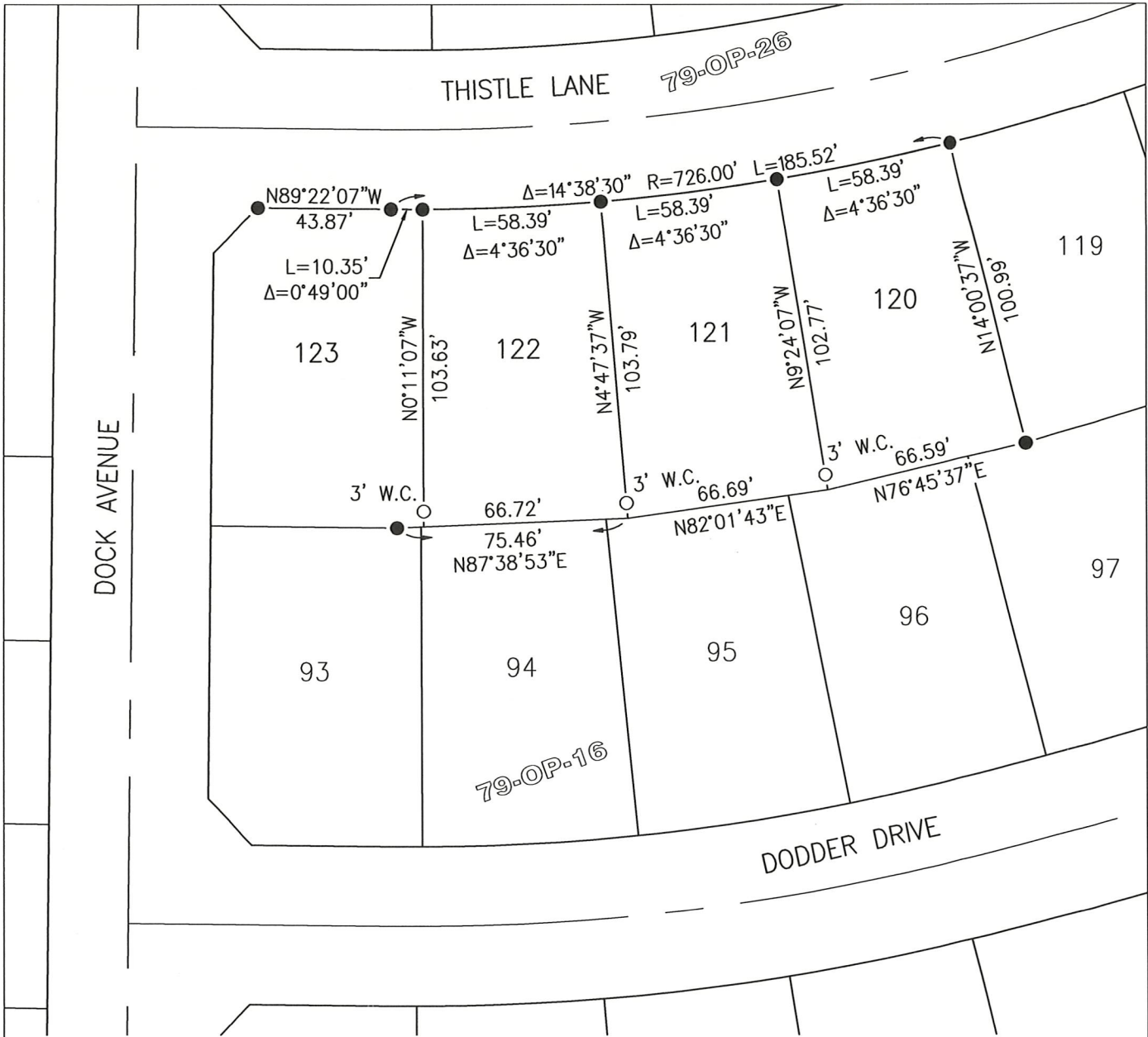
This Corner Record was received DECEMBER 13, 2019 and examined and filed DECEMBER 13, 2019.

Signed Zach T. Janz P.L.S. or R.C.E. No.: 8664

Title COUNTY SURVEYOR

County Surveyor's Comment





LEGEND

- FOUND 3/4" IRON PIPE TAGGED RCE 29851 PER VOLUME 79 OF OFFICIAL PLATS, PAGES 26-31 M.C.R.
- SET 3/4" IRON PIPE WITH TAG STAMPED "LS 8040"
- O.P. OFFICIAL PLATS
- M.C.R. MERCED COUNTY RECORDS
- W.C. WITNESS CORNER AT DISTANCE NOTED

