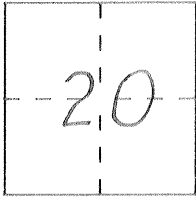


CORNER RECORD

Document Number #2421 & #1766

City of _____ County of MERCED, California

Brief Legal Description PORTION OF No. 1/2 SEC. 20, T12S, R11E MDB&M



CORNER TYPE

COORDINATES (Optional)

Government Corner [X] Control [X]
Meander [] Property []
Rancho [] Other []
Date of Survey JUNE 6, 1996

N. _____
E. _____
Zone _____ Datum _____
Elev. _____

Corner — Left as found [X] Found and tagged [] Established [] Reestablished [] Rebuilt []

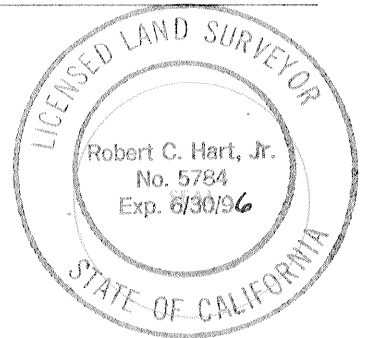
Identification and type of corner found: Evidence used to identify or procedure used to establish or reestablish the corner:
SEE SKETCH ON REVERSE

A description of the physical condition of the monument as found and as set or reset:
SEE SKETCH ON REVERSE

SURVEYOR'S STATEMENT

This Corner Record was prepared by me or under my direction in conformance with the Land Surveyors' Act on JUNE 17 1996.

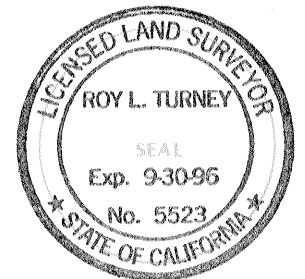
Signed Robert C. Hart, Jr. L.S. or R.C.E. Number 5784



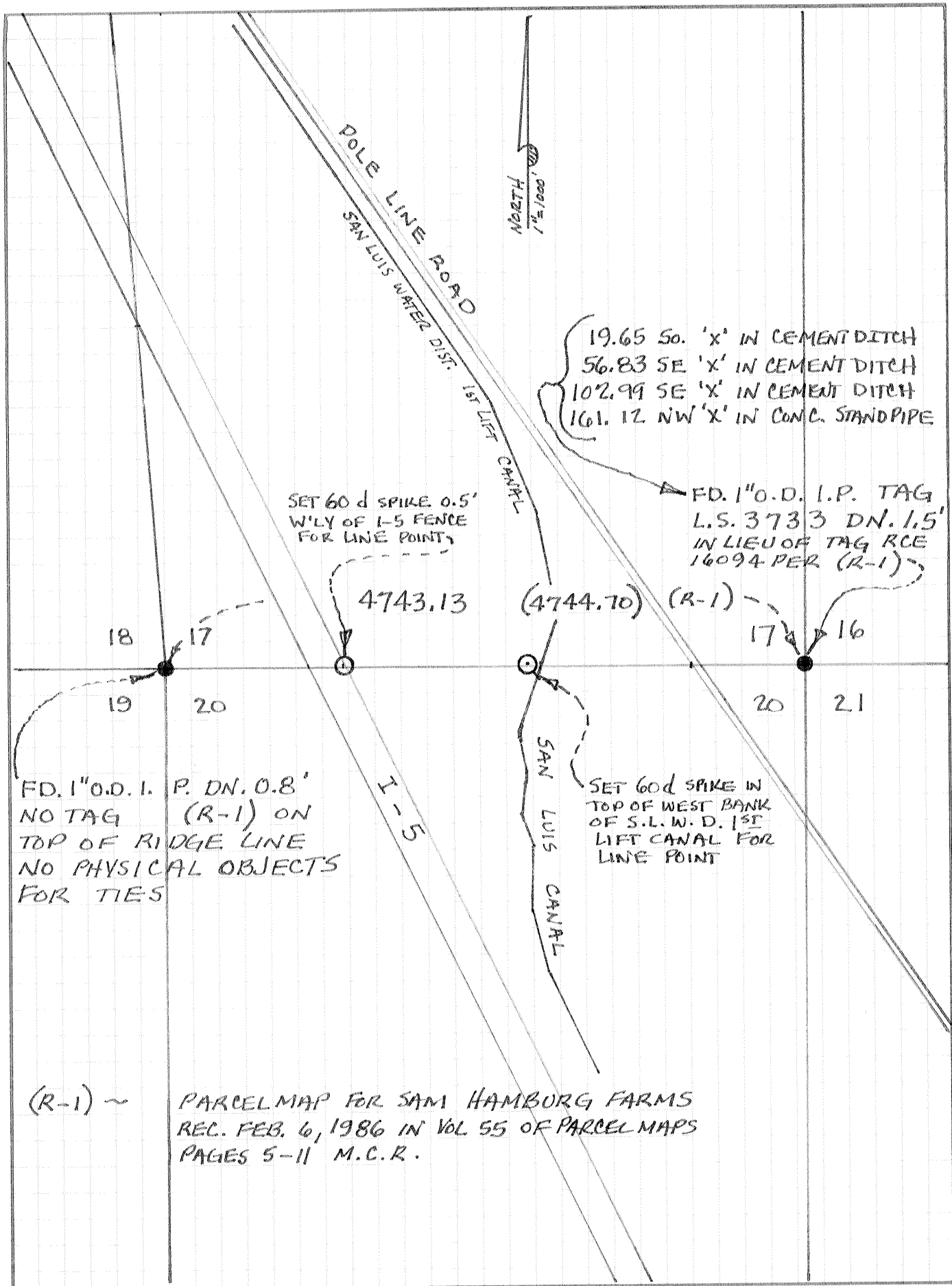
COUNTY SURVEYOR'S STATEMENT

This Corner Record was received 6-18 1996 and examined and filed 7-8 1996.

Signed Roy L. Turney Title DEP. CO. SUR.



County Surveyor's Comment _____



(R-1) ~

PARCELMAP FOR SAM HAMBURG FARMS
 REC. FEB. 6, 1986 IN VOL 55 OF PARCELMAPS
 PAGES 5-11 M.C.R.