

1763

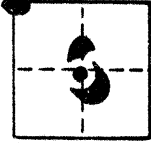
(NOTE S.W. COR SET 31, 13/10)

CORNER RECORD

COUNTY OF MERCED T. 14 SOUTH R. 10 EAST MT. DIABLO MERIDIAN CALIFORNIA

CORNER TYPE: GOVT. CORNER MEANDER RANCHO CONTROL OTHER

CORNER IDENTIFICATION - DATE OF VISIT JULY 22 1980



N. W. COR., SECT. 6, T14S, R10E, M.D.M.

ALSO N. W. COR. TOWNSHIP 14 SOUTH, RANGE 10 EAST, M.D.M.

CORNER - LEFT AS FOUND FOUND AND TAGGED REESTABLISHED OBLITERATED CORNER REBUILT

PHYSICAL DESCRIPTION OF CORNER FOUND; EVIDENCE AND METHOD USED TO IDENTIFY OR REESTABLISH

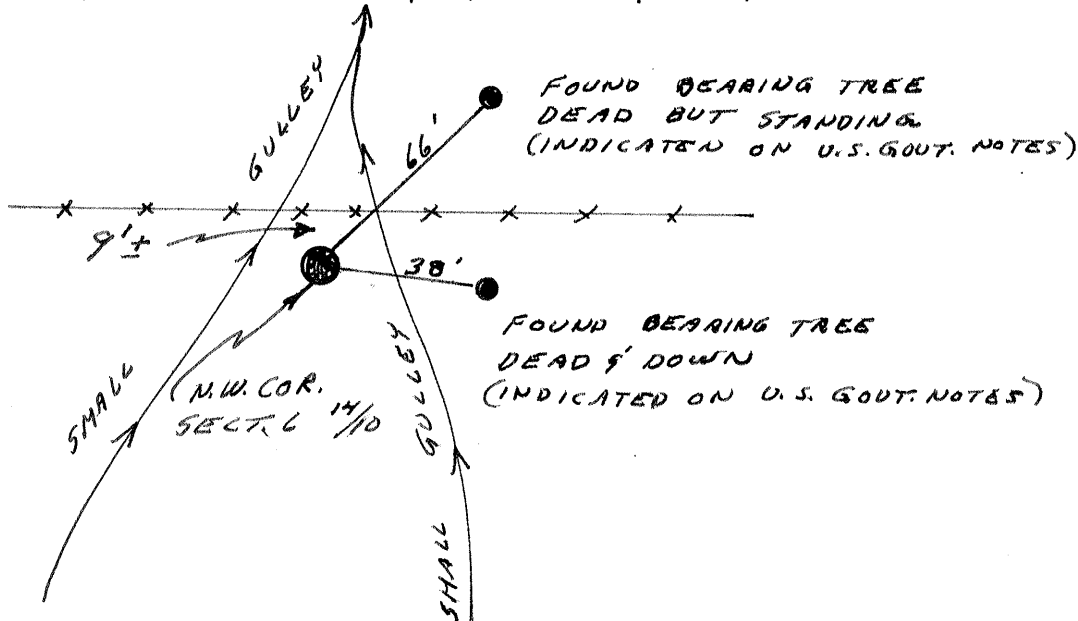
FOUND MOUND OF STONE WITH DECAYED 6"X6" WOOD IN THE CENTER.

PHYSICAL DESCRIPTION OF MONUMENTS REBUILT OR PERPETUATED

SET 1" O.D. X 28" GALVANIZED IRON PIPE TAGGED C.S. 4156 IN THE CENTER OF THE DECAYED 6"X6"

CALIFORNIA COORDINATE SYSTEM ORDER: FIRST SECOND THIRD
STATIONS USED: MGS (USC & GS) STATE COUNTY OTHER STATION _____ STATION _____
ZONE _____ ELEVATION _____ NORTHINGS (Y) _____ EASTINGS (X) _____

SKETCH: (Include reference tie or witness points, remarks and topo of area)



SURVEYOR'S CERTIFICATE
 THIS CORNER RECORD WAS PREPARED BY ME OR UNDER MY DIRECTION IN CONFORMANCE WITH THE LAND SURVEYORS ACT
 L.S. No. 4156 Nov 17 1980
 SIGNED: Johnny E. Davis
 L.S. or P.C. No. 4156

SEAL

COUNTY SURVEYOR'S CERTIFICATE

THE CORNER RECORD WAS RECEIVED _____ 19____
 AND EXAMINED AND FILED _____ 19____
 BY: _____
 TITLE: _____

DOCUMENT No. 1763

STATEMENT ON BACK OF SHEET YES NO