

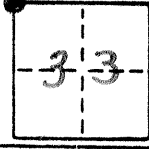
1760

CORNER RECORD

COUNTY OF MERCED T. 13 SOUTH R. 10 EAST MT DIABLO MERIDIAN CALIFORNIA

CORNER TYPE: GOVT. CORNER MEANDER RANCHO CONTROL OTHER

CORNER IDENTIFICATION - DATE OF VISIT JUNE 26 19 80



N.W. COR., SECT. 33, T13S, R10E, H.D.B.F.M.

CORNER - LEFT AS FOUND FOUND AND TAGGED REESTABLISHED OBLITERATED CORNER REBUILT

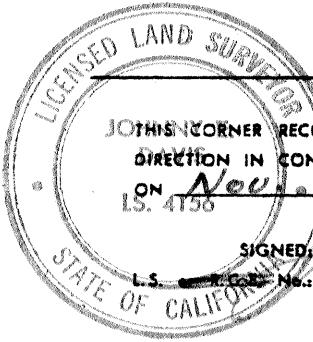
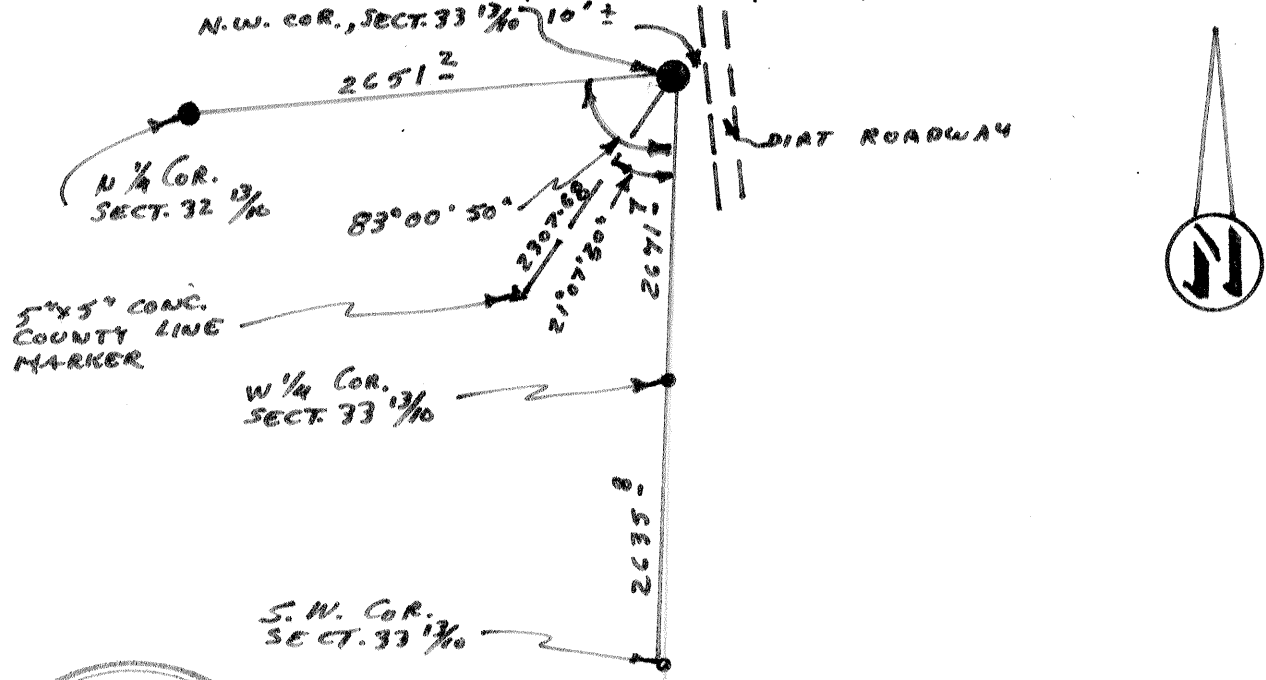
PHYSICAL DESCRIPTION OF CORNER FOUND; EVIDENCE AND METHOD USED TO IDENTIFY OR REESTABLISH

SCOTT McKAY MONUMENT: 6" IRON PLATE ON 4" DIA. IRON PIPE

PHYSICAL DESCRIPTION OF MONUMENTS REBUILT OR PERPETUATED

CALIFORNIA COORDINATE SYSTEM ORDER: FIRST SECOND THIRD
STATIONS USED: NGS (USC & GS) STATE COUNTY OTHER STATION _____ STATION _____
ZONE _____ ELEVATION _____ NORTHINGS (Y) _____ EASTINGS (X) _____

SKETCH: (Include reference tie or witness points, remarks and topo of area)



SURVEYOR'S CERTIFICATE
THIS CORNER RECORD WAS PREPARED BY ME OR UNDER MY DIRECTION IN CONFORMANCE WITH THE LAND SURVEYORS ACT
ON Nov. 14 19 80
L.S. 4756
SIGNED: Johnny E. Davis
L.S. License No.: 4156

SEAL

COUNTY SURVEYOR'S CERTIFICATE
THE CORNER RECORD WAS RECEIVED _____ 19_____
AND EXAMINED AND FILED _____ 19_____
BY: _____
TITLE: _____

DOCUMENT No. 1760

STATEMENT ON BACK OF SHEET YES NO