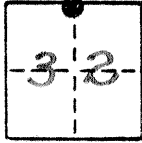


No 1760 1

CORNER RECORD

COUNTY OF MERCED T. 13 SOUTH R. 10 EAST MT. DIABLO MERIDIAN CALIFORNIA
 CORNER TYPE: GOVT. CORNER MEANDER RANCHO CONTROL OTHER
 CORNER IDENTIFICATION — DATE OF VISIT JUNE 26 1989



NORTH 1/4 CORNER, SECTION 32, T13S, R10E, M.D.M.

CORNER — LEFT AS FOUND FOUND AND TAGGED REESTABLISHED OBLITERATED CORNER REBUILT

PHYSICAL DESCRIPTION OF CORNER FOUND; EVIDENCE AND METHOD USED TO IDENTIFY OR REESTABLISH

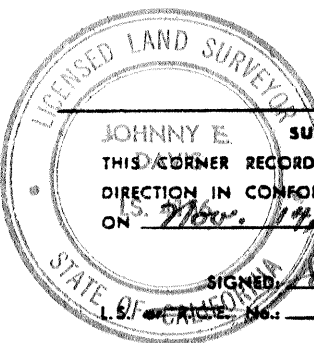
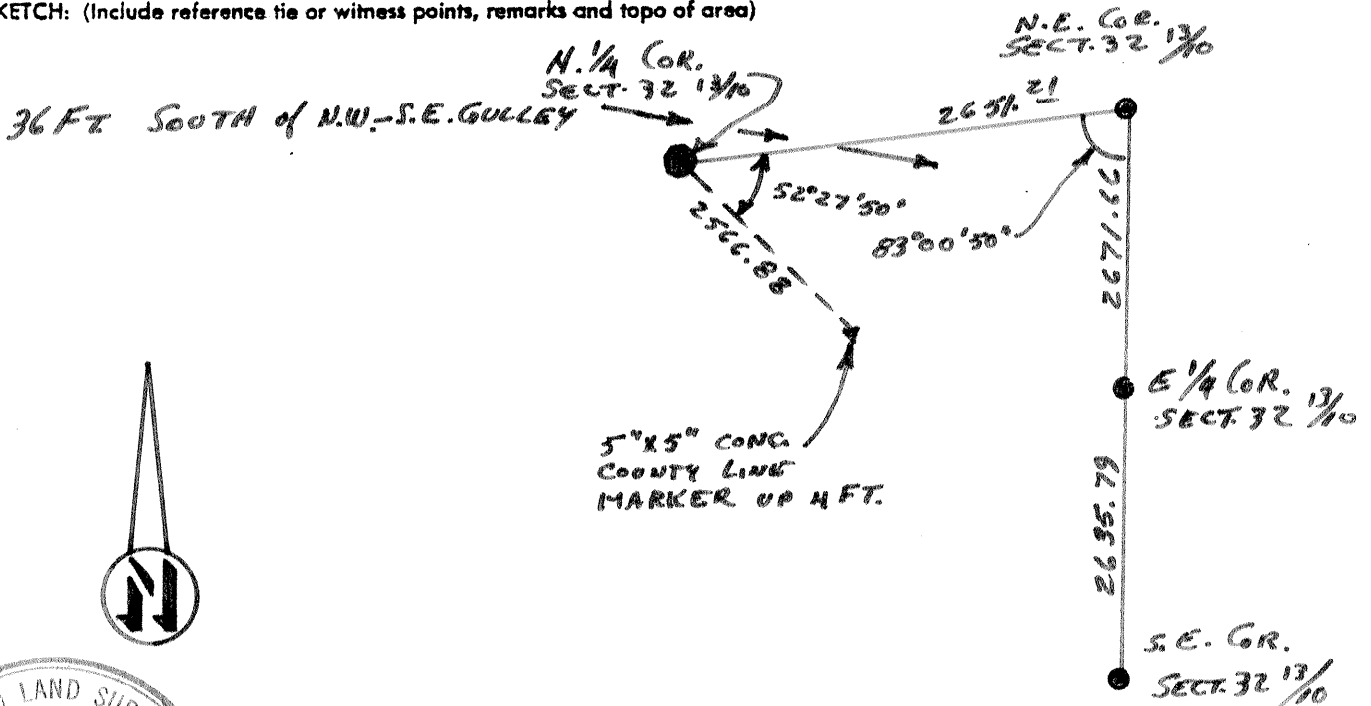
FOUND MOUND OF STONE WITH DECAYED REDWOOD IN THE CENTER.

PHYSICAL DESCRIPTION OF MONUMENTS REBUILT OR PERPETUATED

SET 1" O.D. X 28" GALVANIZED IRON PIPE, TAGGED L.S. 4156, IN THE CENTER OF THE DECAYED REDWOOD

CALIFORNIA COORDINATE SYSTEM ORDER: FIRST SECOND THIRD
 STATIONS USED: NGS (USC & GS) STATE COUNTY OTHER STATION _____ STATION _____
 ZONE _____ ELEVATION _____ NORTHINGS (Y) _____ EASTINGS (X) _____

SKETCH: (Include reference tie or witness points, remarks and topo of area)



SURVEYOR'S CERTIFICATE
 THIS CORNER RECORD WAS PREPARED BY ME OR UNDER MY DIRECTION IN CONFORMANCE WITH THE LAND SURVEYORS ACT ON June 14 1989
 SIGNED: Johnny E. Hoover
 L.S. No. 4156

SEAL

COUNTY SURVEYOR'S CERTIFICATE

THE CORNER RECORD WAS RECEIVED _____ 19_____
 AND EXAMINED AND FILED _____ 19_____
 BY: _____
 TITLE: _____
 DOCUMENT No. 1760A
 STATEMENT ON BACK OF SHEET YES NO