

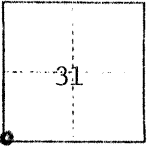
No 1685

CORNER RECORD

COUNTY OF Merced T. 9S R. 14E M.D.B. MERIDIAN CALIFORNIA

CORNER TYPE: GOV'T. CORNER  MEANDER  RANCHO  CONTROL  OTHER

CORNER IDENTIFICATION — DATE OF VISIT 6-2 1975



*No 1685*

CORNER — LEFT AS FOUND  FOUND AND TAGGED  REESTABLISHED OBLITERATED CORNER  REBUILT

PHYSICAL DESCRIPTION OF CORNER FOUND; EVIDENCE AND METHOD USED TO IDENTIFY OR REESTABLISH

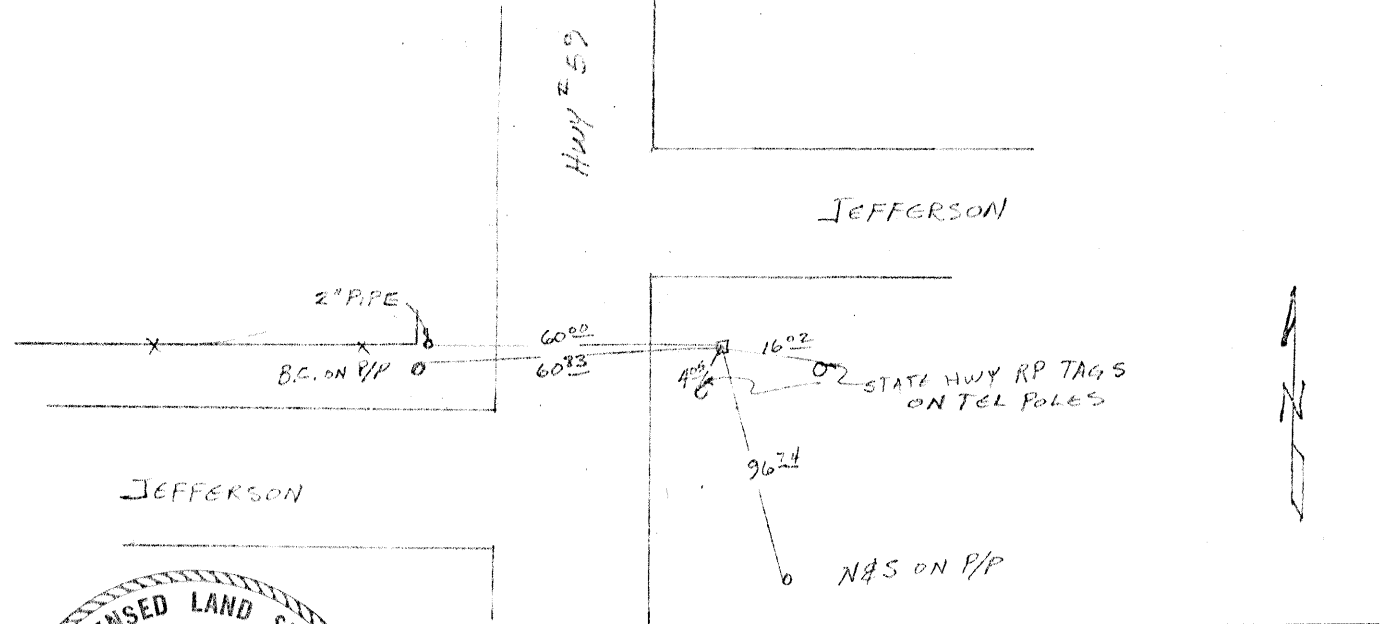
Bolt set in 6" x 6" conc. monument buried 0<sup>7</sup> on east line of State Hwy. 59 and south line of Jefferson east of hwy.

Corner located by PG&E survey but not verified.

PHYSICAL DESCRIPTION OF MONUMENTS REBUILT OR PERPETUATED

CALIFORNIA COORDINATE SYSTEM ORDER: FIRST  SECOND  THIRD   
STATIONS USED: NGS (USC & GS)  STATE  COUNTY  OTHER  STATION \_\_\_\_\_ STATION \_\_\_\_\_  
ZONE \_\_\_\_\_ ELEVATION \_\_\_\_\_ NORTHINGS (Y) \_\_\_\_\_ EASTINGS (X) \_\_\_\_\_

SKETCH: (include reference tie or witness points, remarks and topo of area)



SURVEYOR'S CERTIFICATE  
THIS CORNER RECORD WAS PREPARED BY ME OR UNDER MY Authorization \_\_\_\_\_

LICENSED LAND SURVEYOR  
STATE OF CALIFORNIA  
SIGNED: *[Signature]*  
L.S. No. LS 3413  
JULY 25 1975

COUNTY SURVEYOR'S CERTIFICATE  
THE CORNER RECORD WAS RECEIVED \_\_\_\_\_ 19\_\_\_\_\_  
AND EXAMINED AND FILED \_\_\_\_\_ 19\_\_\_\_\_  
BY: \_\_\_\_\_  
TITLE: \_\_\_\_\_  
DOCUMENT No. 1685  
STATEMENT ON BACK OF SHEET YES  NO