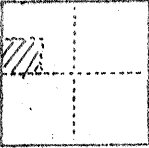


CORNER RECORD

Ray Turner

COUNTY OF MERCED T. 6S R. 10E SEC. 23 MERIDIAN M.D.M CALIFORNIA
 CORNER TYPE: GOVT. CORNER MEANDER RANCHO CONTROL OTHER PROPERTY CORNERS FOR
 CORNER IDENTIFICATION — DATE OF VISIT JAN. 15 1986

LOTS 14 AND 15 OF BLOCK
 42 OF IRWIN CITY MAP
 VOL. 3. O.P. PG. 36



LOTS WITHIN SW 1/4 OF NW 1/4

CORNER — LEFT AS FOUND FOUND AND TAGGED REESTABLISHED OBLITERATED CORNER REBUILT

PHYSICAL DESCRIPTION OF CORNER FOUND; EVIDENCE AND METHOD USED TO IDENTIFY OR REESTABLISH

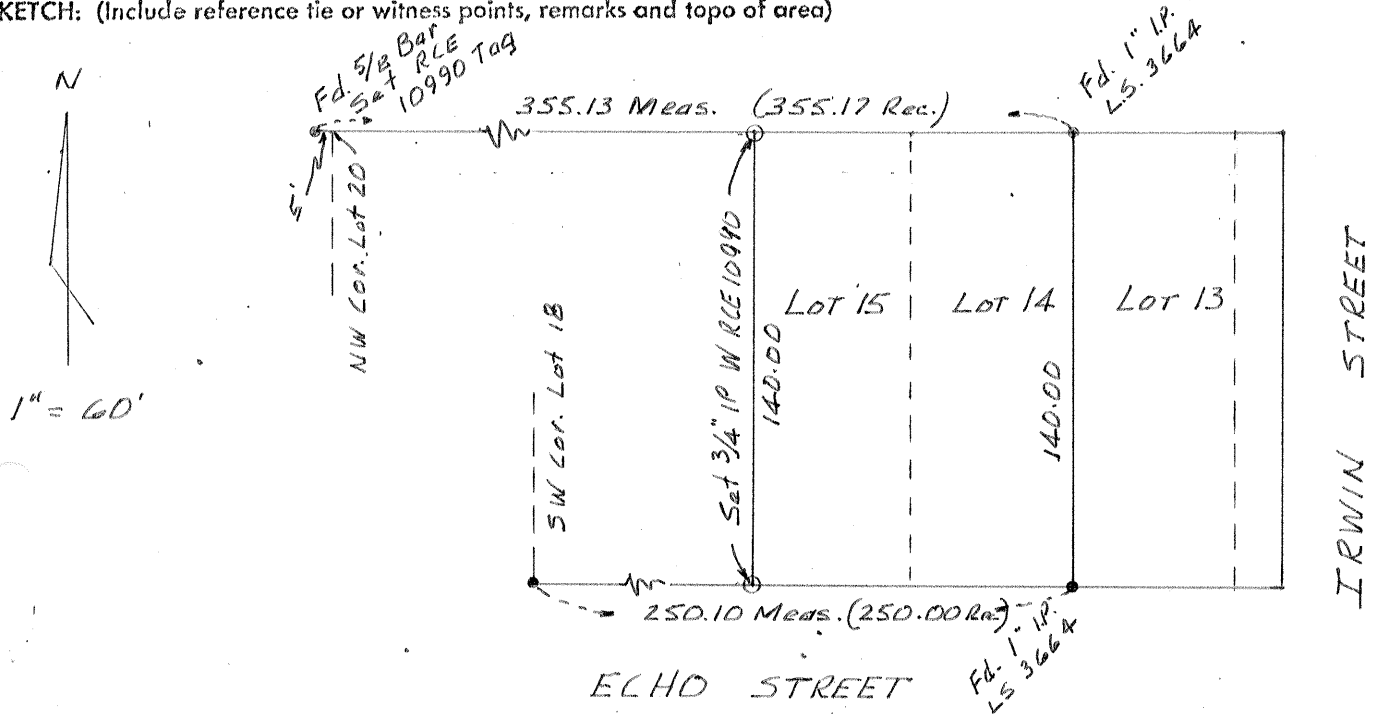
SET LOT CORNERS AS SHOWN

PHYSICAL DESCRIPTION OF MONUMENTS REBUILT OR PERPETUATED

CALIFORNIA COORDINATE SYSTEM ORDER: FIRST SECOND THIRD
 STATIONS USED: NG'S (USC & GS) STATE COUNTY OTHER STATION _____ STATION _____
 ZONE _____ ELEVATION _____ NORTHINGS (Y) _____ EASTINGS (X) _____

(Fold)

SKETCH: (Include reference tie or witness points, remarks and topo of area)

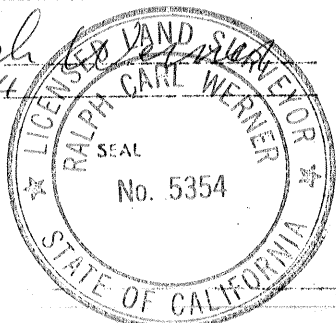


SURVEYOR'S CERTIFICATE

THIS CORNER RECORD WAS PREPARED BY ME OR UNDER MY DIRECTION IN CONFORMANCE WITH THE LAND SURVEYORS ACT
 On JAN. 29 1986

SIGNED: Ralph Carl Werner

L.S. or ~~REG.~~ No.: 5354



COUNTY SURVEYOR'S CERTIFICATE

THE CORNER RECORD WAS RECEIVED 1-30 1986
 AND EXAMINED AND FILED 2-3 1986

BY: Ray Turner

TITLE: Deputy Co. Surveyor

DOCUMENT No. 1668-6A

STATEMENT ON BACK OF SHEET

YES NO