

CORNER RECORD

COUNTY OF MERCED T. 5 R. 12 M.D.B. MERIDIAN CALIFORNIA
 CORNER TYPE: GOV'T. CORNER MEANDER RANCHO CONTROL OTHER
 CORNER IDENTIFICATION — DATE OF VISIT DEC. 5 1984



NORTHEAST COR., SEC. 30, T. 5S., R. 12E.

CORNER — LEFT AS FOUND FOUND AND TAGGED REESTABLISHED OBLITERATED CORNER REBUILT

PHYSICAL DESCRIPTION OF CORNER FOUND; EVIDENCE AND METHOD USED TO IDENTIFY OR REESTABLISH

3" x 4" REDWOOD STAKE, DOWN 0.2'

PHYSICAL DESCRIPTION OF MONUMENTS REBUILT OR PERPETUATED

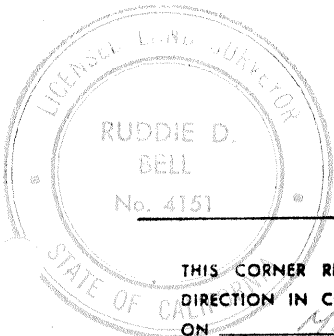
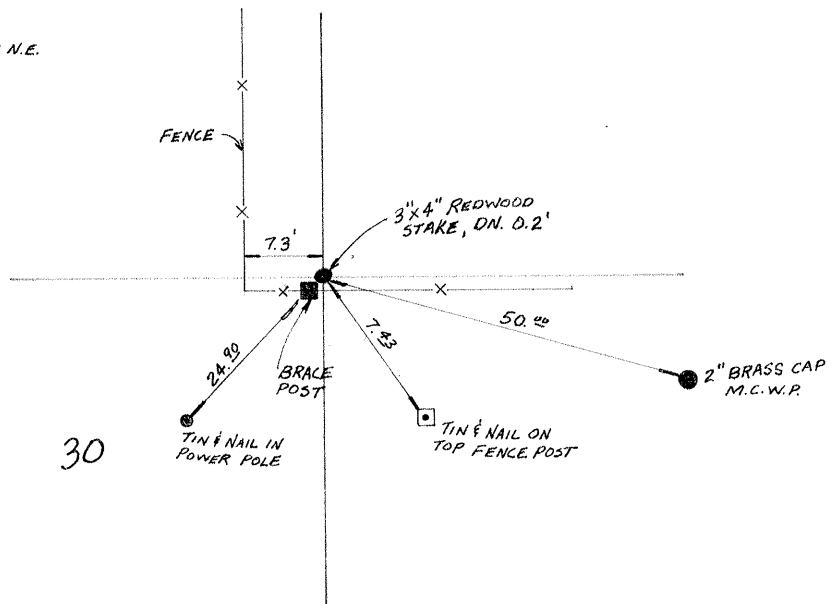
SAME AS ABOVE

CALIFORNIA COORDINATE SYSTEM ORDER: FIRST SECOND THIRD
 STATIONS USED: NGS (USC & GS) STATE COUNTY OTHER STATION _____ STATION _____
 ZONE _____ ELEVATION _____ NORTHINGS (Y) _____ EASTINGS (X) _____

SKETCH: (Include reference tie or witness points, remarks and topo of area)

NORTHSIDE FENCE 7.3' EAST FENCE, NORTH ON N.E.
 CORNER BRACE POST
 7.43' EAST O TOP OF CORNER POST
 45.72' N.W. O TOP OF CORNER POST
 50.00' N.W. 2" BRASS CAP, M.C.W.P.
 24.90' N.E. O P.P.

NORTH
 No SCALE



SURVEYOR'S CERTIFICATE

THIS CORNER RECORD WAS PREPARED BY ME OR UNDER MY DIRECTION IN CONFORMANCE WITH THE LAND SURVEYORS ACT ON MAR 26 1985

SIGNED: Ruddie D Bell
 L.S. or R.C.E. No.: LS 4151

SEAL

COUNTY SURVEYOR'S CERTIFICATE

THE CORNER RECORD WAS RECEIVED March 27 1985
 AND EXAMINED AND FILED April 8 1985
 BY: Roy Turner
 TITLE: Dep. Co. Sur.

DOCUMENT No. 1659

STATEMENT ON BACK OF SHEET

YES NO