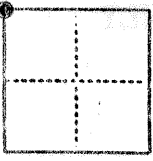


E 1594

CORNER RECORD

COUNTY OF MERCED T. 8 S. R. 13 E MDB & M MERIDIAN CALIFORNIA
 CORNER TYPE: GOVT. CORNER MEANDER RANCHO CONTROL OTHER
 CORNER IDENTIFICATION — DATE OF VISIT APRIL 06 1984



N.W. COR SEC 8

CORNER — LEFT AS FOUND FOUND AND TAGGED REESTABLISHED OBLITERATED CORNER REBUILT

PHYSICAL DESCRIPTION OF CORNER FOUND; EVIDENCE AND METHOD USED TO IDENTIFY OR REESTABLISH

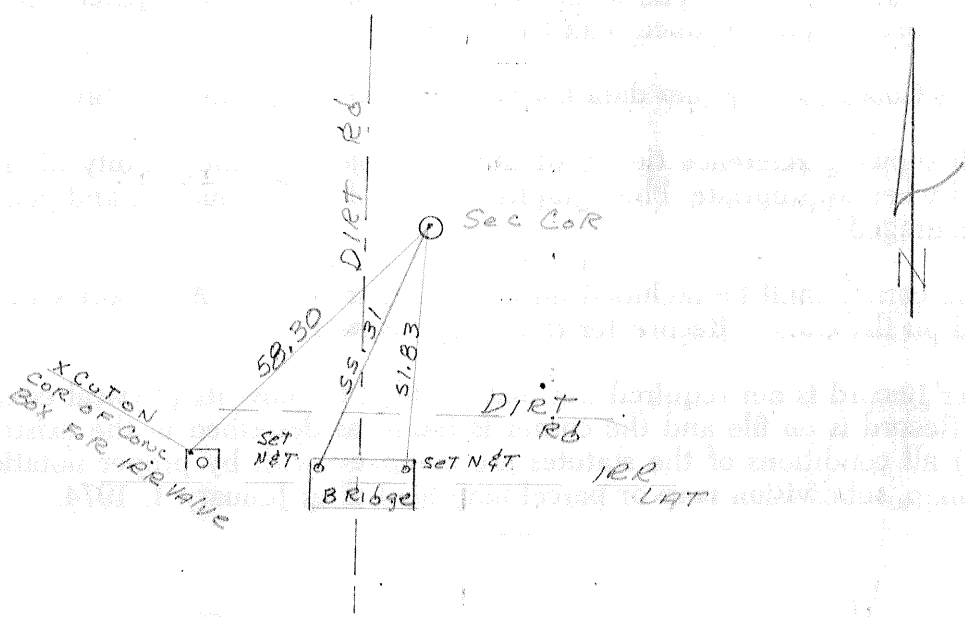
Fd CONC. MON. DOWN 1.5'
 SHOWN ON PARCEL MAP FOR JOHN QUINN
 MERCED COUNTY Vol 1 Page 33

PHYSICAL DESCRIPTION OF MONUMENTS REBUILT OR PERPETUATED

CALIFORNIA COORDINATE SYSTEM ORDER: FIRST SECOND THIRD
 STATIONS USED: NGS (USC & GS) STATE COUNTY OTHER STATION _____ STATION _____
 ZONE _____ ELEVATION _____ NORTHINGS (Y) _____ EASTINGS (X) _____

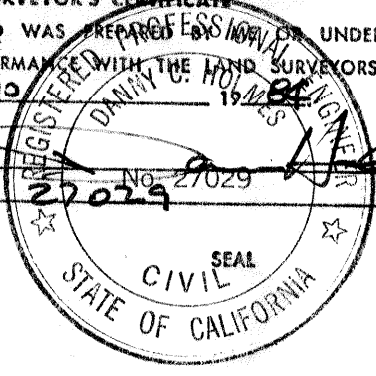
(Fold)

SKETCH: (Include reference tie or witness points, remarks and topo of area)



SURVEYOR'S CERTIFICATE

THIS CORNER RECORD WAS PREPARED BY DANNY U. HOVING UNDER MY
 DIRECTION IN CONFORMANCE WITH THE LAND SURVEYORS ACT
 ON APRIL 10 1984
 SIGNED: [Signature]
 S. or R.C.E. No. 27029



COUNTY SURVEYOR'S CERTIFICATE

THE CORNER RECORD WAS RECEIVED April 25 1984
 AND EXAMINED AND FILED 12 JULY 1984
 BY: [Signature]
 TITLE: County Surveyor
 DOCUMENT No. 1594

STATEMENT ON BACK OF SHEET YES NO