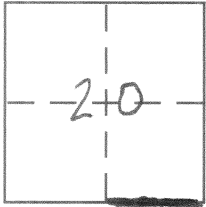


CORNER RECORD

Document Number 1590-C

City of _____ County of MERCED, California

Brief Legal Description S. LINE OF THE SE 1/4 SECTION 20 8/13 M.D.B.M



8/13

CORNER TYPE

Government Corner Control
Meander Property
Rancho Other
Date of Survey 9-26-11

COORDINATES (Optional)

N. _____
E. _____
Zone _____ NAD27 NAD83
NAD83 Epoch _____
Elev. _____
Vert. Datum: NGVD29 NAVD88
Meas. Units: Metric Imperial

Corner - Left as found Found and tagged Established Reestablished Rebuilt

Identification and type of corner found: Evidence used to identify or procedure used to establish or reestablish the corner:

SEE SKETCH

A description of the physical condition of the monument as found and as set or reset: _____

SEE SKETCH

SURVEYOR'S STATEMENT

This Corner Record was prepared by me or under my direction in conformance with the Land Surveyor's Act on OCTOBER 18 2011

Signed Michael S. Morris P.L.S or P.C.E. No. 8665



COUNTY SURVEYOR'S STATEMENT

This Corner Record was received October 20, 2011

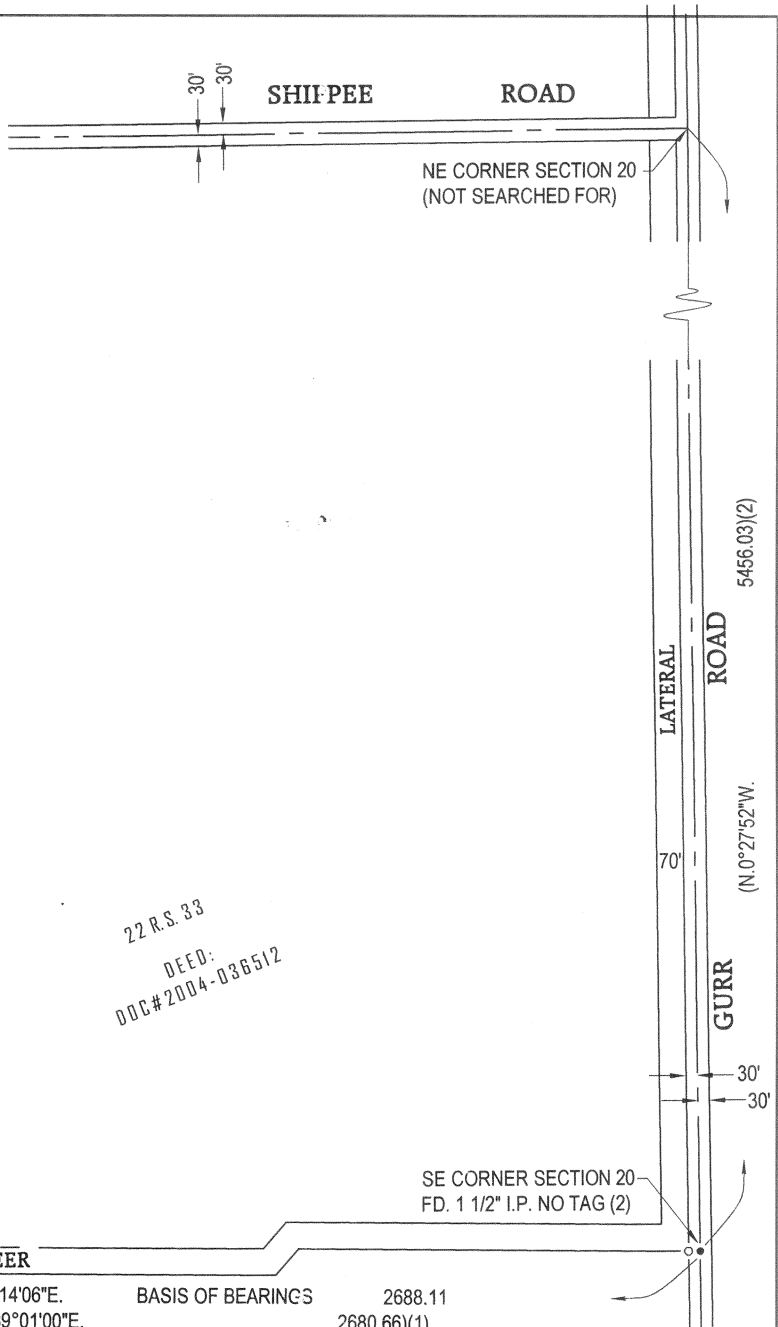
and examined and filed October 21, 2011

Signed J. Steven Reichmuth P.L.S or P.C.E. No. 4895

Title Deputy County Surveyor



County Surveyor's Comment _____



LEGEND

- FOUND AND ACCEPTED MONUMENT AS INDICATED
- SET 3/4" IRON PIPE, L.S. 8665

BASIS OF BEARINGS:

S.89°14'06"E. FOR THE SOUTH LINE OF SECTION 20 AS SHOWN ON THE RECORD OF SURVEY FOR WELLS FARGO BANK, 22 R.S. 33, M.C.R.

REFERENCE:

1. SURVEY FOR OTTO GRIBSI COUNTY SURVEYORS FILE 1-G-3.
2. RECORD OF SURVEY FOR WELLS FARGO BANK. 22 R.S. 33 M.C.R.

