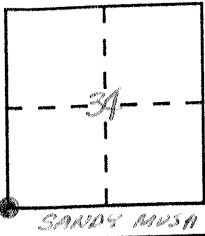


CORNER RECORD

Document Number 1582

City of _____ County of MERCED, California

Brief Legal Description SOUTHWEST CORNER SECTION 34 T. 8S., R. 13E.



CORNER TYPE

COORDINATES (Optional)

Government Corner Control
 Meander Property
 Rancho Other
 Date of Survey AUGUST 1997

N. _____
 E. _____
 Zone _____ Datum _____
 Elev. _____

Corner — Left as found Found and tagged Established Reestablished Rebuilt

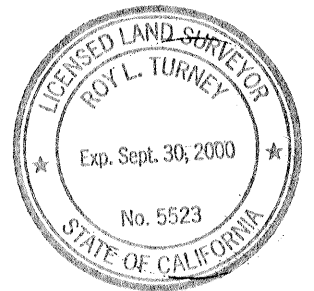
Identification and type of corner found: Evidence used to identify or procedure used to establish or reestablish the corner:
FD 1" I.P. WITH TAG MERCED COUNTY SURVEYOR (SEE REVERSE SIDE FOR SWING TIES) POINT TIED OUT AUGUST 1997 PRIOR TO A PAVING EFFORT BY MERCED COUNTY. MONUMENT WELL SET OVER 1" I.P.

A description of the physical condition of the monument as found and as set or reset: THESE TIES ARE FOR THE PURPOSE OF PERPETUATING THE FOUND MONUMENTATION NO CLAIM IS MADE AS TO THE RELATIONSHIP OF THE POINT OR LINE SHOWN HEREIN TO THE BOUNDARY LOCATIONS

SURVEYOR'S STATEMENT

This Corner Record was prepared by me or under my direction in conformance with the Land Surveyors' Act on 10-1 1997.

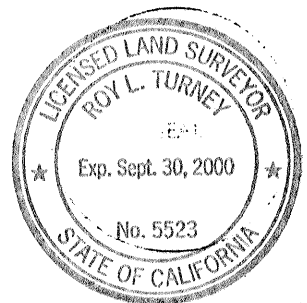
Signed Roy L. Turney L.S. or R.C.E. Number 5523



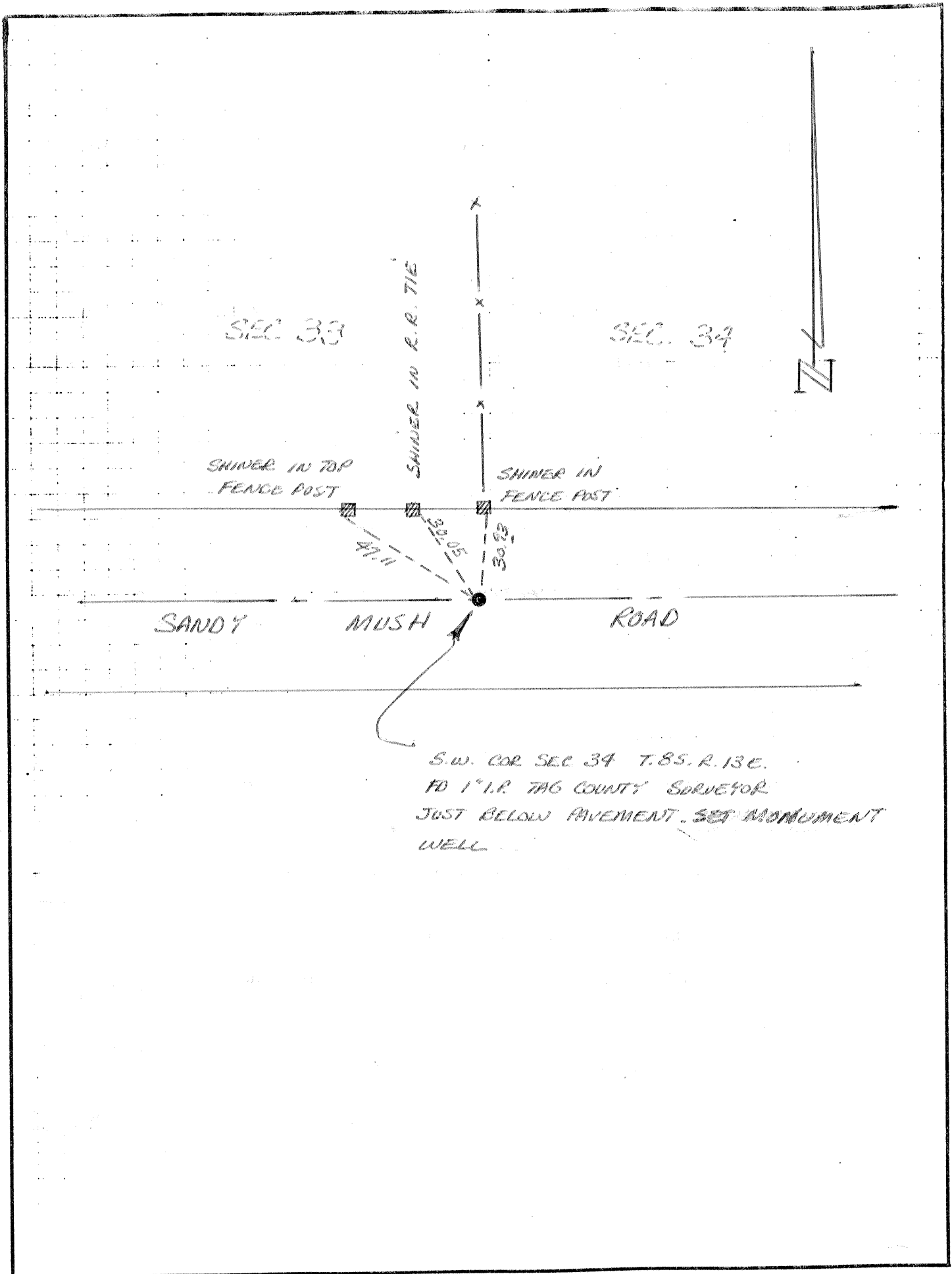
COUNTY SURVEYOR'S STATEMENT

This Corner Record was received 10-1 1997 and examined and filed 10-1 1997.

Signed Roy L. Turney Title DEP CO SUR



County Surveyor's Comment _____



S.W. COR SEC 34 T.85. R.13E.
 FD 1" I.P. TAG COUNTY SURVEYOR
 JUST BELOW PAVEMENT. SET MONUMENT
 WELL