

# CORNER RECORD

Agency Index 1576

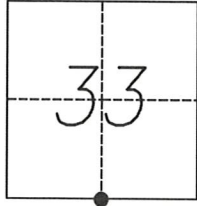
Document Number \_\_\_\_\_

City of \_\_\_\_\_ County of MERCED, California

Brief Legal Description SOUTH 1/4 COR. SECTION 33, T.8 S., R.13 E MOUNT DIABLO BASE AND MERIDIAN

### CORNER TYPE

### COORDINATES (Optional)



Government Corner  Control   
 Meander  Property   
 Rancho  Other

N. \_\_\_\_\_ E. \_\_\_\_\_  
 Elevation \_\_\_\_\_  
 Units Metric  U.S. Survey Foot   
 Horizontal Datum \_\_\_\_\_  
 Zone \_\_\_\_\_ Epoch Date \_\_\_\_\_  
 Vertical Datum \_\_\_\_\_

Date of Survey SEPTEMBER 10, 2019

Complies with Public Resources Code §§8801-8819  
 Complies with Public Resources Code §§8890-8902

PLS Act Ref.:  8765(d)  8771  8773  Other:  
 Corner/Monument:  Left as found  Established  Rebuilt  Pre-Construction  
 Found and tagged  Reestablished  Referenced  Post-Construction

Narrative of corner identified and monument as found, set, reset, replaced, or removed:  
 See sheet #2 for description(s):

*MONUMENT MAY BE DISTURBED DUE TO CONSTRUCTION*

### SURVEYOR'S STATEMENT

This Corner Record was prepared by me or under my direction in conformance with  
 the Professional Land Surveyors' Act on 6 Nov 2019  
 Signed [Signature] P.L.S. or R.C.E. No. 9417



### COUNTY SURVEYOR'S STATEMENT

This Corner Record was received DECEMBER 23, 2019  
 and examined and filed JANUARY 6, 2020  
 Signed Zachary T. Janz P.L.S. or R.C.E. No. 8664  
 Title COUNTY SURVEYOR



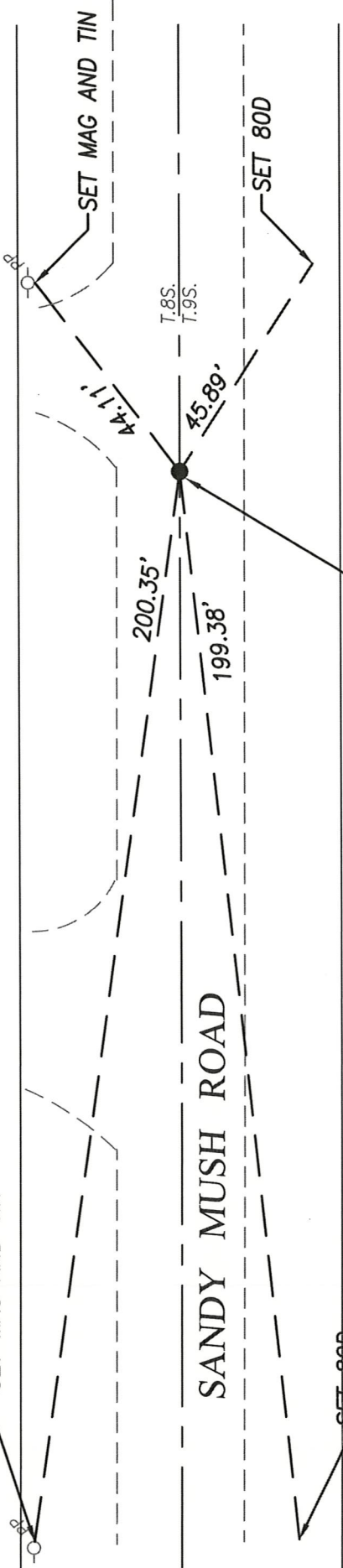
County Surveyor's Comment



SCALE: 1" = 30'

PORTION  
WEST 3/4  
SECTION 33  
T8S, R13E

SET MAG AND TIN



SANDY MUSH ROAD

SET 800

SOUTH 1/4 CORNER SECTION 33.  
FOUND 5/8 BAR, SHOWN AS  
3/4" IRON PIPE WITH L.S. 4151 ON  
22-RS-34. FITS S.E. & S.W. SEC. COR.

PARCEL 1  
64-PM-40