

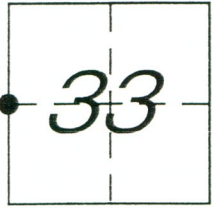
CORNER RECORD

Document Number 1573

City of _____

County of MERCED, California

Brief Legal Description WEST QUARTER CORNER OF SECTION 33, T.8 S., R.13 E., M.D.B.& M.



8/13

CORNER TYPE

Government Corner Control
Meander Property
Rancho Other
Date of Survey MARCH 18, 2013

COORDINATES (Optional)

N. _____
E. _____
Zone _____ NAD27 NAD83
NAD83 Epoch _____
Elev. _____
Vert. Datum: NGVD29 NAVD88
Meas. Units: Metric Imperial

Corner - Left as found Found and tagged Established Reestablished Rebuilt

Identification and type of corner found: Evidence used to identify or procedure used to establish or reestablish the corner:

FOUND 1/2" SQUARE ROD 1.5' DOWN. 1/2" ROD WAS FOUND PER 22 R.S. 34 AND 36 R.S. 26.
MONUMENT TIED OUT PRIOR TO OVERLAY OF GURR ROAD.

A description of the physical condition of the monument as found and as set or reset: SEE PAGE 2

SURVEYOR'S STATEMENT

This Corner Record was prepared by me or under my direction in conformance with the Land Surveyor's Act on May 5, 2016

Signed [Signature] P.L.S or R.C.E. No. 4895



COUNTY SURVEYOR'S STATEMENT

This Corner Record was received May 5, 2016

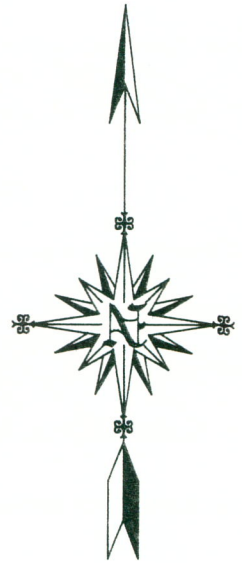
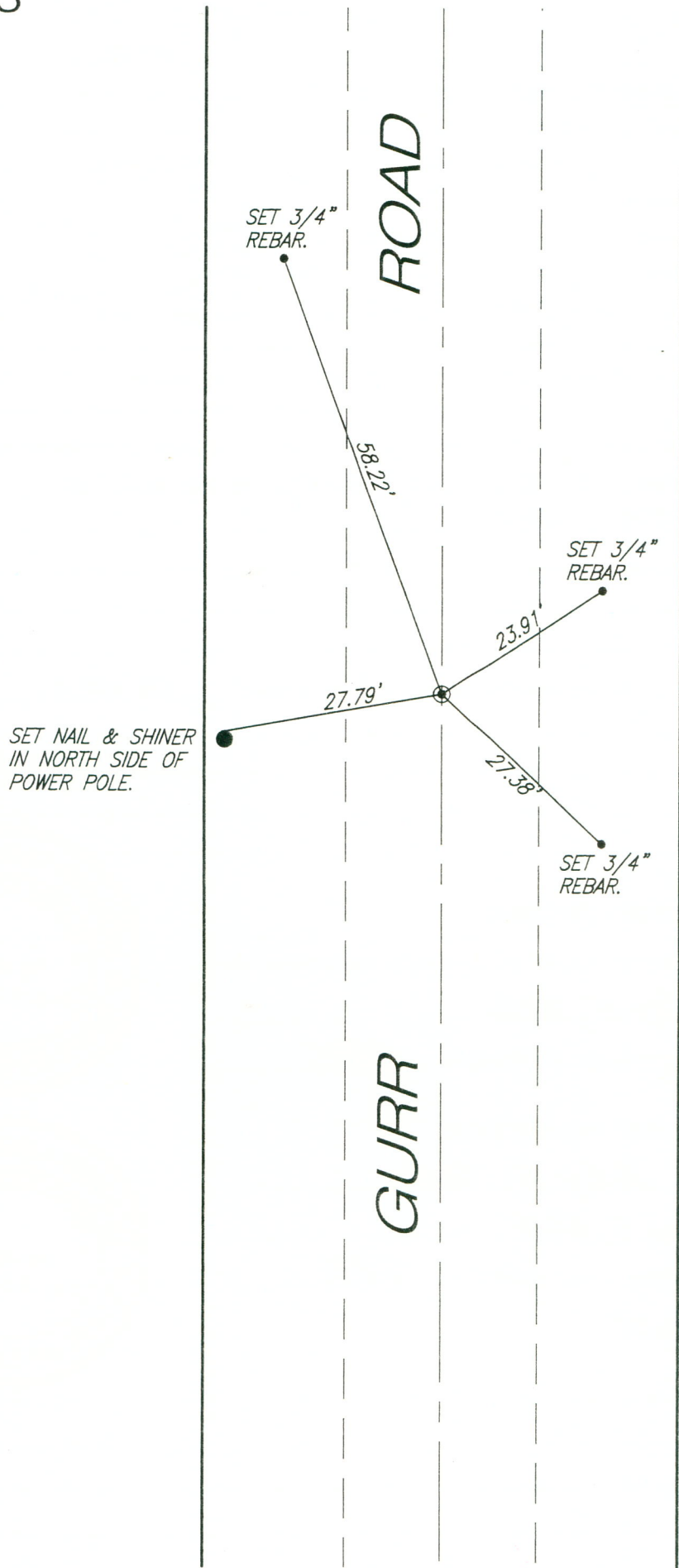
and examined and filed May 5, 2016

Signed [Signature] P.L.S or R.C.E. No. 4895

Title County Surveyor



County Surveyor's Comment _____



SCALE: 1" = 20'