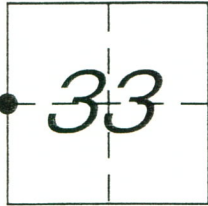


**CORNER RECORD**

Document Number 1573{2}

City of \_\_\_\_\_ County of MERCED, California

Brief Legal Description WEST QUARTER CORNER OF SECTION 33, T.8 S., R.13 E., M.D.B.& M.



8  
/ 13

**CORNER TYPE**

Government Corner  Control   
Meander  Property   
Rancho  Other   
Date of Survey MAY 4, 2016

**COORDINATES (Optional)**

N. \_\_\_\_\_  
E. \_\_\_\_\_  
Zone \_\_\_\_\_ NAD27  NAD83   
NAD83 Epoch \_\_\_\_\_  
Elev. \_\_\_\_\_  
Vert. Datum: NGVD29  NAVD88   
Meas. Units: Metric  Imperial

Corner - Left as found  Found and tagged  Established  Reestablished  Rebuilt

Identification and type of corner found: Evidence used to identify or procedure used to establish or reestablish the corner:  
FOUND 1/2" SQUARE ROD 1.8' DOWN. TIES FROM CORNER RECORD NO. 1573, DATED MARCH 18, 2013, WERE USED TO LOCATE MONUMENT. SET MONUMENT WELL AT PAVEMENT SURFACE.

A description of the physical condition of the monument as found and as set or reset: SEE PAGE 2

**SURVEYOR'S STATEMENT**

This Corner Record was prepared by me or under my direction in conformance with the Land Surveyor's Act on May 5, 2016  
Signed [Signature] P.L.S or R.C.E. No. 4895

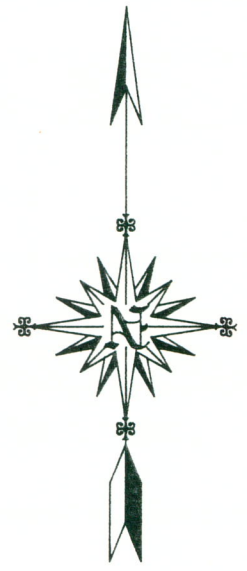
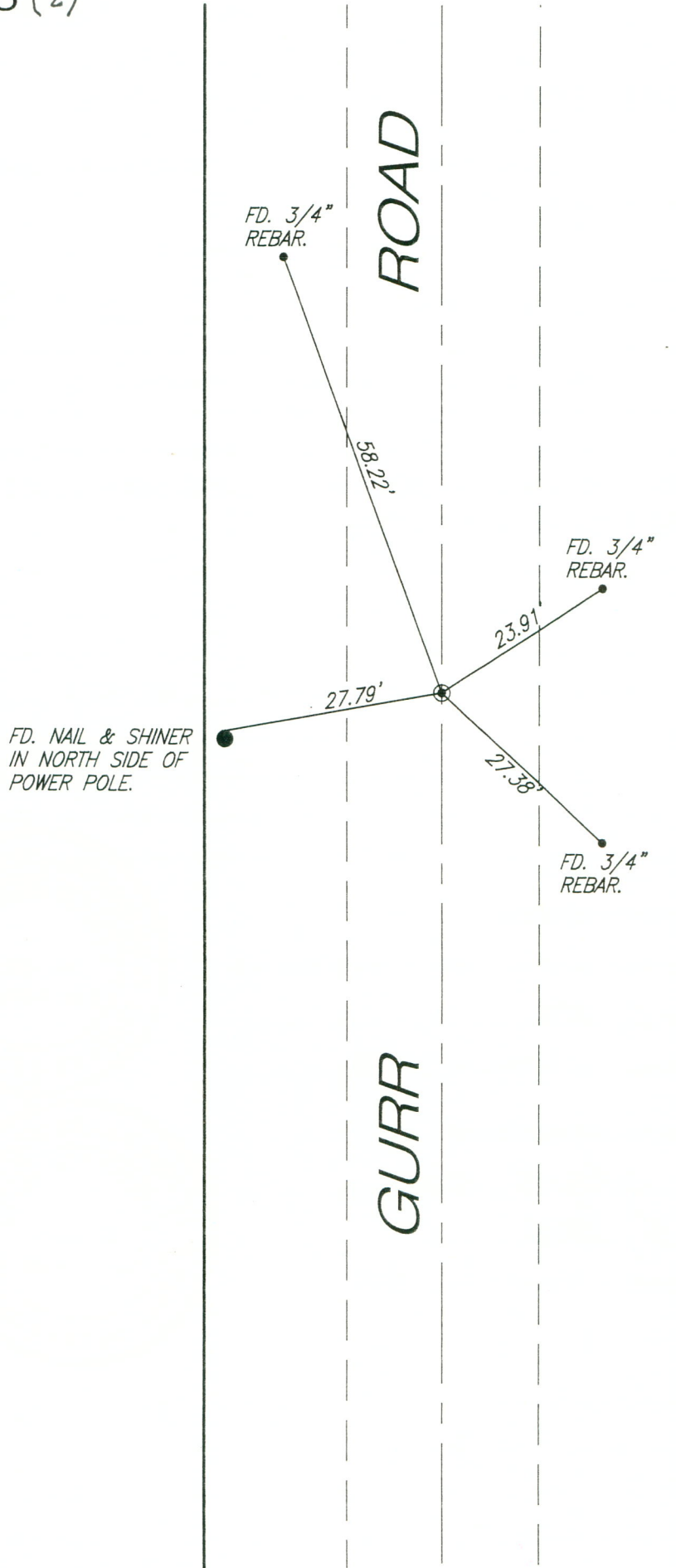


**COUNTY SURVEYOR'S STATEMENT**

This Corner Record was received May 5, 2016  
and examined and filed May 5, 2016  
Signed [Signature] P.L.S or R.C.E. No. 4895  
Title COUNTY SURVEYOR



County Surveyor's Comment \_\_\_\_\_



SCALE: 1" = 20'