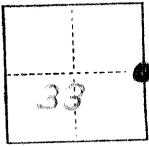


#1551

CORNER RECORD

JNTY OF Merced T. 6S R. 11E MDPS MERIDIAN CALIFORNIA

CORNER TYPE: GOV'T. CORNER MEANDER RANCHO CONTROL OTHER
CORNER IDENTIFICATION — DATE OF VISIT Sept. 1, 1978



CORNER — LEFT AS FOUND FOUND AND TAGGED REESTABLISHED OBLITERATED CORNER REBUILT

PHYSICAL DESCRIPTION OF CORNER FOUND; EVIDENCE AND METHOD USED TO IDENTIFY OR REESTABLISH

Found 1" Iron pin, 0⁹/₁₆ below surface of pavement at the intersection of Washington Blvd. and Magnolia Ave.
U.S.G.S. map Stevinson quad. 7.5 min.

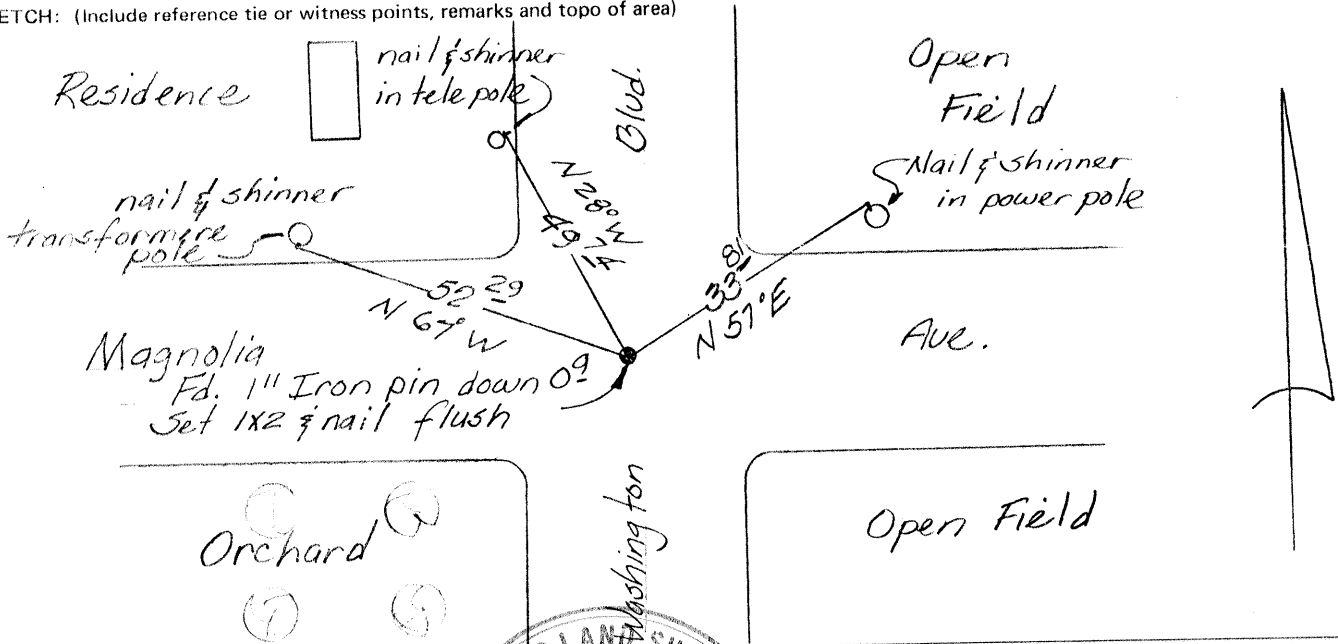
PHYSICAL DESCRIPTION OF MONUMENTS REBUILT OR PERPETUATED

Set 1 X 2 Hub and nail flush with pavement

PACIFIC GAS AND ELECTRIC CO.
LAND DEPT. JOB ED 2406

CALIFORNIA COORDINATE SYSTEM ORDER: FIRST SECOND THIRD
STATIONS USED: NGS (USC & GS) STATE COUNTY OTHER STATION _____ STATION _____
ZONE _____ ELEVATION _____ NORTHINGS (Y) _____ EASTINGS (X) _____

SKETCH: (Include reference tie or witness points, remarks and topo of area)



SURVEYOR'S CERTIFICATE

THIS CORNER RECORD WAS PREPARED BY ME OR UNDER MY DIRECTION IN CONFORMANCE WITH THE LAND SURVEYORS ACT ON September 27 1978 No. 3771

SIGNED: _____

L.S. or R.C.E. No.: _____

COUNTY SURVEYOR'S CERTIFICATE

THE CORNER RECORD WAS RECEIVED _____ 19____ AND EXAMINED AND FILED _____ 19____

BY: _____
TITLE: _____

DOCUMENT No. 1551

STATEMENT ON BACK OF SHEET

YES NO