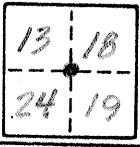


# CORNER RECORD

COUNTY OF Merced T. 7S R. 10E, R11E MDBA MERIDIAN CALIFORNIA  
 CORNER TYPE: GOVT. CORNER  MEANDER  RANCHO  CONTROL  OTHER   
 CORNER IDENTIFICATION — DATE OF VISIT Feb. 7 1991



CORNER — LEFT AS FOUND  FOUND AND TAGGED  REESTABLISHED OBLITERATED CORNER  REBUILT

PHYSICAL DESCRIPTION OF CORNER FOUND; EVIDENCE AND METHOD USED TO IDENTIFY OR REESTABLISH

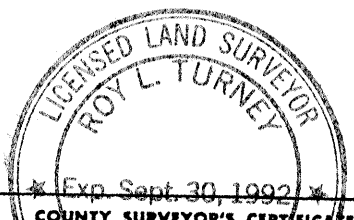
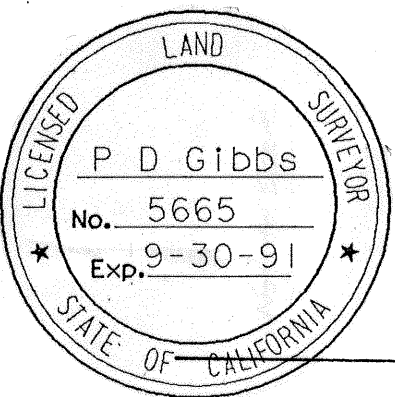
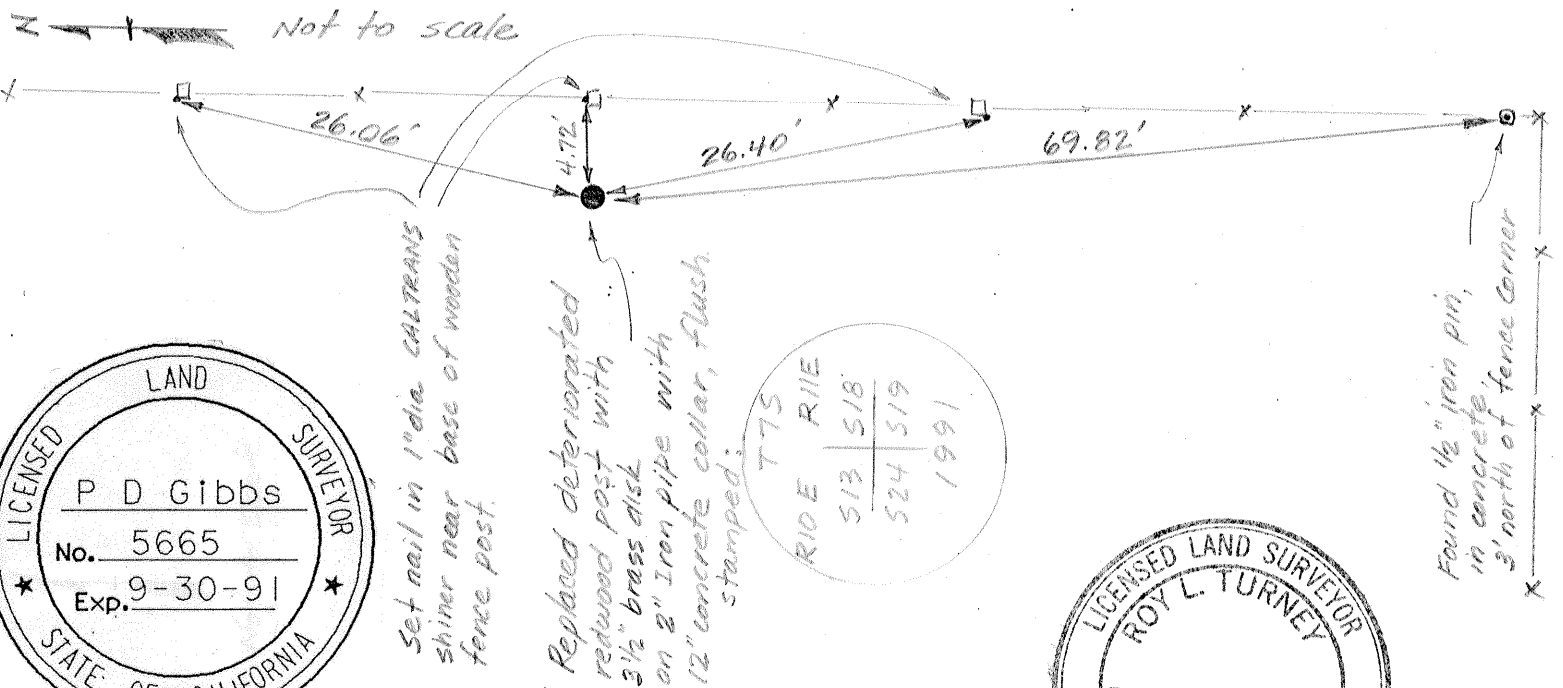
*Found deteriorated redwood post per Merced County Field Note #1550.*

PHYSICAL DESCRIPTION OF MONUMENTS REBUILT OR PERPETUATED

*3 1/2" diameter California Department of Transportation brass disk, on top of 2" diameter galvanized iron pipe with 12" diameter concrete collar, flush with the ground.*  
*Stamped: T7S, R10E, R11E, 513 | 518, 524 | 519, 1991*

CALIFORNIA COORDINATE SYSTEM ORDER: FIRST  SECOND  THIRD   
 STATIONS USED: NGS (USC & GS)  STATE  COUNTY  OTHER  STATION \_\_\_\_\_ STATION \_\_\_\_\_  
 ZONE \_\_\_\_\_ ELEVATION \_\_\_\_\_ NORTHINGS (Y) \_\_\_\_\_ EASTINGS (X) \_\_\_\_\_

SKETCH: (Include reference tie or witness points, remarks and topo of area)



**SURVEYOR'S CERTIFICATE**  
 THIS CORNER RECORD WAS PREPARED BY ME OR UNDER MY DIRECTION IN CONFORMANCE WITH THE LAND SURVEYORS ACT ON Feb. 7 1991

SIGNED: Patrick D. Gibbs  
 L.S. or R.C.E. No.: 5665

THE CORNER RECORD WAS RECEIVED AND EXAMINED AND FOUND Correct 1991  
 BY: Roy L. Turney  
 TITLE: County Surveyor

DOCUMENT No. 1550

STATEMENT ON BACK OF SHEET YES  NO